

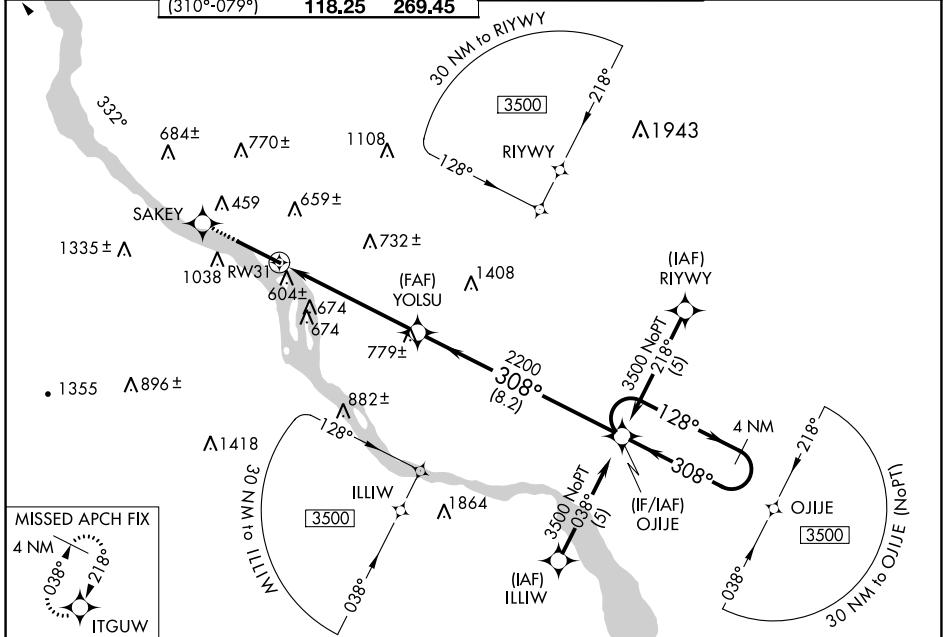
WAAS CH 78013 W31A	APP CRS 308°	Rwy Idg 8129 TDZE 308 Apt Elev 310
--	------------------------	---

RNAV (GPS) RWY 31

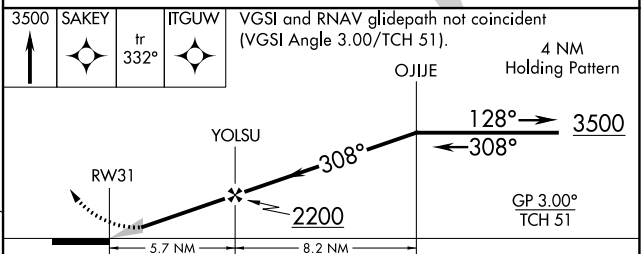
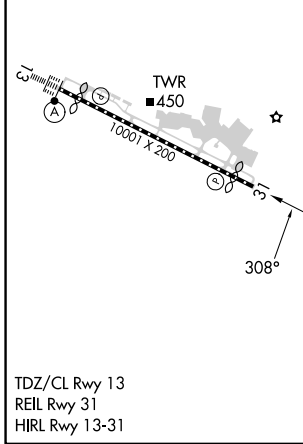
HARRISBURG INTL (MDT)

V Circling NA south of Rwy 13-31. For uncompensated Baro-VNAV systems, LNAV/VNAV NA below -15°C (5°F) or above 48°C (118°F).
A MISSED APPROACH: Climb to 3500 direct SAKEY and via track 332° to ITGUW and hold.
W -17°C
 DME/DME RNP-0.3 NA.

ATIS 118.8	HARRISBURG APP CON (080°-179°) 126.45 281.525 (180°-309°) 124.1 273.525 (310°-079°) 118.25 269.45	HARRISBURG INTL TOWER 124.8 269.35	GND CON 121.7 348.6
----------------------	---	--	-------------------------------



ELEV 310	D	TDZE 308
----------	----------	----------



CATEGORY	A	B	C	D
LPV DA		558/50	250 (300-1)	
LNAV/VNAV DA		921-2¼	613 (700-2¼)	
LNAV MDA	1100/50 792 (800-1)	1100/60 792 (800-1¼)	1100-2¼ 792 (800-2¼)	1100-2½ 792 (800-2½)
CIRCLING	1100-1 790 (800-1)	1100-1¼ 790 (800-1¼)	1100-2¼ 790 (800-2¼)	1440-3 1130 (1200-3)

NE-4, 23 MAR 2023 to 20 APR 2023

NE-4, 23 MAR 2023 to 20 APR 2023