

|  |                        |   |
|--|------------------------|---|
| WAAS<br>CH <b>93837</b><br><b>W19A</b> | APP CRS<br><b>186°</b> | Rwy Idg <b>5393</b><br>TDZE <b>1048</b><br>Apt Elev <b>1048</b> |
|--|------------------------|---|

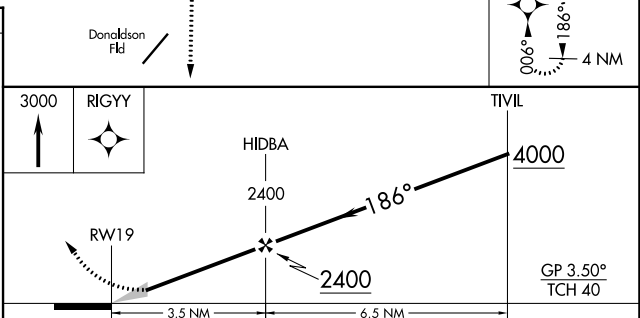
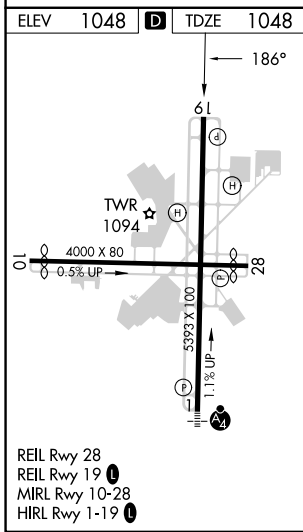
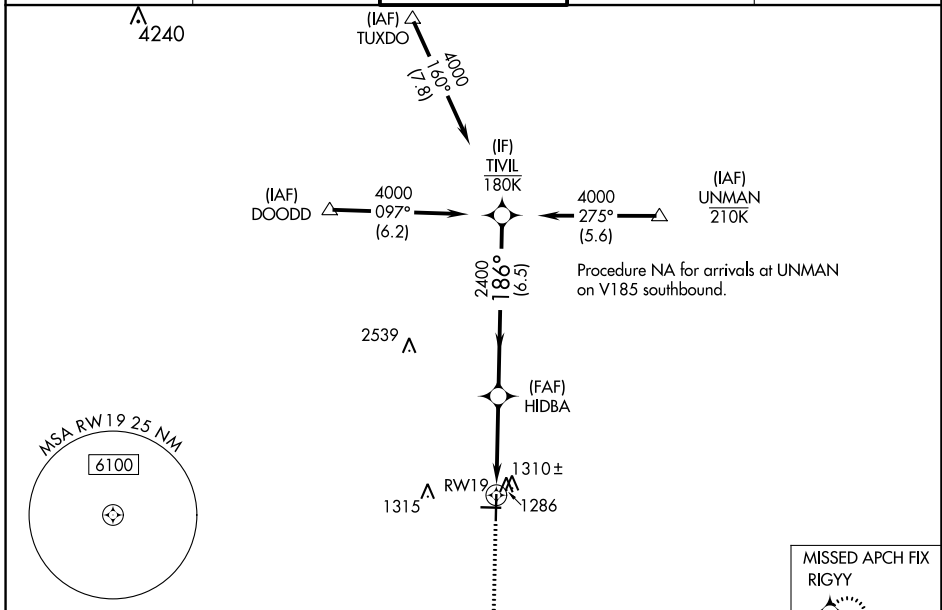
# RNAV (GPS) RWY 19

GREENVILLE DOWNTOWN (GMU)

**⚠** For uncompensated Baro-VNAV systems, LNAV/VNAV NA below -6°C (22°F) or above 54°C (130°F).  
**⚠** DME/DME RNP-0.3 NA. When local altimeter setting not received, use Greer altimeter setting and increase all DA 29 feet and all MDA 40 feet; increase LPV and LNAV/VNAV all Cats visibility 1/8 mile, increase LNAV Cats C/D and Circling Cat C visibility 1/4 mile.

MISSED APPROACH: Climb to 3000 direct RIGYY and hold.

|                          |   |  |                          |                         |
|--------------------------|---|--|--------------------------|-------------------------|
| ATIS ★<br><b>127.075</b> | GREER APP CON ★<br><b>118.8 270.275</b> | <b>GREENVILLE TOWER ★</b><br><b>119.9 (CTAF) 0 257.7</b> | GND CON<br><b>121.25</b> | UNICOM<br><b>122.95</b> |
|--------------------------|---|--|--------------------------|-------------------------|



| CATEGORY          | A       | B           | C                     | D                       |
|-------------------|---------|-------------|-----------------------|-------------------------|
| LPV DA            | 1373-1  |             | 325 (400-1)           | NA                      |
| LNAV/VNAV DA      | 1480-1¼ |             | 432 (500-1¼)          | NA                      |
| LNAV MDA          | 1560-1  | 512 (600-1) | 1560-1⅓               | 512 (600-1⅓)            |
| <b>C</b> CIRCLING | 1620-1  | 572 (600-1) | 1780-2<br>732 (800-2) | 1860-2¾<br>812 (900-2¾) |

SE-2, 23 MAR 2023 to 20 APR 2023

SE-2, 23 MAR 2023 to 20 APR 2023