

WAAS CH <b>72603</b> <b>W05A</b>	APP CRS <b>047°</b>	Rwy Idg TDZE Apt Elev	<b>8000</b> <b>956</b> <b>956</b>
----------------------------------------	------------------------	-----------------------------	-----------------------------------------

# RNAV (GPS) RWY 5

DONALDSON FLD (GYH)

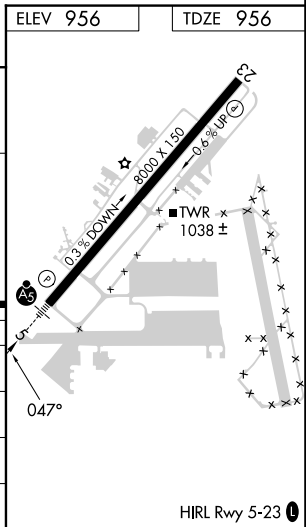
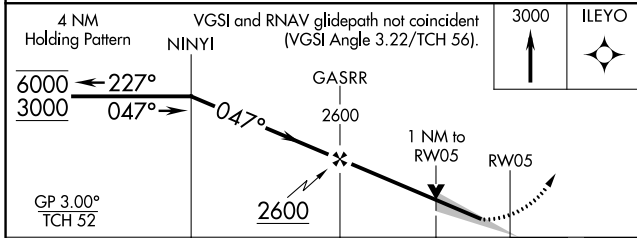
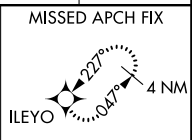
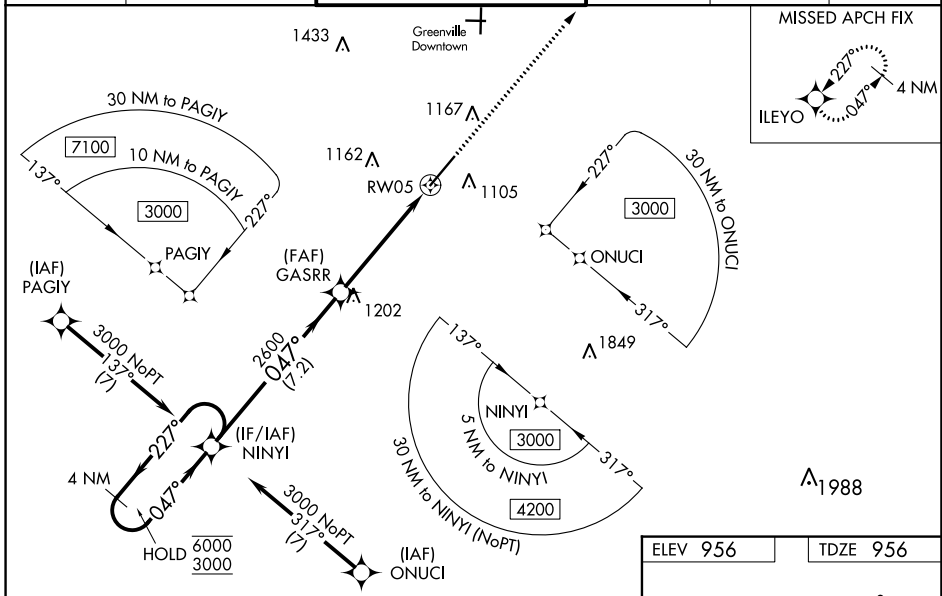
RNP APCH - GPS.

**⚠** Baro-VNAV and VDP NA when using Greer altimeter setting. For uncompensated Baro-VNAV systems, LNAV/VNAV NA below -16°C or above 54°C. When local altimeter setting not received, use Greer altimeter setting and increase LPV DA to 1185 feet; increase LNAV/VNAV DA to 1279; increase all MDAs 40 feet and LNAV visibility Cats C and D 1/2 SM. For inop ALS, increase LNAV/VNAV visibility all Cats to 3/4 SM and increase LNAV visibility Cats C/D to 1 1/2 SM.



MISSED APPROACH:  
Climb to 3000 direct ILEYO and hold.

AWOS-3 <b>127.325</b>	GREER APP CON ★ <b>118.8 270.275</b>	<b>DONALDSON TOWER ★</b> <b>133.325 (CTAF) 0 269.25</b>	GND CON <b>121.4</b>	CLNC DEL <b>121.4</b>	UNICOM <b>122.7</b>
--------------------------	-----------------------------------------	------------------------------------------------------------	-------------------------	--------------------------	------------------------



CATEGORY	A	B	C	D
LPV DA		1156-1/2	200 (200-1/2)	
LNAV/VNAV DA		1250-1/2	294 (300-1/2)	
LNAV MDA	1360-1/2	404 (500-1/2)	1360-3/4	404 (500-3/4)
CIRCLING	1420-1 464 (500-1)	1480-1 524 (600-1)	1480-1 1/2 524 (600-1 1/2)	1520-2 564 (600-2)

SE-2, 23 MAR 2023 to 20 APR 2023

SE-2, 23 MAR 2023 to 20 APR 2023