


WAAS CH <b>53610</b> <b>W05A</b>	APP CRS <b>052°</b>	Rwy Idg <b>10001</b> TDZE <b>900</b> Apt Elev <b>926</b>
----------------------------------------	------------------------	----------------------------------------------------------------

# RNAV (GPS) RWY 5R

PIEDMONT TRIAD INTL (GSO)

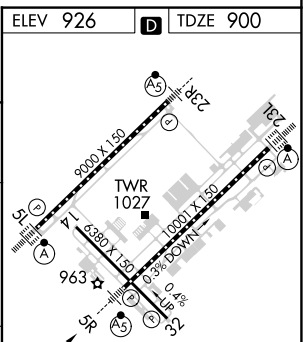
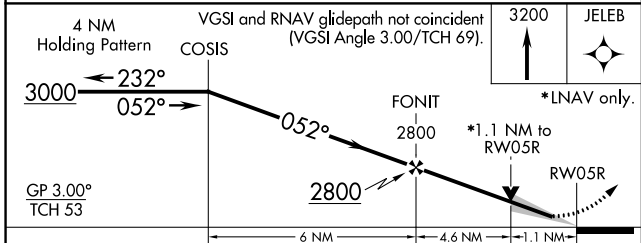
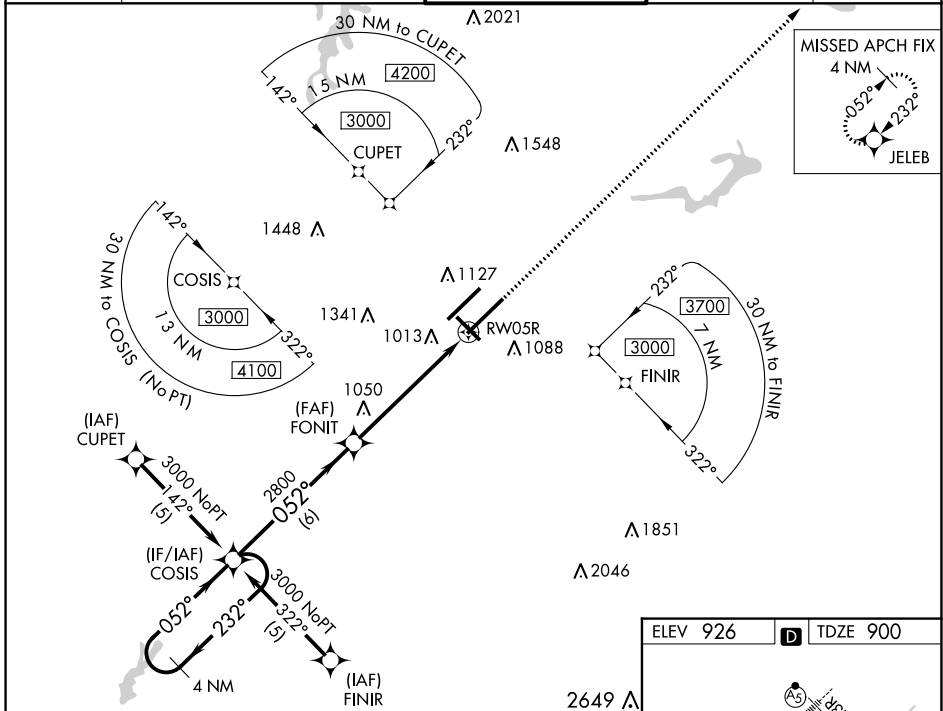
**▼** For inop MALS, increase LNAV Cat D visibility to RVR 6000. For uncompensated Baro-VNAV systems, LNAV/VNAV NA below -16°C (4°F) or above 47°C (116°F). DME/DME RNP-0.3 NA.  
**▲** Simultaneous approach authorized with ILS or LOC Rwy 5L, ILS Rwy 5L (CAT II), ILS Rwy 5L (CAT III). Use of FD or AP providing RNAV track guidance required during simultaneous operations. LNAV Procedure NA during simultaneous operations.  
 \*\*RVR 1800 authorized with use of FD or AP or HUD to DA.

MALS



MISSED APPROACH:  
Climb to 3200 direct JELEB and hold.

D-ATIS <b>128.55</b>	GREENSBORO APP CON <b>124.35 269.225</b> (250°-049°) <b>126.6 327.075</b> (050°-249°)	GREENSBORO TOWER <b>119.1 290.325</b>	GND CON <b>121.9 348.6</b>	CLNC DEL <b>121.75</b>
-------------------------	---------------------------------------------------------------------------------------------	------------------------------------------	-------------------------------	---------------------------



CATEGORY	A	B	C	D
LPV DA**	1100/24		200 (200-½)	
LNAV/VNAV DA	1321/50		421 (400-1)	
LNAV MDA	1320/24	420 (400-½)	1320/40 420 (400-¾)	1320/50 420 (400-1)
<b>C</b> CIRCLING	1440-1	514 (600-1)	1700-2¼ 774 (800-2¼)	1700-2½ 774 (800-2½)

TDZ/CL Rwy 5L, 23R and 23L  
REIL Rwy 32  
HIRL Rwy 14-32, 5R-23L and 5L-23R

SE-2, 23 MAR 2023 to 20 APR 2023

SE-2, 23 MAR 2023 to 20 APR 2023