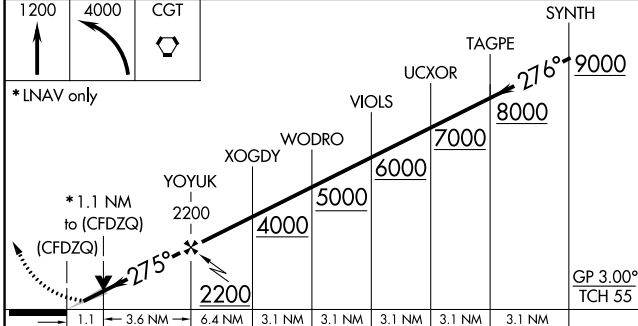
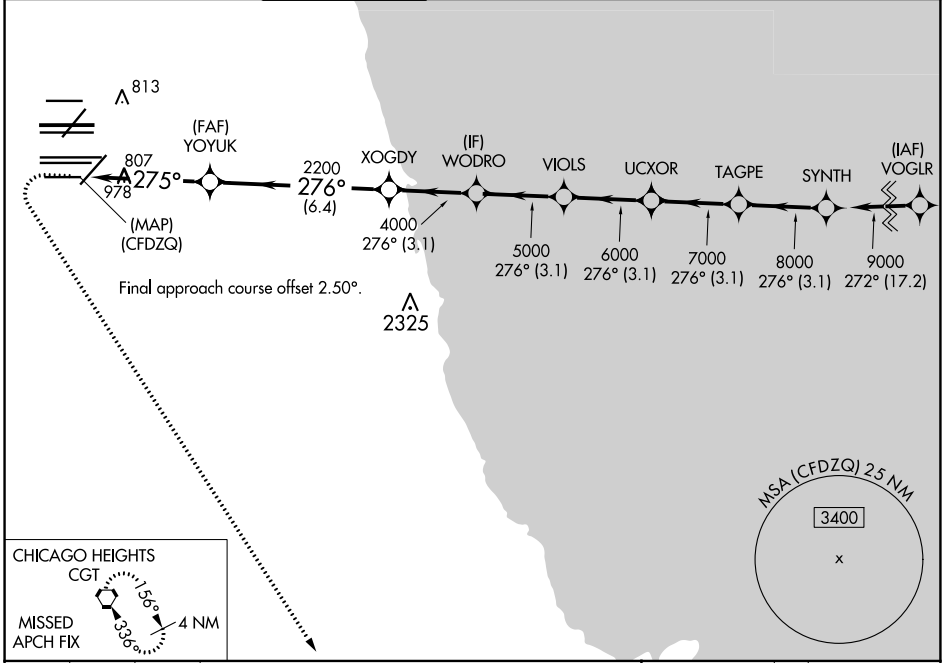


WAAS CH 93839 W28E	APP CRS 275°	Rwy Idg TDZE 667 Apt Elev 680
--	------------------------	---

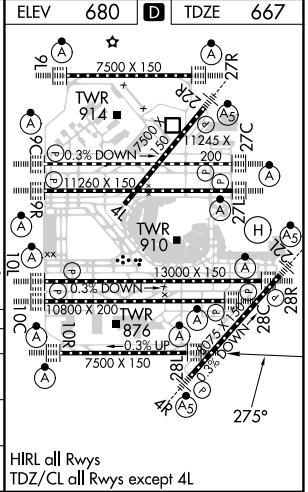
RNAV (GPS) Y RWY 28L

CHICAGO O'HARE INTL (ORD)

RNP APCH		ALSIF-2		MISSED APPROACH: Climb to 1200 then climbing left turn to 4000 direct CGT VORTAC and hold.	
<p>Simultaneous approach authorized. LNAV procedure NA during simultaneous operations. For uncompensated Baro-VNAV systems, LNAV/VNAV NA below -19°C or above 54°C. Use of FD or AP required during simultaneous operations.</p>		<p>Simultaneous approach authorized. LNAV procedure NA during simultaneous operations. For uncompensated Baro-VNAV systems, LNAV/VNAV NA below -19°C or above 54°C. Use of FD or AP required during simultaneous operations.</p>			
D-ATIS 135.4 282.225	CHICAGO APP CON 119.0 292.125	O'HARE TOWER 133.0 348.0	GND CON (TWR CENTER) 124.125 (TWR NORTH) 118.05 (TWR SOUTH) 226.675 (ALL TWRS)	CLNC DEL 121.9 (OBND) 121.6 (IBND)	CPDLC



1200	4000	CGT	SYNTH
↑	↷	⬡	
*LNAV only			
1.1	3.6 NM	6.4 NM	2200
2200	4000	5000	6000
7000	8000	9000	9000
GP 3.00°	TCH 55		
CATEGORY	A	B	C
LPV DA	917/24		250 (300-½)
LNAV/VNAV DA	1090/40		423 (500-¾)
LNAV MDA	1060/24	393 (400-½)	1060/35 393 (400-⅝)



EC-3, 23 MAR 2023 to 20 APR 2023

EC-3, 23 MAR 2023 to 20 APR 2023