

| | | |
|--|------------------------|--|
| WAAS CH 42634 W28B | APP CRS 273° | Rwy Idg 10800 TDZE 651 Apt Elev 680 |
|--|------------------------|--|

RNAV (GPS) RWY 28C

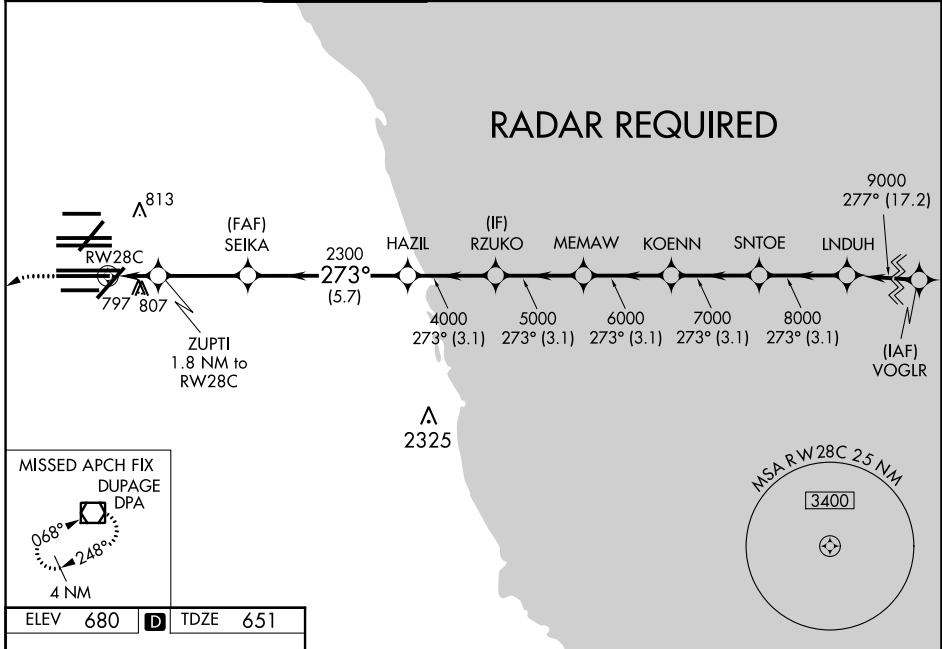
CHICAGO O'HARE INTL (ORD)

▼ DME/DME RNP-0.3 NA. Simultaneous approach authorized. For uncompensated Baro-VNAV systems, LNAV/VNAV NA below -19°C (-2°F) or above 54°C (130°F). LNAV procedure NA during simultaneous operations. Use of FD or AP providing RNAV track guidance required during simultaneous operations. For inop ALSF, increase LNAV Cat C and D visibility to RVR 6000.



MISSED APPROACH:
Climb to 1100 then
climbing left turn to
4000 direct DPA
VOR/DME and hold.

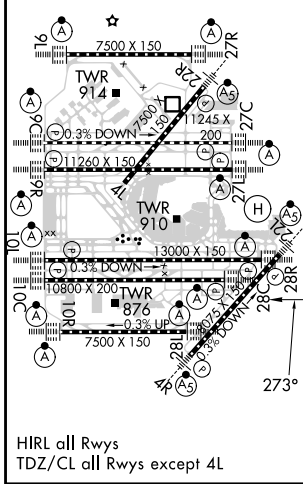
| | | | | | | | |
|--|--|-------------------------------------|--|---|---|--------------------------|-------|
| D-ATIS 135.4 282.225 | CHICAGO APP CON 119.0 292.125 | O'HARE TOWER 120.75 348.0 | 124.125 118.05 226.675 (ALL TWRS) | GND CON (TWR NORTH) 121.75 (TWR SOUTH) 121.9 (IBND) | (TWR CENTER) (OBND) 121.9 (IBND) | CLNC DEL 121.6 | CPDLC |
|--|--|-------------------------------------|--|---|---|--------------------------|-------|



EC-3, 23 MAR 2023 to 20 APR 2023

EC-3, 23 MAR 2023 to 20 APR 2023

| | | |
|-----------------|----------|-----------------|
| ELEV 680 | D | TDZE 651 |
|-----------------|----------|-----------------|



| | | | | | | | |
|-----------------------------|---------|-------|--|----------|-------------|-----------------------------|-------------|
| 1100 | 4000 | DPA | VGSi and RNAV glidepath not coincident (VGSi Angle 3.00/TCH 80). | | | | |
| *LNAV only. | | | | | | | |
| ZUPTI 1.8 NM to RW28C | SEIKA | HAZIL | RZUKO | MEMAW | KOENN | SNTOE LNDUH | |
| *1 NM to RW28C | 2300 | 4000 | 5000 | 6000 | 7000 | 8000 9000 | |
| RW28C | *1260 | 2300 | | | | GP 3.00° TCH 55 | |
| | ←1 NM→ | 0.8 | 3.2 NM | ←5.7 NM→ | 3.1 NM | 3.1 NM 3.1 NM 3.1 NM 3.1 NM | |
| CATEGORY | A | | B | | C | | D |
| LPV DA | | | 851/18 | | 200 (200-½) | | |
| LNAV/VNAV DA | | | 1094/50 | | 443 (500-1) | | |
| LNAV MDA | 1060/24 | | 409 (400-½) | | 1060/40 | | 409 (400-¾) |