

LOC/DME I-BYW <b>110.9</b> Chan 46	APP CRS <b>091°</b>	Rwy Idg 7500	TDZE 680	Apt Elev 680
--	------------------------	-----------------	-------------	-----------------

# ILS PRM Y RWY 10R (CLOSE PARALLEL)

CHICAGO O'HARE INTL (ORD)

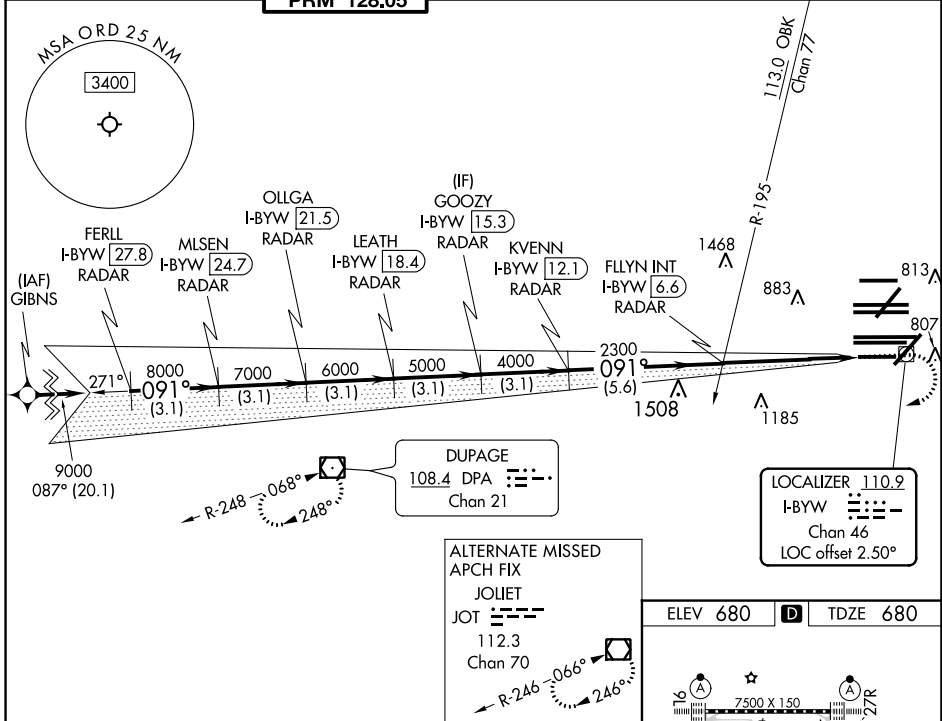
RNAV 1-GPS or RADAR required for procedure entry. DME or RADAR required.  
From GIBNS: RNAV-1 GPS required.

Simultaneous approach authorized. Use of FD or AP required during simultaneous operations. Dual VHF Comm required. See additional requirements on AAUP.



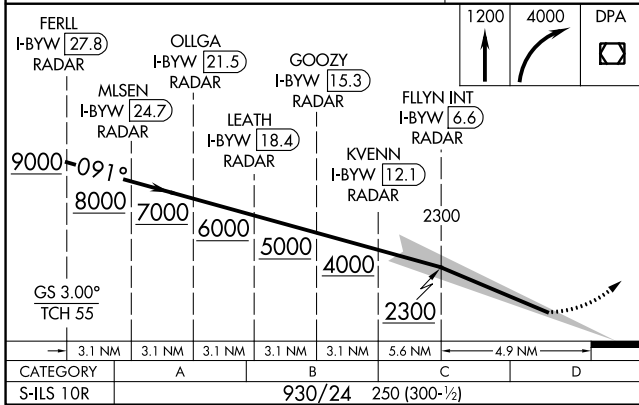
MISSED APPROACH: Climb to 1200 then climbing right turn to 4000 direct DPA VOR/DME and hold.

D-ATIS <b>135.4</b> 282.225	CHICAGO APP CON <b>119.0 292.125</b>	O'HARE TOWER <b>133.0 348.0</b> PRM <b>128.05</b>	GND CON (TWR NORTH) <b>124.125</b> (TWR SOUTH) <b>118.05</b> (ALL TWRS) <b>226.675</b>	(TWR CENTER) (OBND) <b>121.75</b> (IBND) <b>121.9</b>	CLNC DEL <b>121.6</b>	CPDLC
-----------------------------------	---	---	---	--	--------------------------	-------



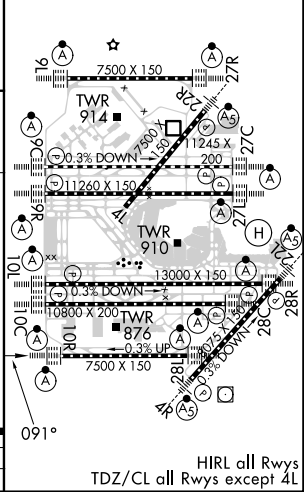
EC-3, 23 MAR 2023 to 20 APR 2023

EC-3, 23 MAR 2023 to 20 APR 2023



CATEGORY	A	B	C	D
S-ILS 10R		930/24	250 (300-1/2)	

ELEV 680	D	TDZE 680
----------	---	----------



HIRL all Rwys  
TDZ/CL all Rwys except 4L