

CHICAGO, ILLINOIS

AL-166 (FAA)

# ILS PRM RWY 10C (CAT II & III) (CLOSE PARALLEL)

CHICAGO O'HARE INTL (ORD)

LOC/DME I-SXH	APP CRS	Rwy Ldg	10540
108.95	093°	TDZE	669
Chan 26(Y)		Apt Elev	680

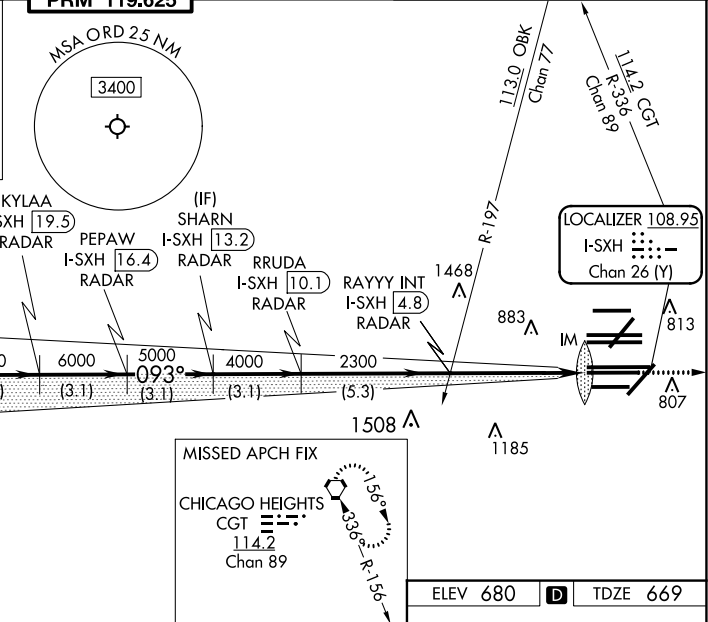
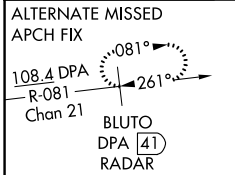
RNAV 1-GPS or RADAR required for procedure entry. DME or RADAR required.  
 From GIBNS: RNAV-1 GPS required.

▼ CAT II: RVR 1000 authorized with specific OPSPEC, MSPEC, or LOA approval and use of Autoland or HUD touchdown.  
 Simultaneous approach authorized. Use of FD or AP required during simultaneous operations. Dual VHF comm required. See additional requirements on AAUP.

ALSF-2

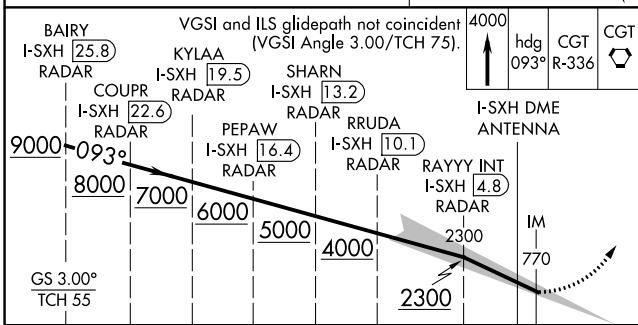
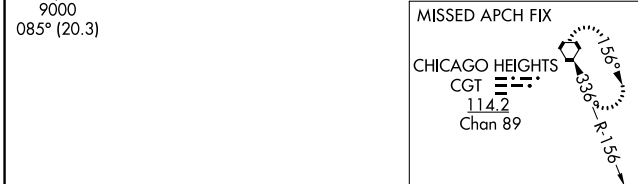
MISSED APPROACH: Climb to 4000 on heading 093° and CGT VORTAC R-336 to CGT VORTAC and hold.

D-ATIS	CHICAGO APP CON	O'HARE TOWER	GND CON (TWR CENTER)	CLNC DEL	CPDLC
135.4	119.0 292.125	120.75 348.0	121.75 (TWR NORTH) 118.05 (TWR SOUTH) 226.675 (ALL TWRs)	121.6	
282.225		PRM 119.625			



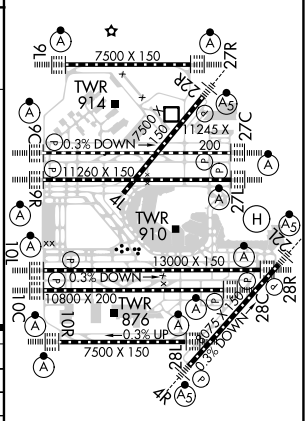
EC-3, 23 MAR 2023 to 20 APR 2023

EC-3, 23 MAR 2023 to 20 APR 2023



4000	hdg 093°	CGT R-336	CGT
VGSi and ILS glidepath not coincident (VGSi Angle 3.00/TCH 75).			
CATEGORY A B C D			
S-ILS 10C CAT II RA 102/12 100 DA 769			
S-ILS 10C CAT III RVR 06			

ELEV 680 TDZE 669



**CATEGORY II and III ILS - SPECIAL AIRCREW & AIRCRAFT CERTIFICATION REQUIRED**

HIRL all Rwys  
 TDZ/CL all Rwys except 4L

CHICAGO, ILLINOIS  
Amdt 1A 03JAN19

41°59'N-87°54'W

CHICAGO O'HARE INTL (ORD)

# ILS PRM RWY 10C (CAT II & III) (CLOSE PARALLEL)