

LOC/DME I-JAV <b>110.5</b>	APP CRS <b>093°</b>	Rwy Idg <b>11260</b> TDZE <b>668</b> Apt Elev <b>680</b>
Chan <b>42</b>		

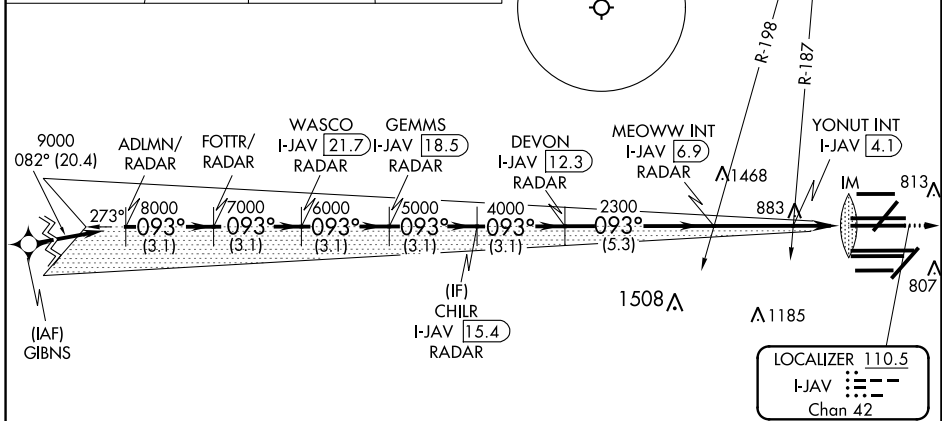
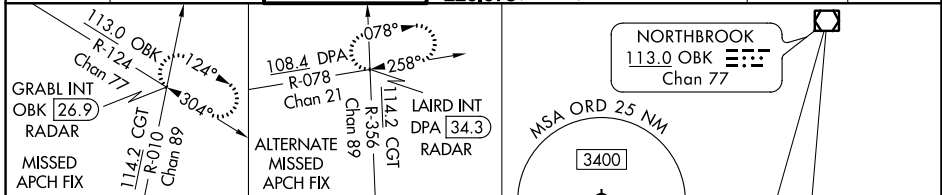
# ILS or LOC RWY 9R

CHICAGO O'HARE INTL (ORD)

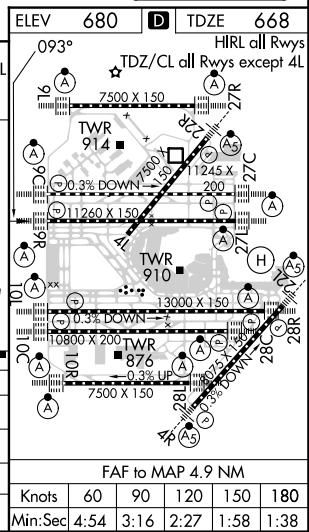
RNP APCH-GPS from GIBNS.  
 Aircraft not GPS equipped - RADAR required for procedure entry. RADAR or DME required.  
 Simultaneous approach authorized. For inop ALS, increase S-LOC 9R Cat C/D visibility to 2 SM.

ALS-F-2 MISSED APPROACH: Climb to 1200 then climb to 4000 on heading 085° and OBK VOR/DME R-124 to GRABL INT/OBK 26.9 DME/RADAR and hold.

D-ATIS <b>135.4</b> <b>282.225</b>	CHICAGO APP CON <b>119.0 292.125</b>	O'HARE TOWER <b>126.9 348.0</b>	GND CON (TWR NORTH) <b>124.125</b> (TWR SOUTH) <b>118.05</b> (ALL TWRs) <b>226.675</b>	(TWR CENTER) <b>121.75</b> (OBND) <b>121.9</b> (IBND)	CLNC DEL <b>121.6</b>	CPDLC
--	---	------------------------------------	---	---	--------------------------	-------



VGSI and ILS glidepath not coincident (VGSI Angle 3.00/TCH 83).					1200	4000	OBK R-124	GRABL INT
ADLMN/RADAR	FOTTR/RADAR	WASCO I-JAV 21.7	CHILR I-JAV 15.4	MEOWW INT I-JAV 6.9	hdg 085°			
9000	8000	7000	6000	5000	4000	2300	1380	
GS 3.00° TCH 58	3.1 NM	3.1 NM	3.1 NM	3.1 NM	3.1 NM	5.3 NM	2.8 NM	0.9 1.2
CATEGORY	A		B		C		D	
S-ILS 9R	868/18		200 (200-½)					
S-LOC 9R	1380/24	712 (700-½)		1380-1½		712 (700-1½)		
YONUT FIX MINIMUMS (DUAL VOR RECEIVERS OR DME REQUIRED)								
S-LOC 9R	1120/24	452 (500-½)		1120/45		452 (500-¾)		



EC-3, 23 MAR 2023 to 20 APR 2023

EC-3, 23 MAR 2023 to 20 APR 2023