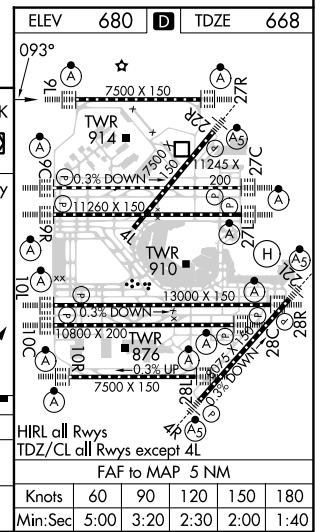
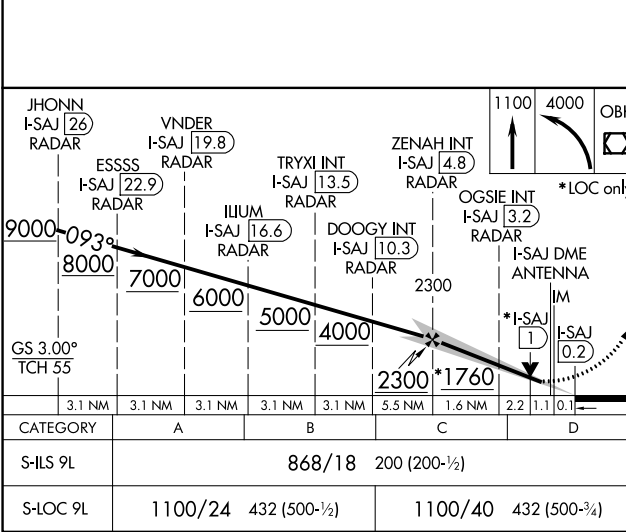
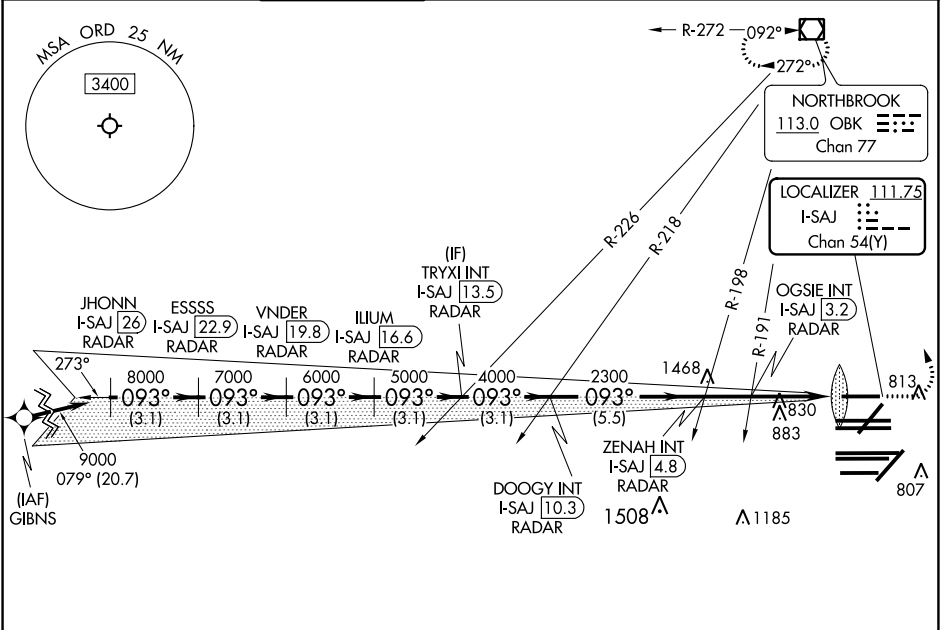


LOC/DME I-SAJ 111.75 Chan 54 (Y)	APP CRS 093°	Rwy Idg 7500 TDZE 668 Apt Elev 680
---	------------------------	--

ILS or LOC RWY 9L

CHICAGO O'HARE INTL (ORD)

RNAV-1 GPS or RADAR required for procedure entry. RADAR or DME required.		ALSIF-2 		MISSED APPROACH: Climb to 1100 then climbing left turn to 4000 direct OBK VOR/DME and hold, continue climb-in-hold to 4000.	
Simultaneous approach authorized.					
D-ATIS 135.4 282.225	CHICAGO APP CON 119.0 292.125	O'HARE TOWER 128.15 348.0	GND CON (TWR CENTER) 124.125 (TWR NORTH) 118.05 (TWR SOUTH) 226.675 (ALL TWRs)	CLNC DEL 121.6	CPDLC



EC-3, 23 MAR 2023 to 20 APR 2023

EC-3, 23 MAR 2023 to 20 APR 2023

CATEGORY	A	B	C	D
S-ILS 9L	868/18		200 (200-½)	
S-LOC 9L	1100/24	432 (500-½)	1100/40	432 (500-¾)

ELEV	680	TDZE	668
Knots	60	90	120 150 180
Min:Sec	5:00	3:20	2:30 2:00 1:40