

| | | |
|--|------------------------|--|
| LOC/DME I-OYG 111.9 Chan 56 | APP CRS 093° | Rwy Idg 11245 TDZE 673 Apt Elev 680 |
|--|------------------------|--|

ILS or LOC RWY 9C

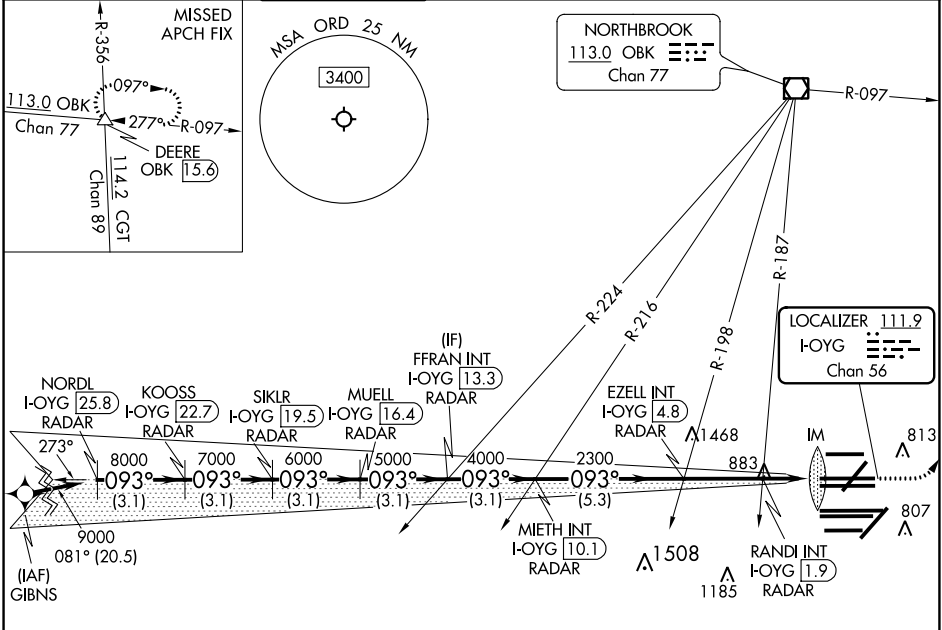
CHICAGO O'HARE INTL (ORD)

DME or RADAR required. From GIBNS: RNAV 1-GPS required. Aircraft not GPS equipped - RADAR required for procedure entry.

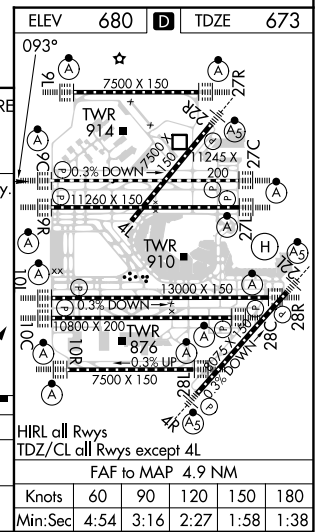
ALSF-2 MISSED APPROACH: Climb to 1200 then climbing left turn to 4000 on heading 037° and OBK VOR/DME R-097 to DEERE INT/ OBK 15.6 DME and hold.

Simultaneous approach authorized. For inop ALS, increase S-LOC 9C Cat C/D visibility to 1½ SM.

| | | | | | |
|--|---|-------------------------------------|--|--------------------------|-------|
| D-ATIS 135.4 282.225 | CHICAGO APP CON 119.0 292.125 | O'HARE TOWER 121.15 348.0 | GND CON (TWR CENTER) 124.125 (TWR NORTH) 118.05 (TWR SOUTH) 226.675 (ALL TWRs) | CLNC DEL 121.6 | CPDLC |
|--|---|-------------------------------------|--|--------------------------|-------|



| | | | | | | | |
|---|------------------------|------------------------|------------------------|----------------------------|---------------------------|---------------------------|---------------------------|
| NORDL I-OYG 25.8 RADAR | KOOSS I-OYG 22.7 RADAR | SIKLR I-OYG 19.5 RADAR | MUELL I-OYG 16.4 RADAR | MIETH INT I-OYG 10.1 RADAR | EZZEL INT I-OYG 4.8 RADAR | RANDI INT I-OYG 1.9 RADAR | DEERE I-OYG 1.2 I-OYG 0.2 |
| 3.1 NM | 3.1 NM | 3.1 NM | 3.1 NM | 3.1 NM | 5.3 NM | 2.9 NM | 0.8 1.1 0.1 |
| VGSi and ILS glidepath not coincident (VGSi Angle 3.00/TCH 72). GS 3.00° TCH 55 *LOC only. *I-OYG DME ANTENNA IM | | | | | | | |
| CATEGORY | A | | B | | C | | D |
| S-ILS 9C | 873/18 | | 200 (200-½) | | | | |
| S-LOC 9C | 1140/24 | 467 (500-½) | 1140/50 | | 467 (500-1) | | |



EC-3, 23 MAR 2023 to 20 APR 2023

EC-3, 23 MAR 2023 to 20 APR 2023