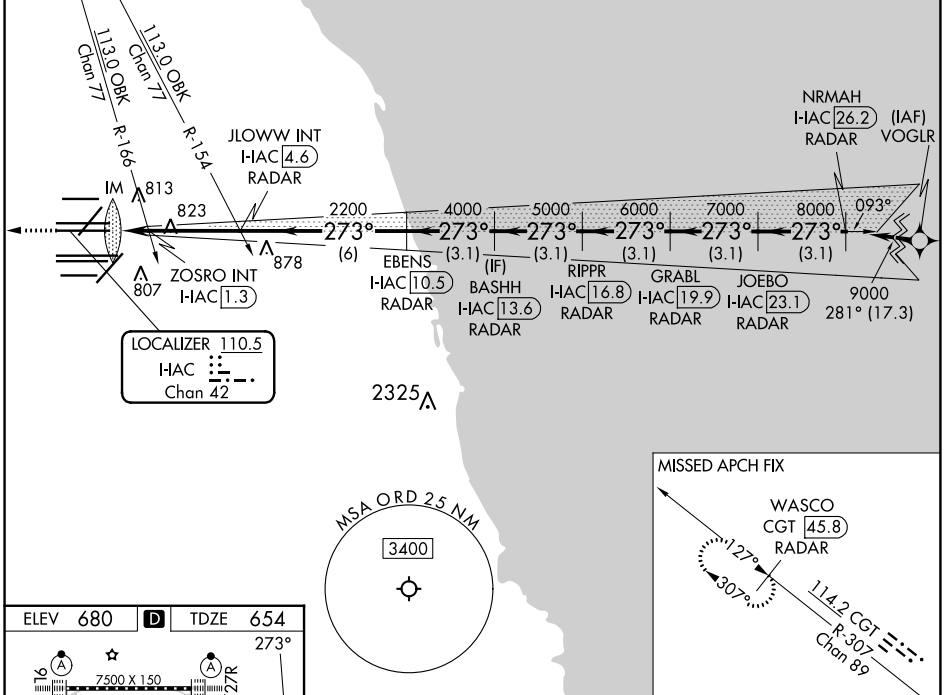


LOC/DME I-AIC 110.5 Chan 42	APP CRS 273°	Rwy ldg 11260 TDZE 654 Apt Elev 680
---	------------------------	--

ILS or LOC RWY 27L

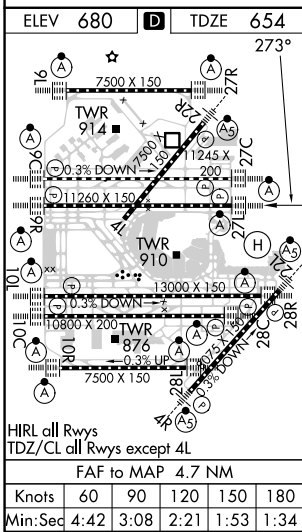
CHICAGO O'HARE INTL (ORD)

RNP APCH-GPS from VOGLR. Aircraft not GPS equipped - RADAR required for procedure entry. DME or RADAR required.		ALSF-2 		MISSED APPROACH: Climb to 1200 then climb to 4000 on heading 265° and on CGT VORTAC R-307 to WASCO/CGT 45.8 DME/RADAR and hold.		
▼ Simultaneous approach authorized. For inop ALS, increase S-LOC 27L Cat C/D visibility to 1 1/2 SM.						
D-ATIS 135.4 282.225	CHICAGO APP CON 119.0 292.125	O'HARE TOWER 126.9 348.0	GND CON 124.125 (TWR NORTH) 118.05 (TWR SOUTH) 226.675 (ALL TWRs)	(TWR CENTER) 121.75 (OBND) 121.9 (IBND)	CLNC DEL 121.6	CPDLC



EC-3, 23 MAR 2023 to 20 APR 2023

EC-3, 23 MAR 2023 to 20 APR 2023



ELEV 680	TDZE 654	VGSi and ILS glidepath not coincident (VGSi Angle 3.00/TCH 78).	
1200	4000	CGT R-307	WASCO CGT [45.8] RADAR
hdg 265°		JLOWW INT I-AIC [4.6] RADAR	BASHH I-AIC [13.6] RADAR
		ZOSRO INT I-AIC [1.3] RADAR	GRABL I-AIC [19.9] RADAR
		I-AIC DME ANTENNA	JOEBO I-AIC [23.1] RADAR
		I-AIC [0.2]	NRMAH I-AIC [26.2] RADAR
		2200	2200
		4000	4000
		5000	5000
		6000	6000
		7000	7000
		8000	8000
		9000	9000
		GS 3.00° TCH 57	
		CATEGORY A B C D	
		S-ILS 27L 854/18 200 (200-1/2)	
		S-LOC 27L 1160/24 506 (500-1/2) 1160/55 506 (500-1)	
		ZOSRO FIX MINIMUMS (DUAL VOR RECEIVERS OR DME REQUIRED)	
		S-LOC 27L 1080/24 426 (400-1/2) 1080/40 426 (400-3/4)	