

| | | |
|--|------------------------|--|
| LOC/DME I-UYJ 111.9 Chan 56 | APP CRS 273° | Rwy ldg 11245 TDZE 653 Apt Elev 680 |
|--|------------------------|--|

ILS or LOC RWY 27C

CHICAGO O'HARE INTL (ORD)

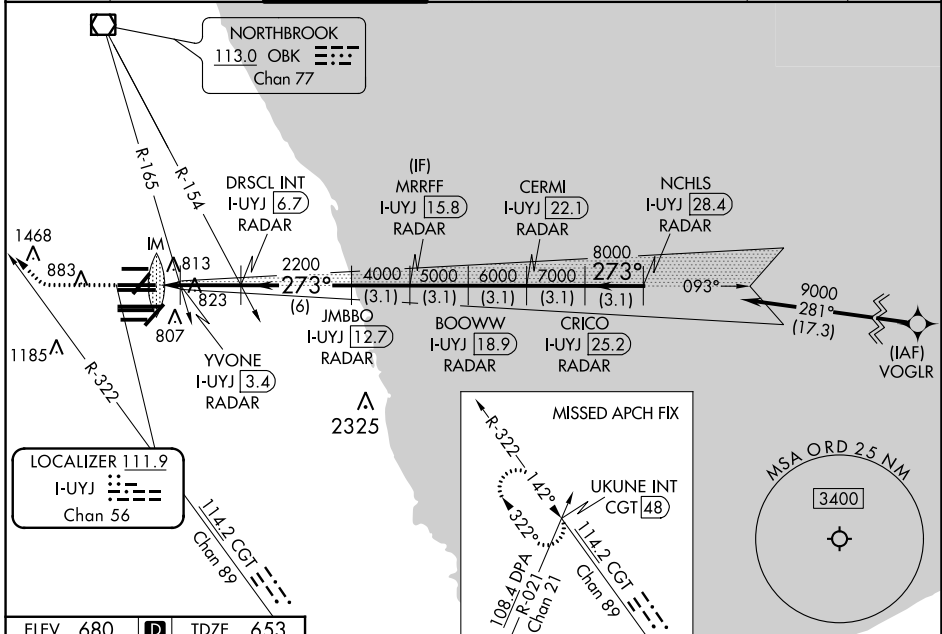
From VOGLR: RNAV 1-GPS required. Aircraft not GPS equipped - RADAR required for procedure entry. DME or RADAR required.

ALSF-2

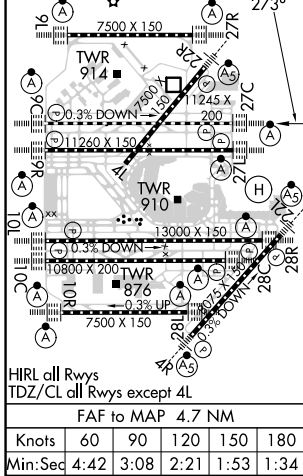
MISSED APPROACH: Climb to 1100 then climbing right turn to 4000 on heading 290° and CGT R-322 to UKUNE INT/ CGT 48 DME and hold.

Simultaneous approach authorized. For inop ALS, increase S-LOC 27C Cat C/D visibility to 1½ SM.

| | | | | | | |
|--|---|-------------------------------------|---|--|--------------------------|-------|
| D-ATIS 135.4 282.225 | CHICAGO APP CON 119.0 292.125 | O'HARE TOWER 121.15 348.0 | GND CON (TWR NORTH) 124.125 (TWR SOUTH) 118.05 (ALL TWRS) 226.675 | (TWR CENTER) (OBND) 121.75 (IBND) 121.9 | CLNC DEL 121.6 | CPDLC |
|--|---|-------------------------------------|---|--|--------------------------|-------|



| | | |
|----------|----------|----------|
| ELEV 680 | D | TDZE 653 |
|----------|----------|----------|



| | | | | | |
|---|---------------------|----------------------|---------------------|---|------------------|
| 1100 | 4000 | CGT R-322 | UKUNE INT | VGSI and ILS glidepath not coincident (VGSI Angle 3.00/TCH 75). | NCHLS I-UYJ 28.4 |
| ↑ | hdg 290° | | | | |
| *LOC only. | | | | | |
| I-UYJ 2 | YVONE I-UYJ 3.4 | DRISCL INT I-UYJ 6.7 | JMBBO I-UYJ 12.7 | BOOWW I-UYJ 18.9 | CRICO I-UYJ 25.2 |
| IM | 2200 | 2200 | 2200 | 2200 | 2200 |
| 0.1 | 1.3 | 3.3 NM | 6 NM | 3.1 NM | 3.1 NM |
| CATEGORY | A | B | C | D | |
| S-ILS 27C | 853/18 200 (200-½) | | | | |
| S-LOC 27C | 1160/24 507 (500-½) | | 1160/55 507 (500-1) | | |
| YVONE FIX MINIMUMS (DUAL VOR RECEIVERS or DME REQUIRED) | | | | | |
| S-LOC 27C | 1080/24 427 (400-½) | | 1080/40 427 (400-¾) | | |
| GS 3.00° TCH 56 | | | | | |