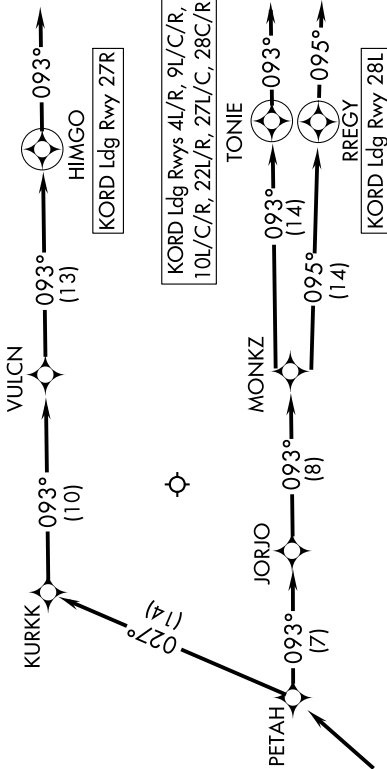


BENKY SIX ARRIVAL (RNAV) Arrival Routes

EC-3, 23 MAR 2023 to 20 APR 2023

CHICAGO APP CON
119.0 292.125
D-ATIS
135.4 282.225

- NOTE: RADAR required.
- NOTE: RNAV 1.
- NOTE: DME/DME/IRU or GPS required.
- NOTE: ORD LANDING EAST: Expect RADAR vectors to final approach course after AHSTN.



KORD Ldg Rwys 4L/R, 9L/C/R,
10L/C/R, 22L/R, 27L/C, 28C/R

KORD Ldg Rwy 28L

ARRIVAL ROUTE DESCRIPTION

From BENKY on track 065° to NEWRK, then on track 051° to AHSTN, then on track 045° to PETAH.

LANDING RWYS 4L/R, 9L/C/R, 10L/C/R, 22L/R, 27L/C, 28C/R:
From PETAH on track 093° to JORJO, then on track 093° to MONKZ, then on track 093° to TONIE, then on track 093°. Expect RADAR vectors to final approach course.

LANDING RWY 27R: From PETAH on track 027° to KURKK, then on track 093° to VULCN, then on track 093° to HIMGO, then on track 093°. Expect RADAR vectors to final approach course.

LANDING RWY 28L: From PETAH on track 093° to JORJO, then on track 093° to MONKZ, then on track 095° to RREGY, then on track 095°. Expect RADAR vectors to final approach course.

NOTE: Chart not to scale.

BENKY SIX ARRIVAL (RNAV) Arrival Routes

EC-3, 23 MAR 2023 to 20 APR 2023