

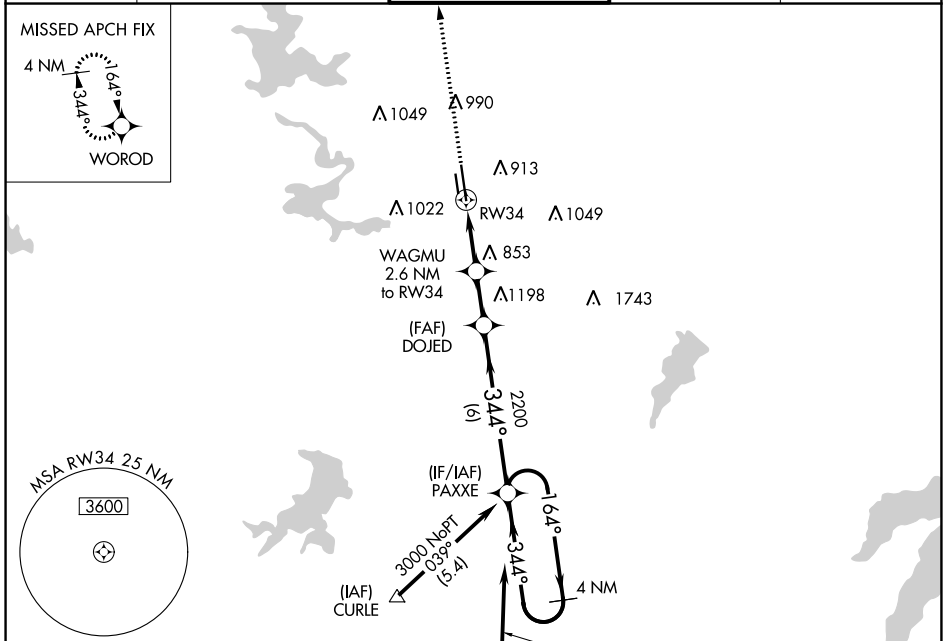
WAAS CH 53412 W34A	APP CRS 344°	Rwy ldg 7455 TDZE 680 Apt Elev 710
--	------------------------	---

RNAV (GPS) RWY 34

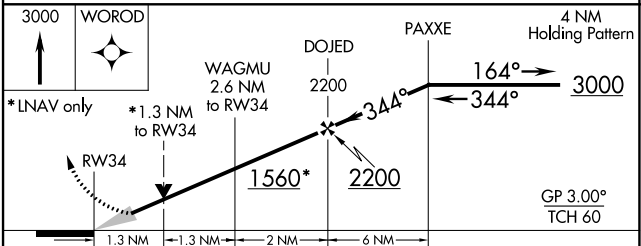
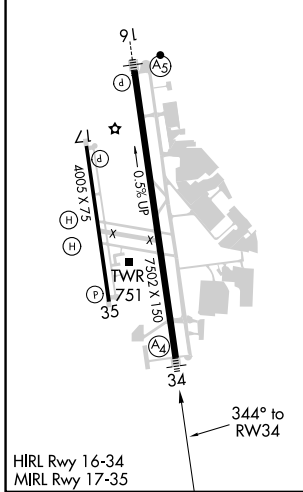
FORT WORTH MEACHAM INTL (FTW)

⚠ For uncompensated Baro-VNAV systems, LNAV/VNAV NA below -5°C (23°F) or above 54°C (130°F). DME/DME RNP-0.3 NA. For inop MALS, increase LNAV/VNAV Cat D and LNAV Cat D visibility to 1 3/8 mile.	MALS 	MISSED APPROACH: Climb to 3000 direct WOROD and hold.
--	----------	---

ATIS 120.7	REGIONAL APP CON (North) 118.1 306.95 (South) 135.975 379.9	MEACHAM TOWER 118.3 257.8	GND CON 121.9	CLNC DEL 124.65
----------------------	---	-------------------------------------	-------------------------	---------------------------



ELEV 710	D	TDZE 680
----------	----------	----------



CATEGORY	A	B	C	D
LPV DA		880-3/4	200 (200-3/4)	
LNAV/VNAV DA		1091-1 1/8	411 (400-1 1/8)	
LNAV MDA	1160-3/4	480 (500-3/4)	1160-1 1/8	480 (500-1 1/8)
C CIRCLING	1260-1 550 (600-1)	1280-1 570 (600-1)	1340-1 3/4 630 (700-1 3/4)	1500-2 1/2 790 (800-2 1/2)

SC-2, 23 MAR 2023 to 20 APR 2023

SC-2, 23 MAR 2023 to 20 APR 2023