

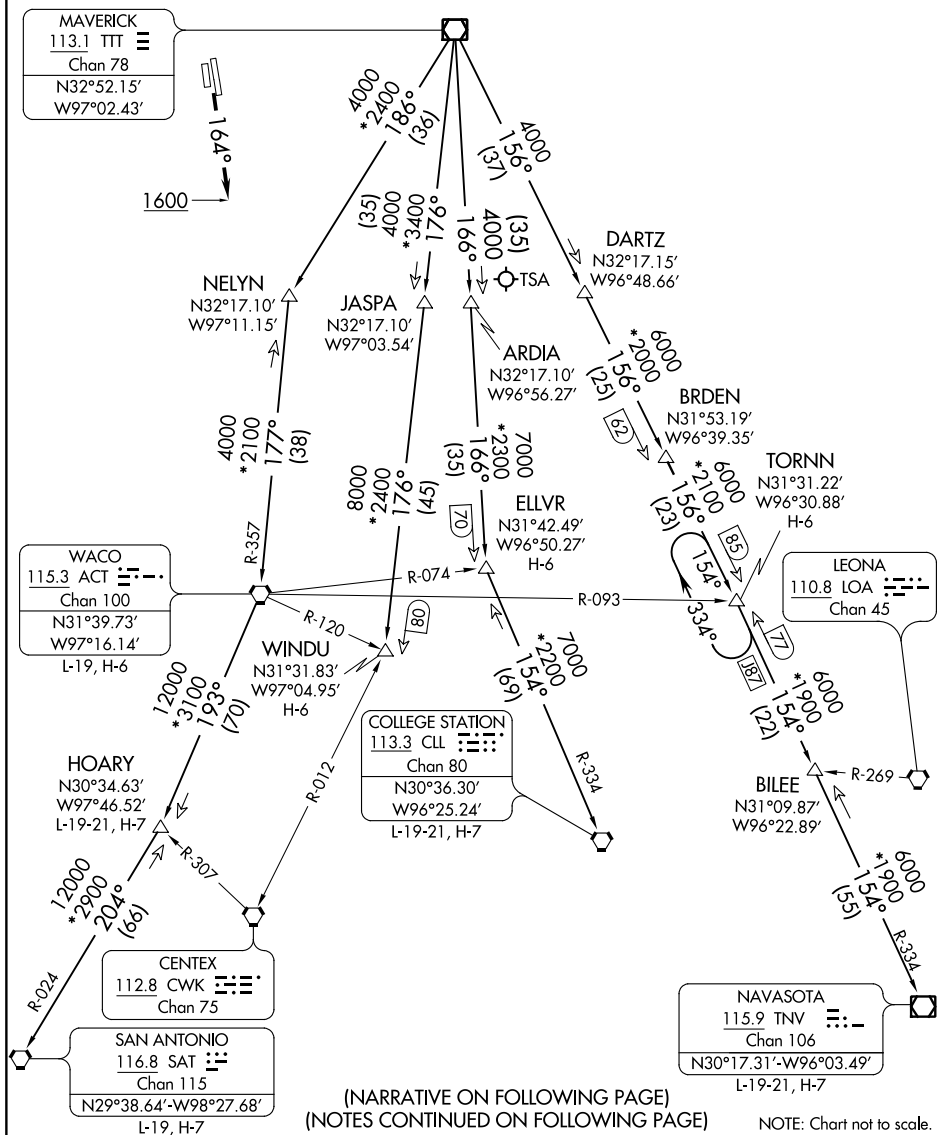
# JOE POOL SIX DEPARTURE

RADAR and DME required.

ATIS  
120.7  
CLNC DEL  
124.65  
GND CON  
121.9  
MEACHAM TOWER  
118.3 257.8  
REGIONAL DEP CON  
135.975 379.9

**TAKEOFF MINIMUMS**

Rwys 16, 17: Standard.  
Rwy 34: 300-2 or standard with minimum climb of 225' per NM to 1100, or alternatively, with standard takeoff minimums and a normal 200' per NM climb gradient, takeoff must occur no later than 2000' prior to DER.  
Rwy 35: 300-1½ or standard with minimum climb of 210' per NM to 900, or alternatively, with standard takeoff minimums and a normal 200' per NM climb gradient, takeoff must occur no later than 1200' prior to DER.



(NARRATIVE ON FOLLOWING PAGE)  
(NOTES CONTINUED ON FOLLOWING PAGE)

NOTE: Chart not to scale.

# JOE POOL SIX DEPARTURE