


WAAS CH 93609 W05A	APP CRS 050°	Rwy Idg 11981 TDZE 815 Apt Elev 815
--	------------------------	--

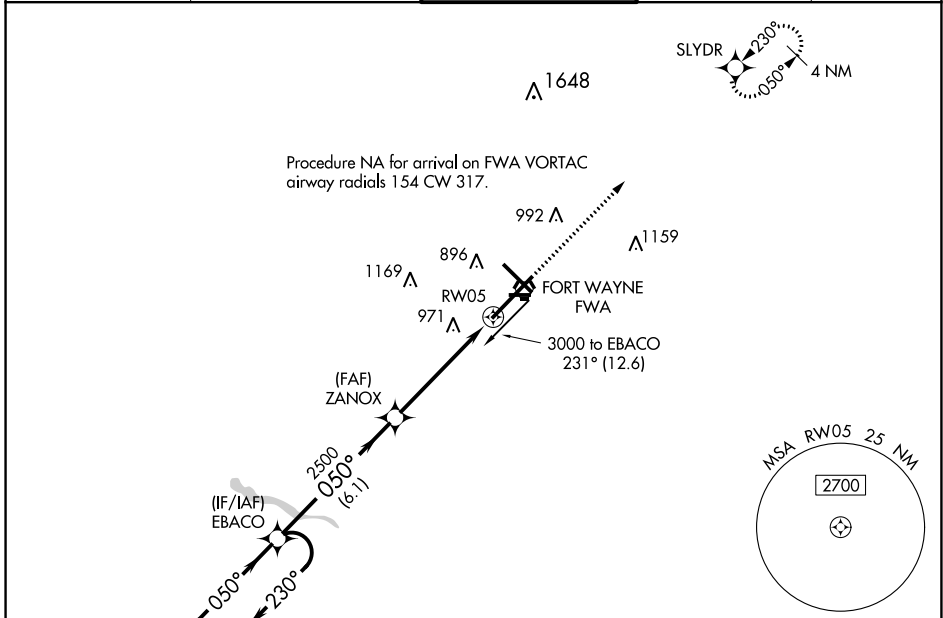
RNAV (GPS) RWY 5

FORT WAYNE INTL (FWA)

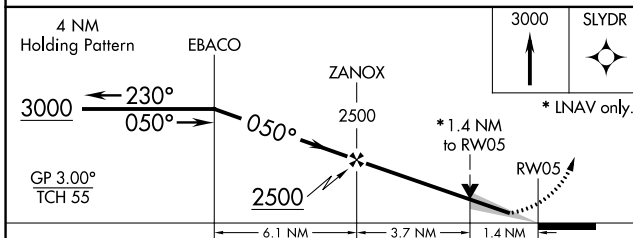
⚠ For uncompensated Baro-VNAV systems, procedure NA below -16°C (4°F) or above 47°C (116°F). DME/DME RNP-0.3 NA. For inop ALS, increase LPV Cat E visibility to RVR 4000, LNAV/VNAV all Cats visibility to 1½ SM and LNAV Cat C/D/E visibility to 1¾ SM.

ALSF-2  MISSED APPROACH: Climb to 3000 direct SLYDR and hold.

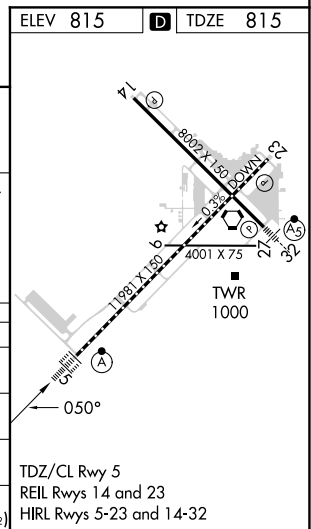
ATIS 121.25 360.825	FORT WAYNE APP CON 127.2 284.6	FORT WAYNE TOWER 119.1 269.325	GND CON 121.9 348.6	CLNC DEL 124.75
-------------------------------	--	--	-------------------------------	---------------------------



4 NM Holding Pattern	EBACO	ZANOX	RW05	3000 SLYDR
----------------------	-------	-------	------	------------



CATEGORY	A	B	C	D	E
LPV DA	1065/18 250 (300-½)				
LNAV/VNAV DA	1275/60 460 (500-1¼)				
LNAV MDA	1300/24	485 (500-½)	1300/50		485 (500-1)
C CIRCLING	1300-1	485 (500-1)	1420-1¾ 605 (700-1¾)	1520-2¼ 705 (800-2¼)	1520-2½ 705 (800-2½)



EC-2, 23 MAR 2023 to 20 APR 2023

EC-2, 23 MAR 2023 to 20 APR 2023