

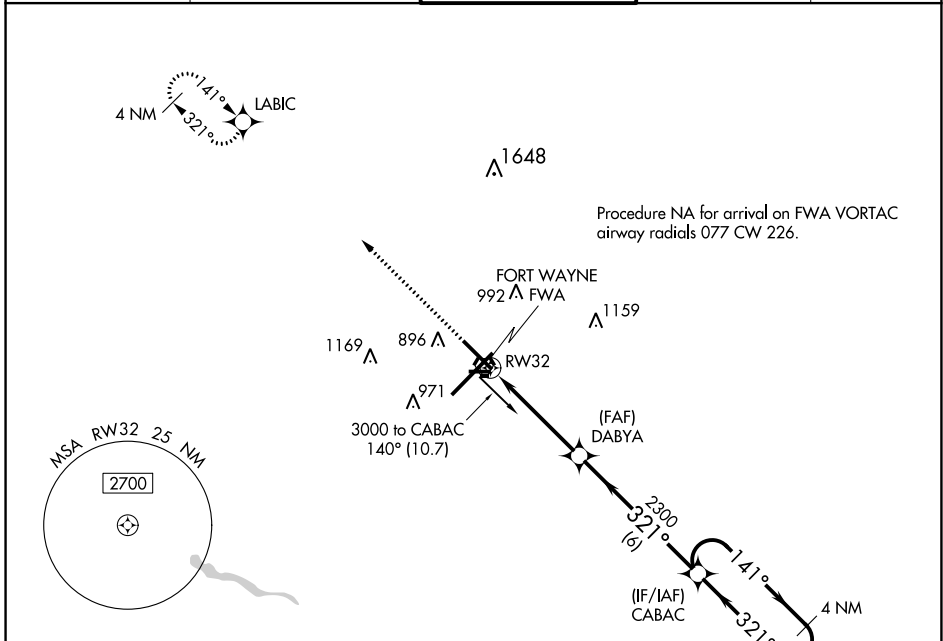
WAAS CH 82417 W32A	APP CRS 321°	Rwy Idg TDZE Apt Elev	8001 800 815
--	------------------------	-----------------------------	---

RNAV (GPS) RWY 32

FORT WAYNE INTL (FWA)

<p>⚠ For uncompensated Baro-VNAV systems, LNAV/VNAV NA below -16°C (4°F) or above 47°C (116°F). DME/DME RNP-0.3 NA. ** RVR 1800 authorized with use of FD or AP or HUD to DA.</p>	<p>MALSR (AS)</p>	<p>MISSED APPROACH: Climb to 3000 direct LABIC and hold.</p>
---	------------------------------	--

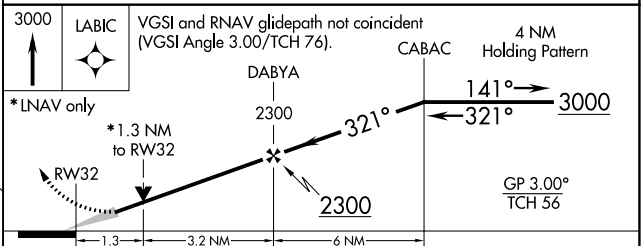
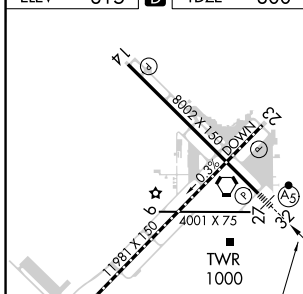
ATIS 121.25 360.825	FORT WAYNE APP CON 127.2 284.6	FORT WAYNE TOWER 119.1 269.325	GND CON 121.9 348.6	CLNC DEL 124.75
-------------------------------	--	--	-------------------------------	---------------------------



EC-2, 23 MAR 2023 to 20 APR 2023

EC-2, 23 MAR 2023 to 20 APR 2023

ELEV	815	D	TDZE	800
------	------------	----------	------	------------



CATEGORY	A	B	C	D
LPV DA	**1000/24 200 (200-½)			
LNAV/VNAV DA	1250/50 450 (500-1)			
LNAV MDA	1280/24	480 (500-½)	1280/50	480 (500-1)
C CIRCLING	1300-1	485 (500-1)	1420-1¾ 605 (700-1¾)	1520-2¼ 705 (800-2¼)

TDZ/CL Rwy 5
REIL Rws 14 and 23
HIRL Rws 5-23 and 14-32