

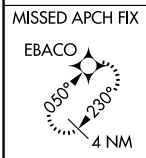
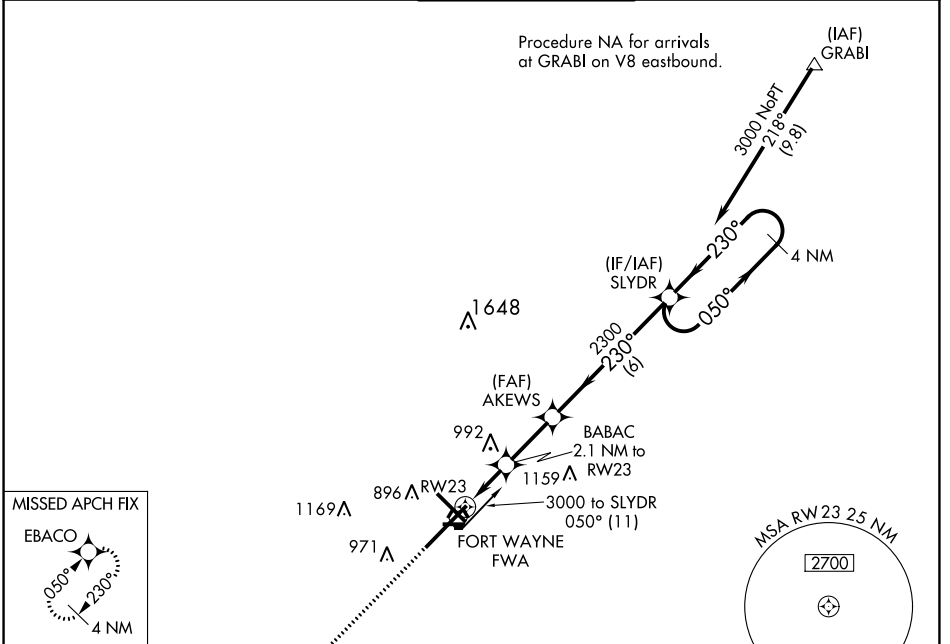
WAAS CH <b>69599</b> <b>W23A</b>	APP CRS <b>230°</b>	Rwy Idg <b>11981</b> TDZE <b>799</b> Apt Elev <b>815</b>
--	------------------------	--

# RNAV (GPS) RWY 23

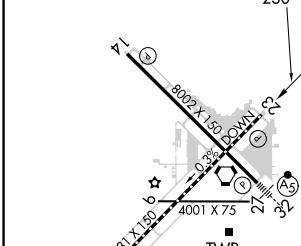
FORT WAYNE INTL (FWA)

<p>For uncompensated Baro-VNAV systems, LNAV/VNAV NA below -16°C (4°F) or above 47°C (116°F). DME/DME RNP-0.3 NA.</p>	<p>MISSED APPROACH: Climb to 3000 direct EBACO and hold.</p>			
	<p>ASR</p>			

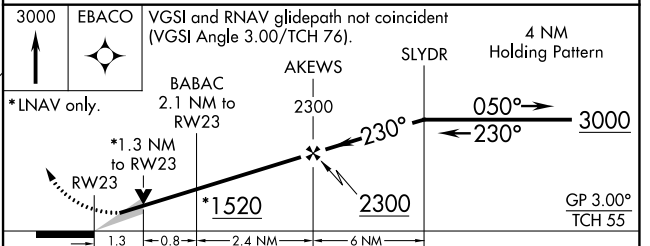
ATIS <b>121.25 360.825</b>	FORT WAYNE APP CON <b>127.2 284.6</b>	FORT WAYNE TOWER <b>119.1 269.325</b>	GND CON <b>121.9 348.6</b>	CLNC DEL <b>124.75</b>
-------------------------------	--	--	-------------------------------	---------------------------



ELEV 815	<b>D</b>	TDZE 799
----------	----------	----------



Procedure NA for arrival on FWA VORTAC airway radials 335 CW 134.



CATEGORY	A	B	C	D	E
LPV DA		1053/40	254 (300-¾)		
LNAV/VNAV DA		1230-1⅜	431 (500-1⅝)		
LNAV MDA	1300/55	501 (500-1)	1300-1⅜	501 (500-1⅝)	
<b>C</b> CIRCLING	1300-1	485 (500-1)	1420-1¾ 605 (700-1¾)	1520-2¼ 705 (800-2¼)	1520-2½ 705 (800-2½)

TDZ/CL Rwy 5  
REIL Rwy 14 and 23  
HIRL Rwy 5-23 and 14-32

EC-2, 23 MAR 2023 to 20 APR 2023

EC-2, 23 MAR 2023 to 20 APR 2023