

WAAS CH <b>61310</b> <b>W27A</b>	APP CRS <b>269°</b>	Rwy Idg TDZE Apt Elev	<b>6502</b> <b>139</b> <b>147</b>
--	------------------------	-----------------------------	---

# RNAV (GPS) RWY 27

FLORENCE RGNL (FLO)

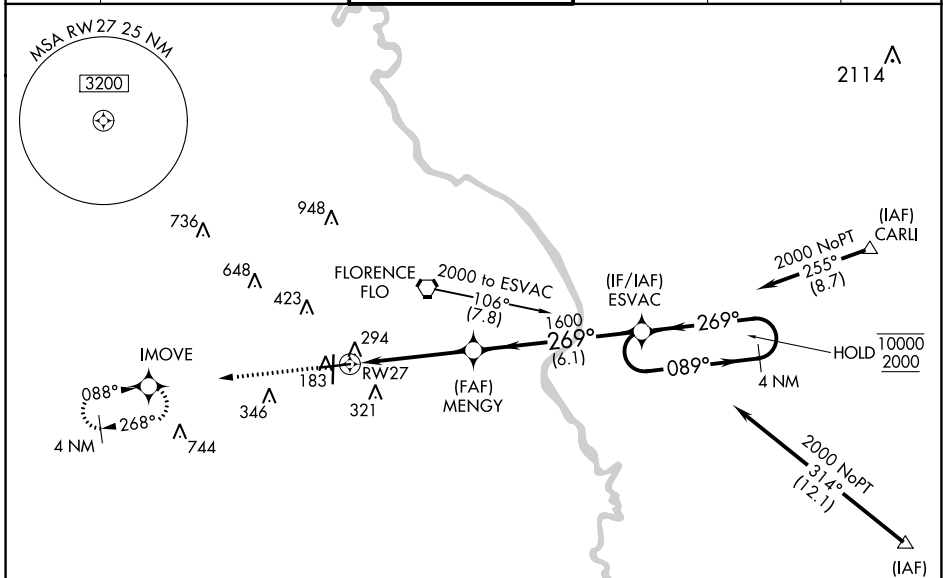
RNP APCH-GPS.

**⚠** Circling Rwy 1, 19 NA at night. Baro-VNAV NA when using Darlington altimeter setting. For uncompensated Baro-VNAV systems, LNAV/VNAV NA below -15°C or above 48°C.

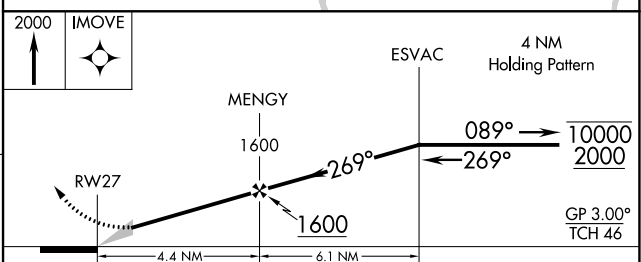
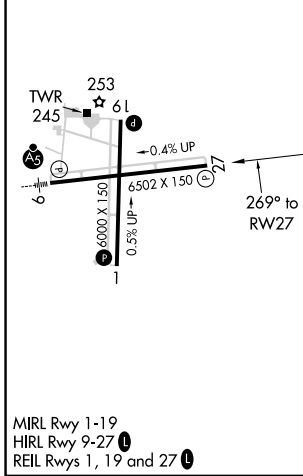
**⚠** When local altimeter setting not received, use Darlington altimeter setting: increase LPV DA to 534 feet and visibility all Cats ¼ SM; increase LNAV/VNAV DA to 655 feet and visibility all Cats ¼ SM; increase all MDA 60 feet and visibility LNAV Cat D and Circling Cat C and D ¼ SM.

MISSED APPROACH:  
Climb to 2000 direct  
IMOVE and hold.

ATIS <b>123.625</b>	FLORENCE APP CON* <b>118.6 341.7</b> (256°-074°) <b>135.25 316.15</b> (075°-255°)	FLORENCE TOWER* <b>125.1</b> (CTAF) <b>353.85</b>	GND CON <b>121.9 353.85</b>	CLNC DEL <b>121.9 353.85</b>	UNICOM <b>122.95</b>
------------------------	---	--	--------------------------------	---------------------------------	-------------------------



ELEV 147	TDZE 139
----------	----------



CATEGORY	A	B	C	D
LPV DA		474-1¼	335 (400-1¼)	
LNAV/VNAV DA		595-1¾	456 (500-1¾)	
LNAV MDA	560-1	421 (500-1)	560-1¼	421 (500-1¼)
CIRCLING	640-1 493 (500-1)	660-1 513 (600-1)	900-2¼ 753 (800-2¼)	900-2½ 753 (800-2½)

SE-2, 23 MAR 2023 to 20 APR 2023

SE-2, 23 MAR 2023 to 20 APR 2023