

LOC I-FLO	APP CRS	Rwy Idg	<b>6502</b>
<b>109.1</b>	<b>089°</b>	TDZE	<b>147</b>
		Apt Elev	<b>147</b>

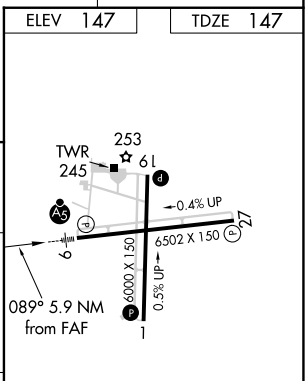
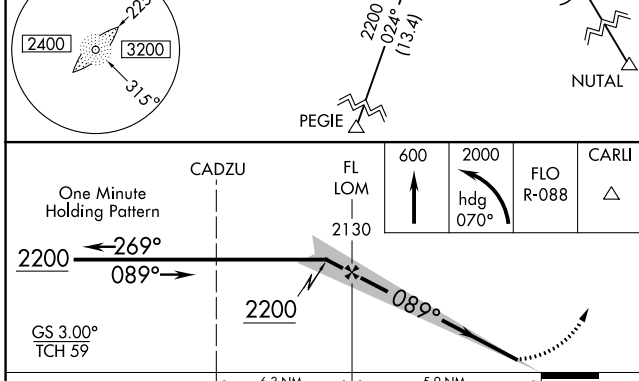
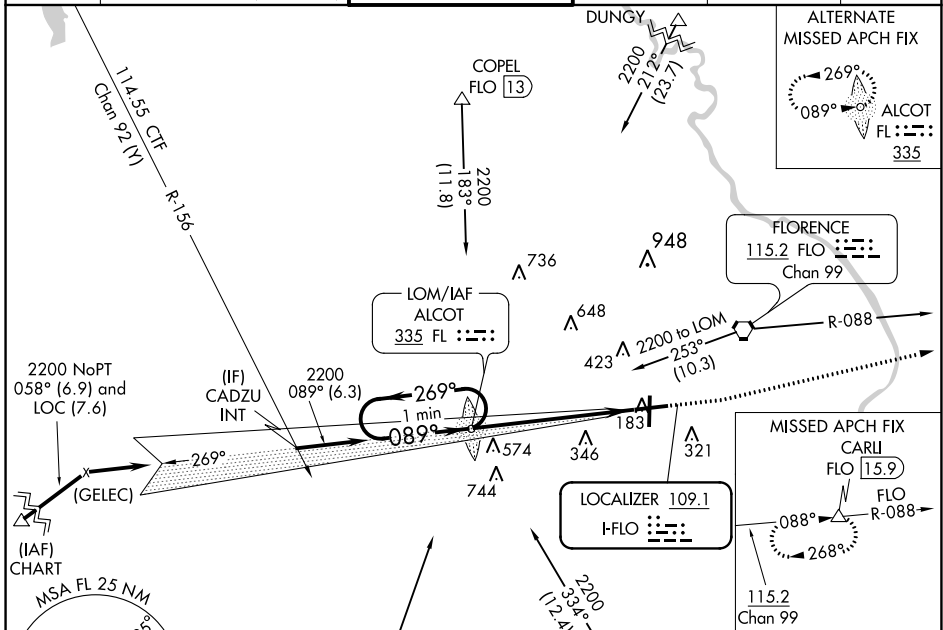
# ILS or LOC RWY 9

FLORENCE RGNL (FLO)

**DME required.** When local altimeter setting not received, use Darlington altimeter setting and increase all DA/MDA 60 feet, increase S-LOC and Circling Cats B/C/D visibility ¼ mile. Night Landing: Rwy 1, 19 NA.

**MALSR** MISSED APPROACH: Climb to 600 then climbing left turn to 2000 via heading 070° and FLO VORTAC R-088 to CARLI/ FLO 15.9 DME and hold.

ATIS	FLORENCE APP CON*	FLORENCE TOWER*	GND CON	CLNC DEL	UNICOM
<b>123.625</b>	<b>118.6 341.7</b> (256°-074°)	<b>125.1 (CTAF) 353.85</b>	<b>121.9 353.85</b>	<b>121.9 353.85</b>	<b>122.95</b>
	<b>135.25 316.15</b> (075°-255°)				



CATEGORY	A	B	C	D
S-ILS 9		347-½	200 (200-½)	
S-LOC 9	840-½	693 (700-½)	840-1½ 693 (700-1½)	840-1¾ 693 (700-1¾)
CIRCLING	840-1	693 (700-1)	900-2¼ 753 (800-2¼)	900-2½ 753 (800-2½)

REIL Rwy 1, 19 and 27  
HIRL Rwy 9-27  
FAF to MAP 5.9 NM

Knots	60	90	120	150	180
Min:Sec	5:54	3:56	2:57	2:22	1:58

SE-2, 23 MAR 2023 to 20 APR 2023

SE-2, 23 MAR 2023 to 20 APR 2023