

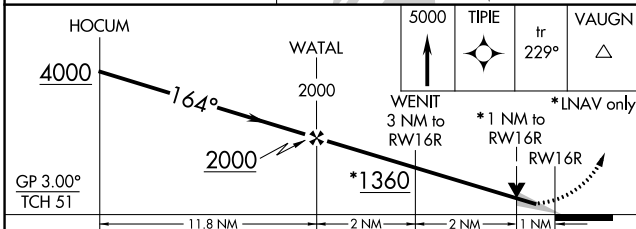
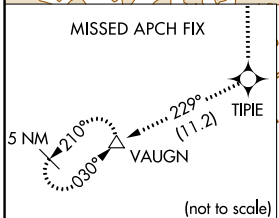
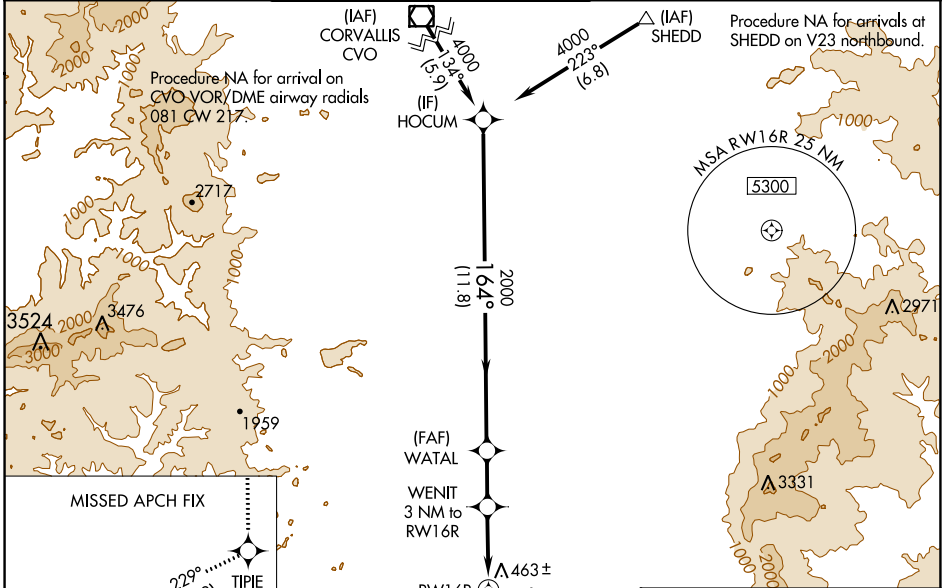
WAAS CH 86518 W16B	APP CRS 164°	Rwy Idg TDZE 364 Apt Elev 374	8009 364 374
--	------------------------	---	---

RNAV (GPS) Y RWY 16R

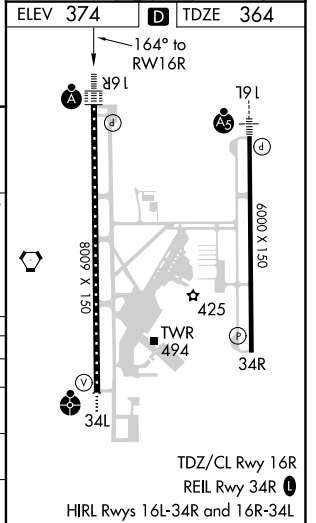
MAHLON SWEET FLD (EUG)

RNP APCH.	ALSF-2 	MISSED APPROACH: Climb to 5000 direct TIPIE and on track 229° to VAUGN and hold, continue climb-in-hold to 5000.
Simultaneous approach authorized. LNAV procedure NA during simultaneous operations. Use of FD or AP providing RNAV track guidance required during simultaneous operations. For uncompensated Baro-VNAV systems, LNAV/VNAV NA below -10°C or above 54°C. For inop ALS, increase LNAV/VNAV all Cats visibility to RVR 4500, increase LNAV Cat C/D visibility to RVR 5500.		

ATIS 125.225	CASCADE APP CON ★ 119.6 348.7	EUGENE TOWER ★ 118.9 (CTAF) 0 371.9 (Rwy 16R/34L) 124.15 371.9 (Rwy 16L/34R)	GND CON 121.7 269.5	CLNC DEL 121.7 269.5	UNICOM 122.95
------------------------	---	---	-------------------------------	--------------------------------	-------------------------



CATEGORY	A	B	C	D
LPV DA		564/18	200 (200-½)	
LNAV/VNAV DA		628/24	264 (300-½)	
LNAV MDA	720/24	356 (400-½)	720/30	356 (400-¾)
CIRCLING	820-1 446 (500-1)	840-1 466 (500-1)	1000-1¾ 626 (700-1¾)	1140-2½ 766 (800-2½)



NW-1, 23 MAR 2023 to 20 APR 2023

NW-1, 23 MAR 2023 to 20 APR 2023