

RNAV (RNP) Z RWY 34R

MAHLON SWEET FLD (EUG)

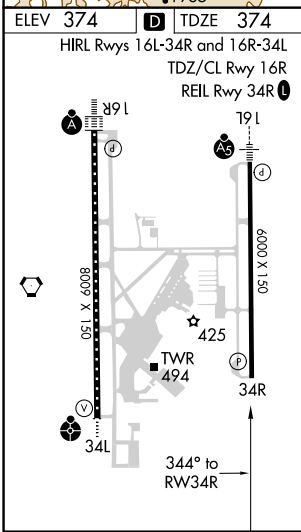
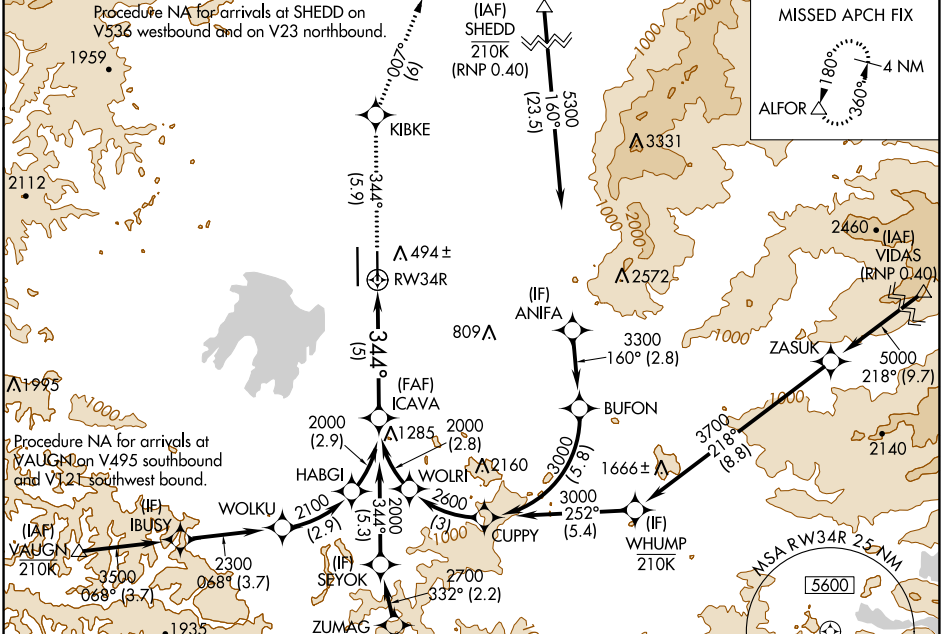
APP CRS	Rwy Idg	6000
344°	TDZE	374
	Apt Elev	374

RNP AR APCH - GPS.

Simultaneous approach authorized. For uncompensated Baro-VNAV systems, procedure NA below -6°C or above 54°C.

MISSED APPROACH: Climb to 3000 on track 344° to KIBKE and on track 007° to ALFOR and hold.

ATIS	CASCADE APP CON *	EUGENE TOWER *	GND CON	CLNC DEL	UNICOM
125.225	119.6 348.7	118.9 (CTAF) 371.9 (Rwy 16R/34L) 124.15 371.9 (Rwy 16L/34R)	121.7 269.5	121.7 269.5	122.95

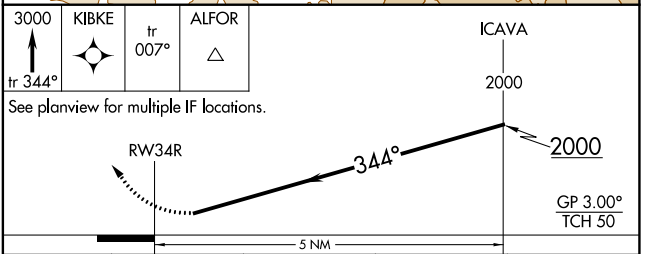


ELEV 374 TDZE 374
HIRL Rwy 16L-34R and 16R-34L
TDZ/CL Rwy 16R
REIL Rwy 34R

Procedure NA for arrivals at SHEDD on V536 westbound and on V23 northbound.

Procedure NA for arrivals at VAUGN on V495 southbound and V21 southwest bound.

Procedure NA for arrivals at SAGIN on V23 southbound.



CATEGORY	A	B	C	D
RNP 0.20 DA		754-1	380 (400-1)	
RNP 0.30 DA		786-1 $\frac{1}{8}$	412 (500-1 $\frac{1}{8}$)	

AUTHORIZATION REQUIRED

NW-1, 23 MAR 2023 to 20 APR 2023

NW-1, 23 MAR 2023 to 20 APR 2023