

# TACAN RWY 23R

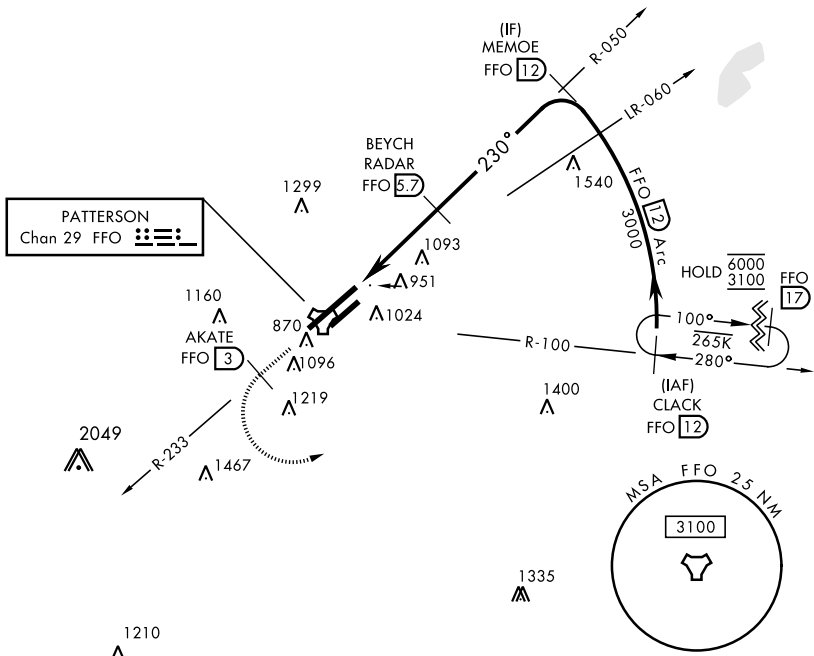
TACAN FFO Chan <b>29</b>	APCH CRS <b>230°</b>	Rwy Ildg THRE <b>12,600</b> 823 Arprt Elev <b>823</b>	AL-108 [USAF]	WRIGHT-PATTERSON AFB (KFFO)
--------------------------	----------------------	---	---------------	-----------------------------

▽ \* When ALS inop, increase CAT AB RVR to 55 and vis to 1 mile, CAT CDE vis to 1½ miles.
 
ALSF-1

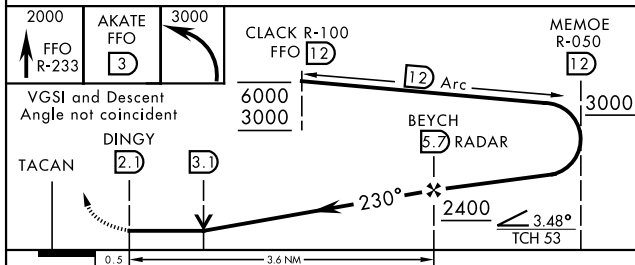
† MISSED APPROACH: Climb to 2000 via FFO R-233, at 3 DME turn left direct CLACK climbing to 3000 and hold.

ATIS <b>124.475 269.9</b>	COLUMBUS APP CON <b>118.85 269.275</b>	PATTERSON TOWER <b>126.9 281.45</b>	GND CON <b>121.8 335.8</b>
------------------------------	---	--	-------------------------------

\*\* When Rwy 23R VGSI inop, circling to Rwy 23R NA at night.
 
† Missed approach requires use of RNAV or ATC radar monitoring.



EMERG SAFE ALT 100 NM 3700



ELEV 823	THRE 823
----------	----------

CATEGORY	A	B	C	D	E
S-23R *	1360/24 537 (600-½)		1360/55	537	(600-1)
<span style="border: 1px solid black; padding: 2px;">CIRCLING</span> **	1380-1 557 (600-1)	1440-1 617 (700-1)	1560-2 737 (800-2)	1620-2½ 797 (800-2½)	1620-2¾ 797 (800-2¾)

# TACAN RWY 23R

EC-2, 23 MAR 2023 to 20 APR 2023

EC-2, 23 MAR 2023 to 20 APR 2023