

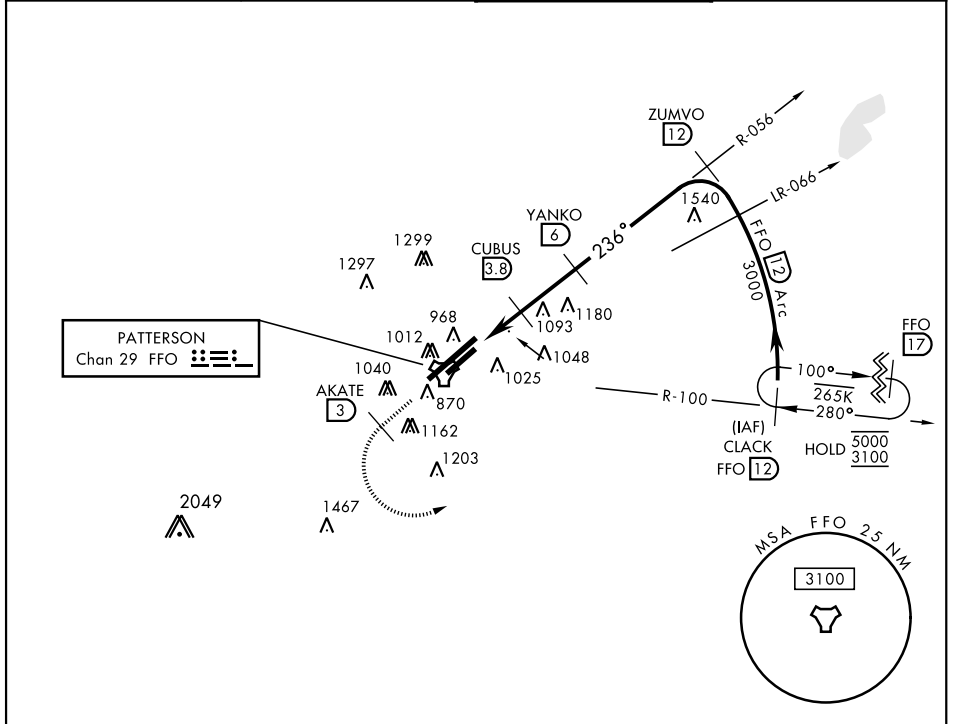
# TACAN RWY 23L

TACAN FFO Chan <b>29</b>	APCH CRS <b>236°</b>	Rwy Idg TDZE Arprt Elev <b>7000</b> <b>818</b> <b>823</b>	AL-108 [USAF]	WRIGHT-PATTERSON AFB (KFFO)
-----------------------------	-------------------------	--	---------------	-----------------------------

\* When Rwy 23R VGS1 inop, circling to Rwy 23R NA at night.
 

 MISSED APPROACH: Climb to 2000 via FFO R-233, at 3 DME turn left direct CLACK climbing to 3000 and hold.

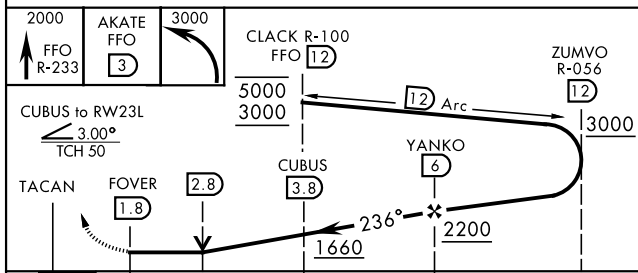
ATIS <b>124.475 269.9</b>	COLUMBUS APP CON <b>118.85 269.275</b>	PATTERSON TOWER <b>126.9 281.45</b>	GND CON <b>121.8 335.8</b>
------------------------------	---	--	-------------------------------



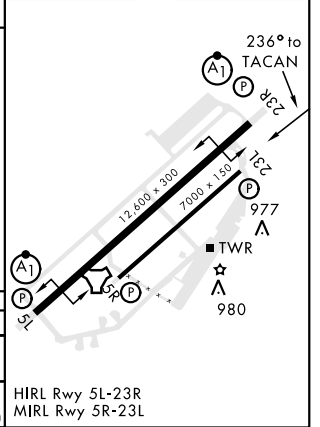
EC-2, 23 MAR 2023 to 20 APR 2023

EC-2, 23 MAR 2023 to 20 APR 2023

EMERG SAFE ALT 100 NM 3700



ELEV 823	TDZE 818
----------	----------



CATEGORY	A	B	C	D	E
S-23L	1340-1 522 (600-1)	1340-1½ 522 (600-1½)	1340-1¾ 522 (500-1¾)	1340-1¾ 522 (500-1¾)	1340-1¾ 522 (500-1¾)
CIRCLING*	1380-1 557 (600-1)	1400-1 577 (600-1)	1420-1½ 597 (600-1½)	1460-2 637 (700-2)	1620-2¾ 797 (800-2¾)

HIRL Rwy 5L-23R  
MIRL Rwy 5R-23L

# TACAN RWY 23L