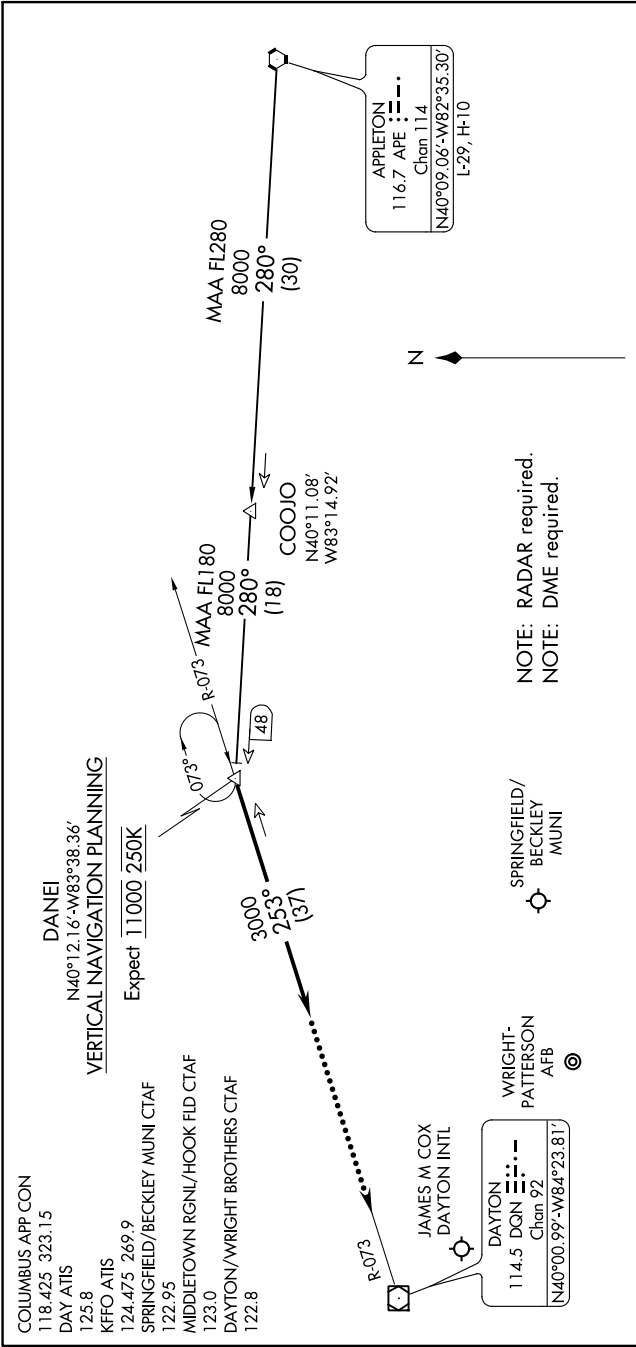


EC-2, 23 MAR 2023 to 20 APR 2023



**APPLETON TRANSITION (APE.DANEI3):** From over APE VORTAC on APE R-280 to DANEI. Thence....

....From over DANEI on heading 253°. Expect RADAR vectors to final approach course.

**LOST COMMUNICATIONS:**

In the event of lost communications: At DANEI, proceed direct DQN VOR/DME maintain 3000' until DQN VOR/DME.

NOTE: Chart not to scale.

EC-2, 23 MAR 2023 to 20 APR 2023