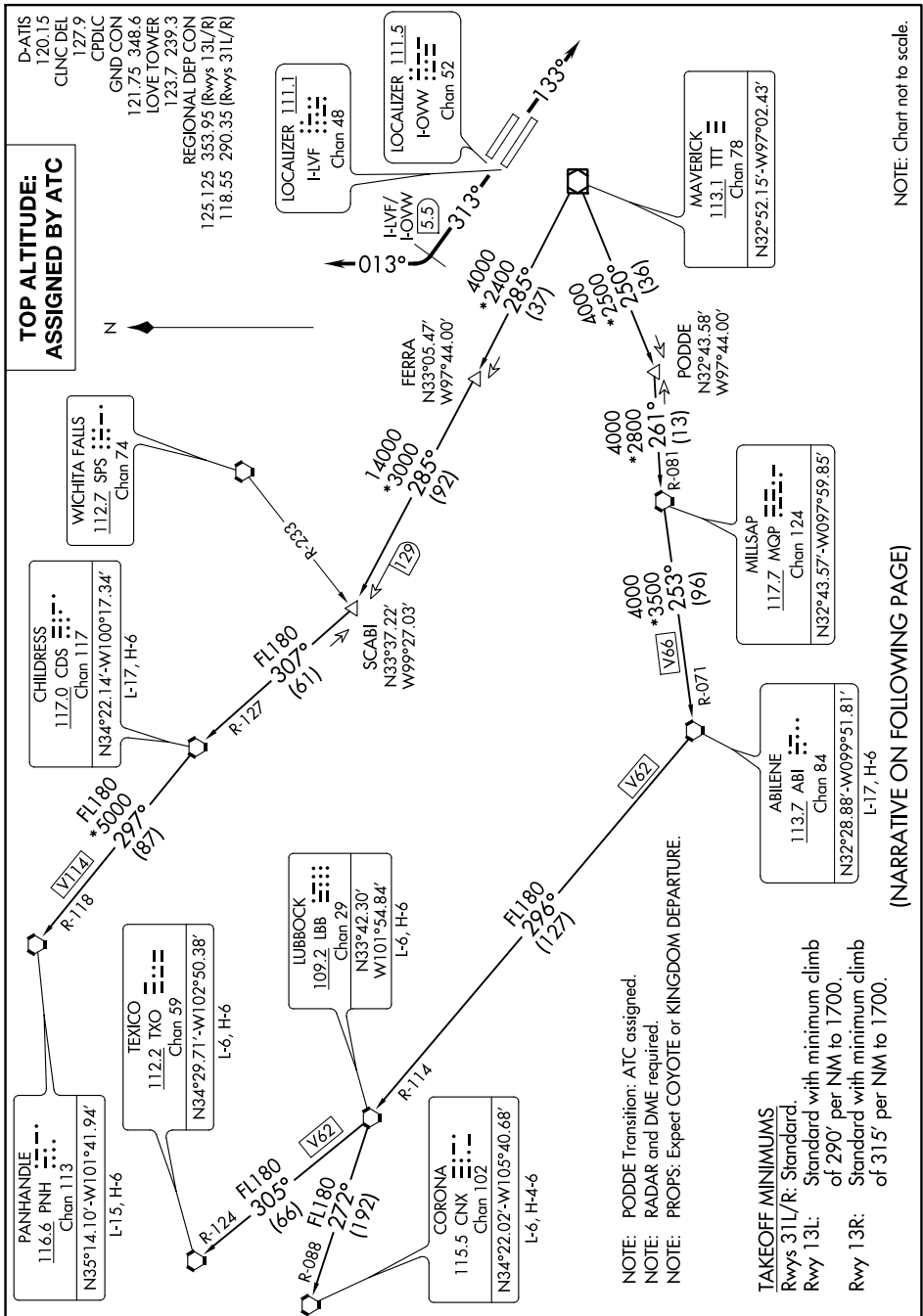


# WORTH NINE DEPARTURE

SC-2, 23 MAR 2023 to 20 APR 2023



**TOP ALTITUDE:  
ASSIGNED BY ATC**

D-ATIS 120.15  
CLNC DEL 127.9  
CPDLC  
GND CON 121.75 348.6  
LOVE TOWER 123.7 239.3  
REGIONAL DEP CON 125.125 353.95 (Rwys 13L/R)  
118.55 290.35 (Rwys 31L/R)

LOCALIZER 111.1  
I-LVF  
Chan 48

LOCALIZER 111.5  
I-OVW  
Chan 52

MAVERICK  
113.1 TTT  
Chan 78  
N32°52.15'-W97°02.43'

MILLSAP  
117.7 MGP  
Chan 124  
N32°43.57'-W097°59.85'

ABILENE  
113.7 ABI  
Chan 84  
N32°28.88'-W099°51.81'

NOTE: PODDE Transition: ATC assigned.  
NOTE: RADAR and DME required.  
NOTE: PROPS: Expect COYOTE or KINGDOM DEPARTURE.

**TAKEOFF MINIMUMS**  
Rwys 31L/R: Standard  
Rwy 13L: Standard with minimum climb of 290' per NM to 1700.  
Rwy 13R: Standard with minimum climb of 315' per NM to 1700.

(NARRATIVE ON FOLLOWING PAGE)

NOTE: Chart not to scale.

SC-2, 23 MAR 2023 to 20 APR 2023

# WORTH NINE DEPARTURE