

VENUS FOUR DEPARTURE

D-ATIS
120.15
CLNC DEL
127.9
CPDLC
GND CON
121.75 348.6
LOVE TOWER
123.7 239.3
REGIONAL DEP CON
125.125 353.95

RADAR required. DME required.

LOCALIZER 111.1
I-DPX
Chan 48

**TOP ALTITUDE:
5000**

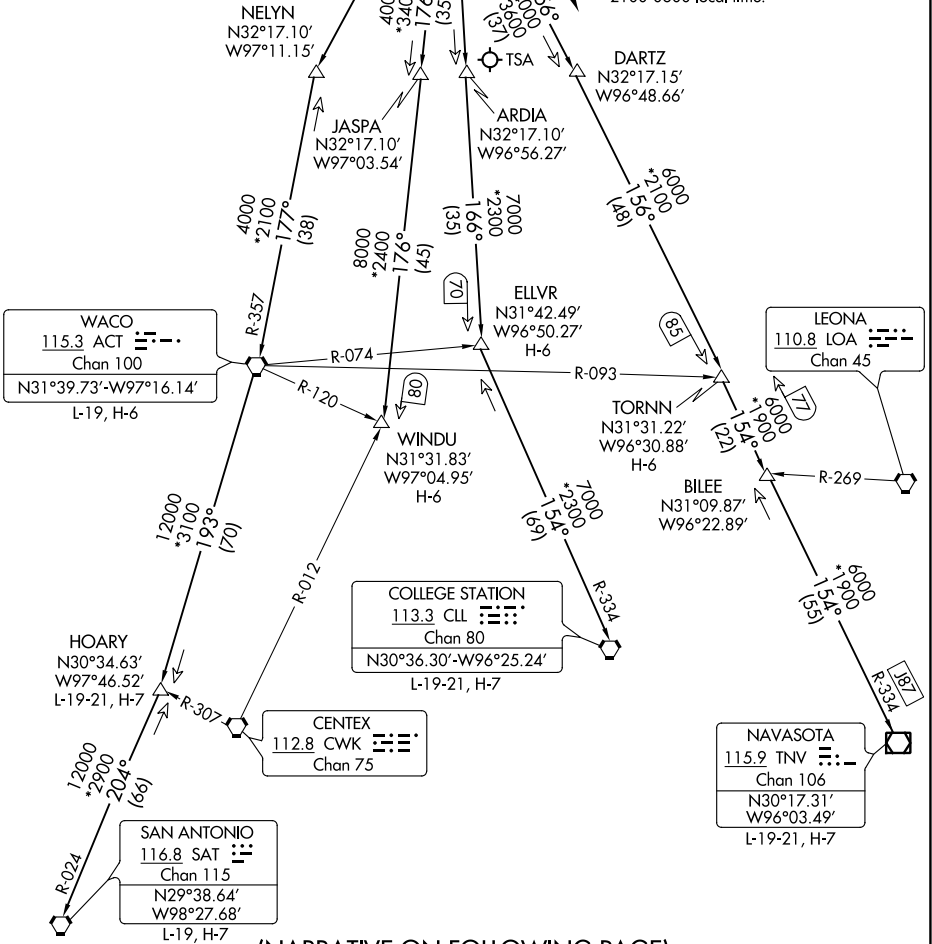
COWBOY
116.2 CVE
Chan 109

MAVERICK
113.1 TTT
Chan 78
N32°52.15'-W97°02.43'

TAKEOFF MINIMUMS

Rwys 13L, 18, 31L/R, 36: NA - Noise Abatement.
Rwy 13R: Standard with minimum climb of 320'
per NM to 1700.

NOTE: This DP is to be used only upon
assignment by Love tower normally between
2100-0600 local time.



SC-2, 23 MAR 2023 to 20 APR 2023

SC-2, 23 MAR 2023 to 20 APR 2023

(NARRATIVE ON FOLLOWING PAGE)
(NOTES CONTINUED ON FOLLOWING PAGE)

NOTE: Chart not to scale.