


APP CRS	Rwy Idg	<b>7352</b>
<b>133°</b>	TDZE	<b>485</b>
	Apt Elev	<b>487</b>

# RNAV (RNP) W RWY 13L

DALLAS LOVE FLD (DAL)

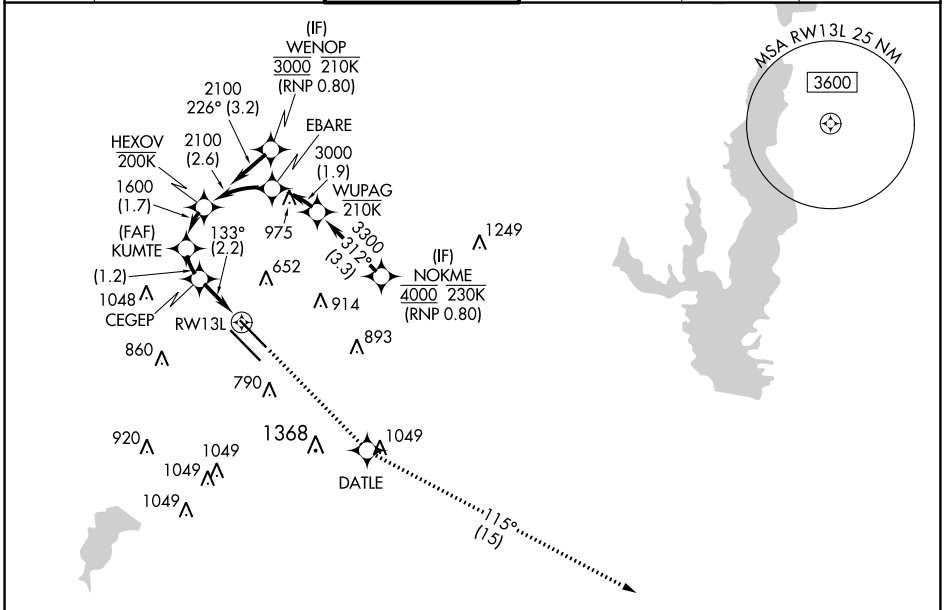
RNP AR APCH. RF required.

Simultaneous approach authorized. For uncompensated Baro-VNAV systems, procedure NA below -6°C or above 54°C. For inop ALS, increase RNP 0.11 all Cats visibility to RVR 4500.

MALSR 

MISSED APPROACH: Climb to 3000 direct DATLE and on track 115° to DUMPY and hold.

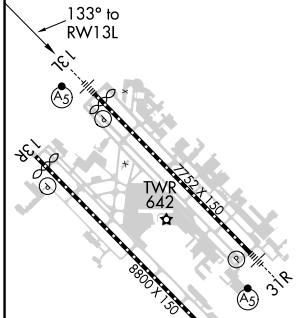
D-ATIS <b>120.15</b>	REGIONAL APP CON NORTH <b>124.3 282.275</b> SOUTH <b>125.2 343.65</b>	LOVE TOWER <b>123.7 239.3</b>	GND CON <b>121.75 348.6</b>	CLNC DEL <b>127.9</b>	CPDLC
-------------------------	---	----------------------------------	--------------------------------	--------------------------	-------



SC-2, 23 MAR 2023 to 20 APR 2023

SC-2, 23 MAR 2023 to 20 APR 2023

ELEV <b>487</b>	<b>D</b>	TDZE <b>485</b>
-----------------	----------	-----------------



TDZ/CL Rwy 13L and 31L  
HIRL Rwy 13L-31R, and 13R-31L

See planview for multiple IF locations.

HEXOV 2100	KUMTE 1600	CEGEP 1212	RWY13L	DUMPY
GP 3.00° TCH 40	1600	133°		
1.7 NM		1.2 NM		2.2 NM
3000	DATLE	tr 115°	DUMPY	

CATEGORY	A	B	C	D
RNP 0.11 DA	754/24		269 (300-½)	
RNP 0.30 DA	846/40		361 (400-¾)	

## AUTHORIZATION REQUIRED

# RNAV (RNP) W RWY 13L