

# NANDR ONE DEPARTURE (RNAV)

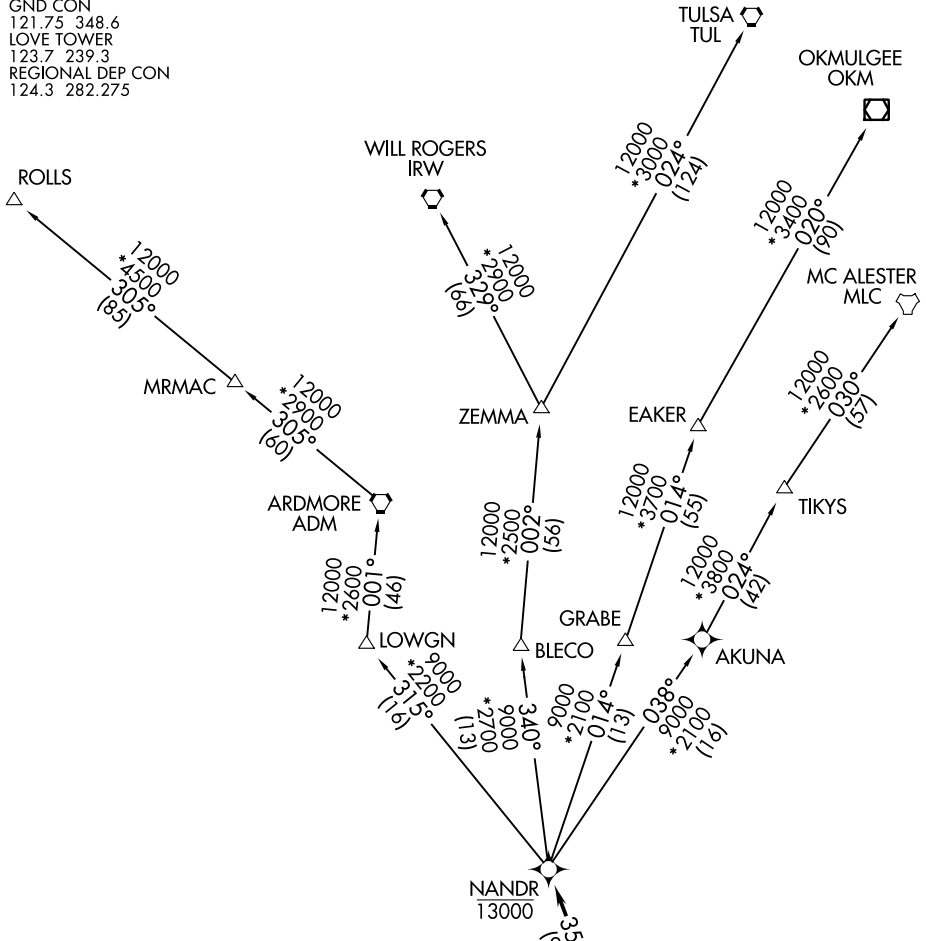
DALLAS, TEXAS

D-ATIS  
120.15  
CLNC DEL  
127.9  
CPDLC  
GND CON  
121.75 348.6  
LOVE TOWER  
123.7 239.3  
REGIONAL DEP CON  
124.3 282.275

RNAV 1 - DME/DME/IRU or GPS.

RADAR required.

**TOP ALTITUDE:**  
**RWYS 13L/R: 3000**  
**RWYS 31L/R: 2000**



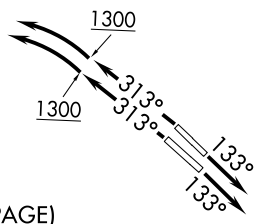
SC-2, 23 MAR 2023 to 20 APR 2023

SC-2, 23 MAR 2023 to 20 APR 2023

NOTE: Props only.

### TAKEOFF MINIMUMS

Rwys 31L/R: Standard.  
Rwy 13L: Standard with minimum climb of 290' per NM to 1700.  
Rwy 13R: Standard with minimum climb of 320' per NM to 1700.



NOTE: Chart not to scale.

(NARRATIVE ON FOLLOWING PAGE)

# NANDR ONE DEPARTURE (RNAV)

DALLAS, TEXAS