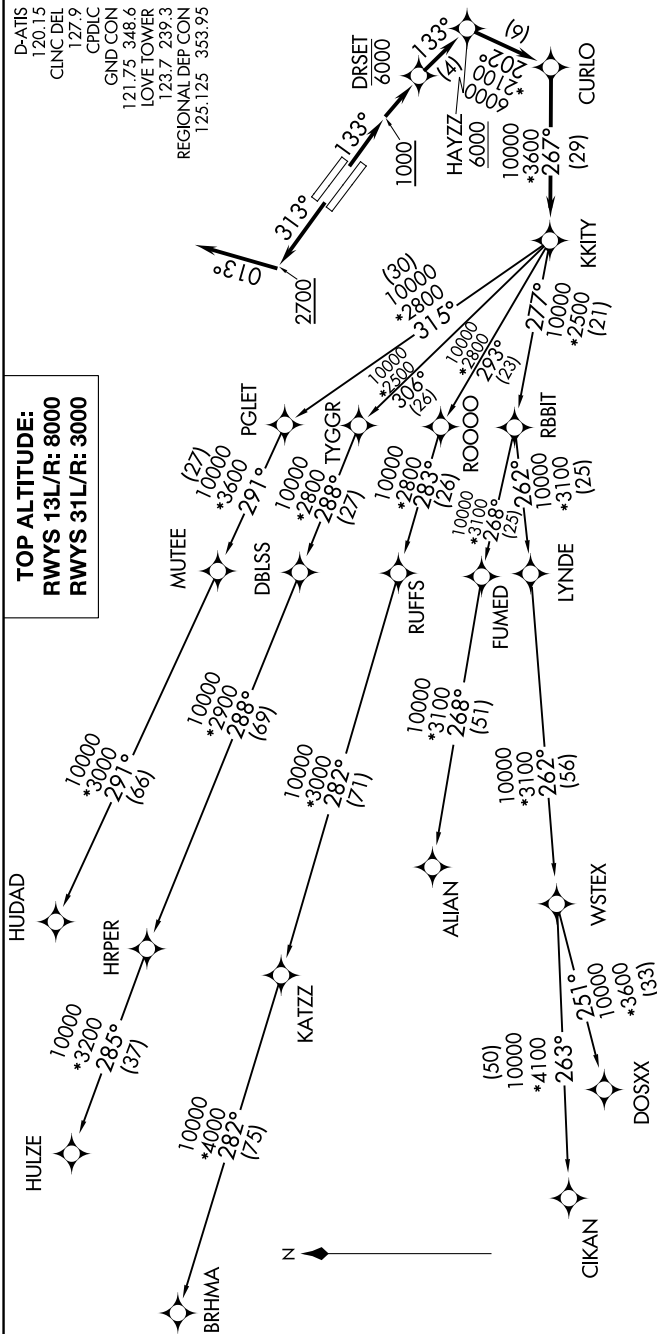


KKITY FIVE DEPARTURE (RNAV)

SC-2, 23 MAR 2023 to 20 APR 2023



TAKEOFF MINIMUMS
 Rwy 13L/R: Standard with minimum climb of 500' per NM to 1200.
 Rwy 31L/R: Standard with minimum climb of 500' per NM to 1000.

- NOTE: RADAR required.
- NOTE: DME/DME/IRU or GPS required.
- NOTE: RNAV 1.
- NOTE: For use by turbojet aircraft only.
- NOTE: RNAV-capable props: File and expect the SWABR RNAV SID.
- NOTE: ALIAN TRANSITION ATC assigned only.
- NOTE: BRHMA TRANSITION for aircraft inbound to Lubbock terminal area.
- NOTE: Use WORTH DEPARTURE during the period 2100-0600 local time in lieu of the KKITY DEPARTURE.
- NOTE: WSTEX TRANSITION: For aircraft inbound to Abilene and San Angelo terminal area airports only.

(NARRATIVE ON FOLLOWING PAGE)

NOTE: Chart not to scale.

KKITY FIVE DEPARTURE (RNAV)

SC-2, 23 MAR 2023 to 20 APR 2023