

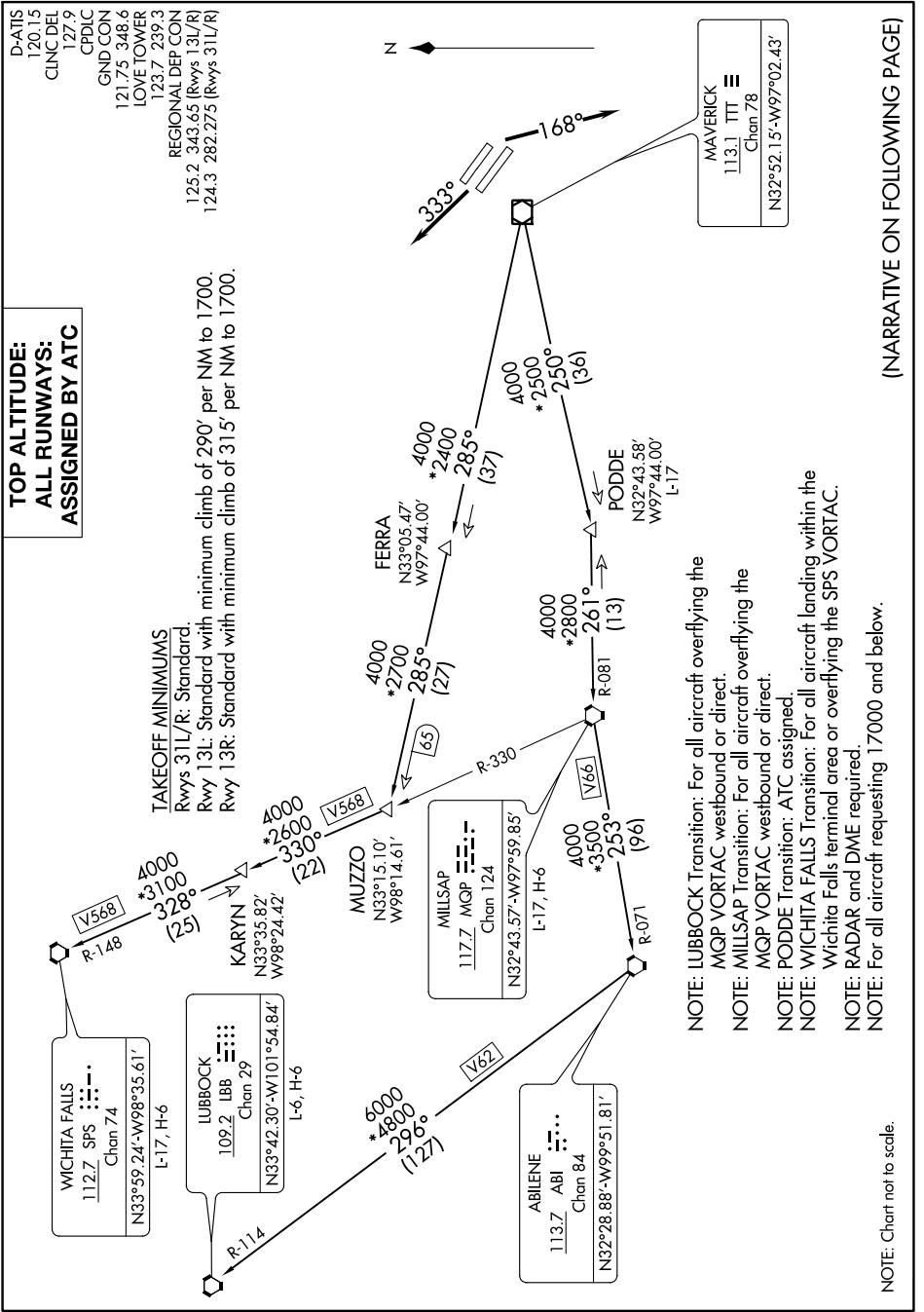
# KINGDOM THREE DEPARTURE

SC-2, 23 MAR 2023 to 20 APR 2023

**TOP ALTITUDE:  
ALL RUNWAYS:  
ASSIGNED BY ATC**

- D-ATIS 120.15
- CLINC DEL 127.9
- CPDLC
- GND CON 121.75 348.6
- LOVE TOWER 123.7 239.3
- REGIONAL DEP CON 125.2 343.65 (Rwys 13L/R)
- 124.3 282.275 (Rwys 31L/R)

**TAKEOFF MINIMUMS**  
Rwys 31L/R: Standard.  
Rwy 13L: Standard with minimum climb of 290' per NM to 1700.  
Rwy 13R: Standard with minimum climb of 315' per NM to 1700.



- NOTE: LUBBOCK Transition: For all aircraft overlying the MQP VORTAC westbound or direct.
- NOTE: MILLSAP Transition: For all aircraft overlying the MQP VORTAC westbound or direct.
- NOTE: PODDE Transition: ATC assigned.
- NOTE: WICHITA FALLS Transition: For all aircraft landing within the Wichita Falls terminal area or overlying the SPS VORTAC.
- NOTE: RADAR and DME required.
- NOTE: For all aircraft requesting 17000 and below.

NOTE: Chart not to scale.

(NARRATIVE ON FOLLOWING PAGE)

# KINGDOM THREE DEPARTURE

SC-2, 23 MAR 2023 to 20 APR 2023