

LOC/DME I-OVW <b>111.5</b> Chan 52	APP CRS <b>313°</b>	Rwy Idg TDZE Apt Elev	<b>6952</b> <b>487</b> <b>487</b>
--	------------------------	-----------------------------	---

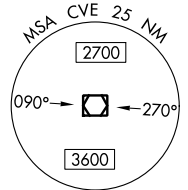
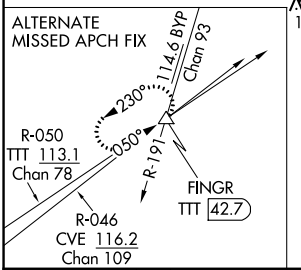
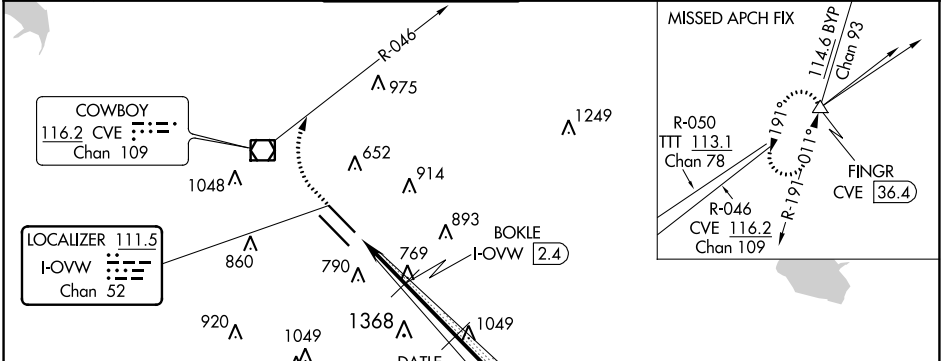
# ILS or LOC RWY 31R

DALLAS LOVE FLD (DAL)

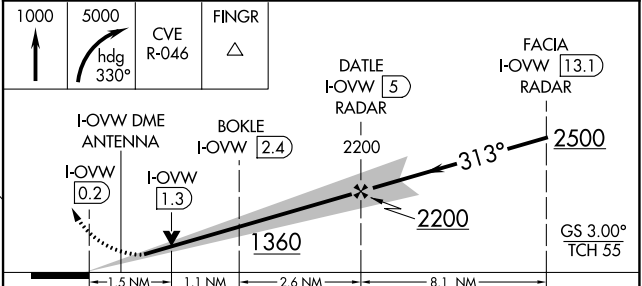
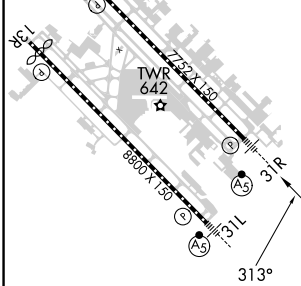
DME required.  
RADAR required for procedure entry.  
⚠ Simultaneous approach authorized.  
⚠ \*\* RVR 1800 authorized with use of FD or AP or HUD to DA.

MALSR  
MISSED APPROACH: Climb to 1000 then climbing right turn to 5000 on heading 330° and CVE VOR/DME R-046 to FINGR INT/CVE 36.4 DME and hold.

D-ATIS <b>120.15</b>	REGIONAL APP CON NORTH <b>124.3 282.275</b> SOUTH <b>125.2 343.65</b>	LOVE TOWER <b>123.7 239.3</b>	GND CON <b>121.75 348.6</b>	CLNC DEL <b>127.9</b>	CPDLC
-------------------------	---	----------------------------------	--------------------------------	--------------------------	-------



ELEV <b>487</b>	<b>D</b>	TDZE <b>487</b>
-----------------	----------	-----------------



TDZE/CL Rwy 13L and 31L  
HRL Rwy 13L-31R and 13R-31L  
FAF to MAP 5.2 NM

Knots	60	90	120	150	180
Min:Sec	5:12	3:28	2:36	2:05	1:44

CATEGORY	A	B	C	D
S-ILS 31R **	687/24 200 (200-½)			
S-LOC 31R	1020/24	533 (600-½)	1020/55	533 (600-1)
<input checked="" type="checkbox"/> CIRCLING	1020-1 533 (600-1)	1140-1 653 (700-1)	1220-2 733 (800-2)	1520-3 1033 (1100-3)

SC-2, 23 MAR 2023 to 20 APR 2023

SC-2, 23 MAR 2023 to 20 APR 2023