

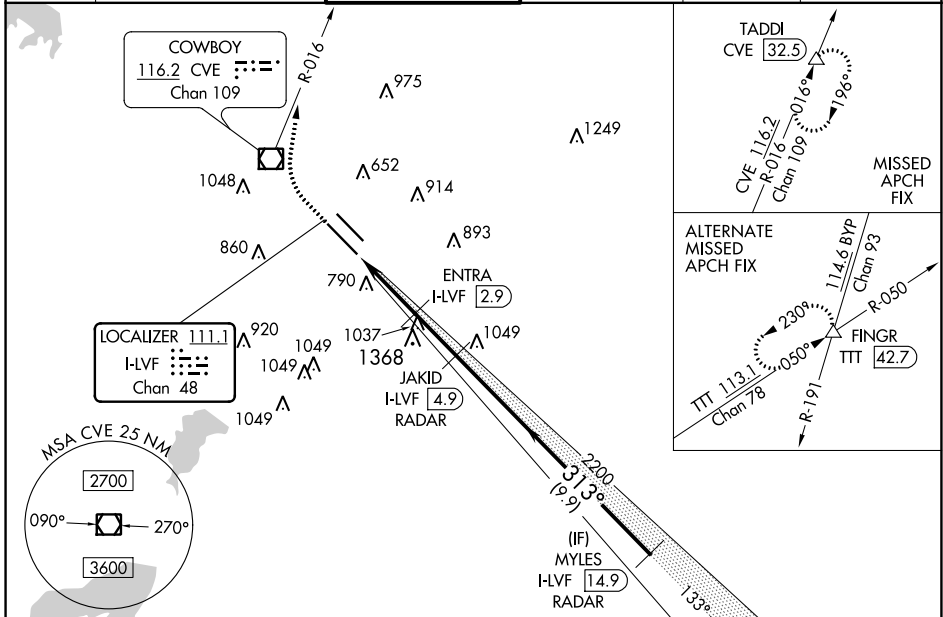
LOC/DME I-LVF 111.1 Chan 48	APP CRS 313°	Rwy Idg 8000 TDZE 477 Apt Elev 487
------------------------------------------	------------------------	---------------------------------------------------

ILS or LOC RWY 31L

DALLAS LOVE FLD (DAL)

DME required. RADAR required for procedure entry.	MALSR 	MISSED APPROACH: Climb to 4000 direct CVE VOR/DME and on CVE R-016 to TADDI/CVE 32.5 DME and hold.
Simultaneous approach authorized.		

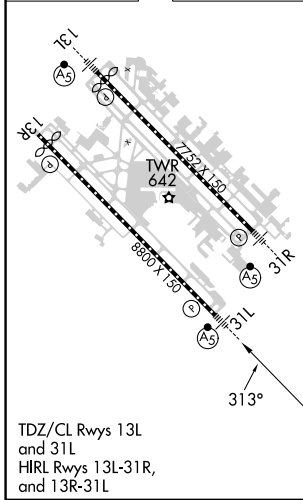
D-ATIS 120.15	REGIONAL APP CON NORTH 124.3 282.275 SOUTH 125.2 343.65	LOVE TOWER 123.7 239.3	GND CON 121.75 348.6	CLNC DEL 127.9	CPDLC
-------------------------	-----------------------------------------------------------------------------	----------------------------------	--------------------------------	--------------------------	-------



SC-2, 23 MAR 2023 to 20 APR 2023

SC-2, 23 MAR 2023 to 20 APR 2023

ELEV 487	D	TDZE 477
----------	----------	----------



TDZ/CL Rwy's 13L and 31L
HIRL Rwy's 13L-31R, and 13R-31L

4000	CVE	CVE R-016	TADDI	JAKID I-LVF 4.9 RADAR	MYLES I-LVF 14.9 RADAR
				2200	2500
	I-LVF DME ANTENNA	ENTRA I-LVF 2.9			
	I-LVF 0.2	I-LVF 2.3			
	1520	2200			
	2.5 NM	0.6 NM	2.1 NM	9.9 NM	
CATEGORY	A	B	C	D	
S-ILS 31L	677/18 200 (200-½)				
S-LOC 31L	1340/24 863 (900-½)	1340/40 863 (900-¾)	1340-2	863 (900-2)	
C CIRCLING	1340-1¼	853 (900-1¼)	1340-2½ 853 (900-2½)	1520-3 1033 (1100-3)	