

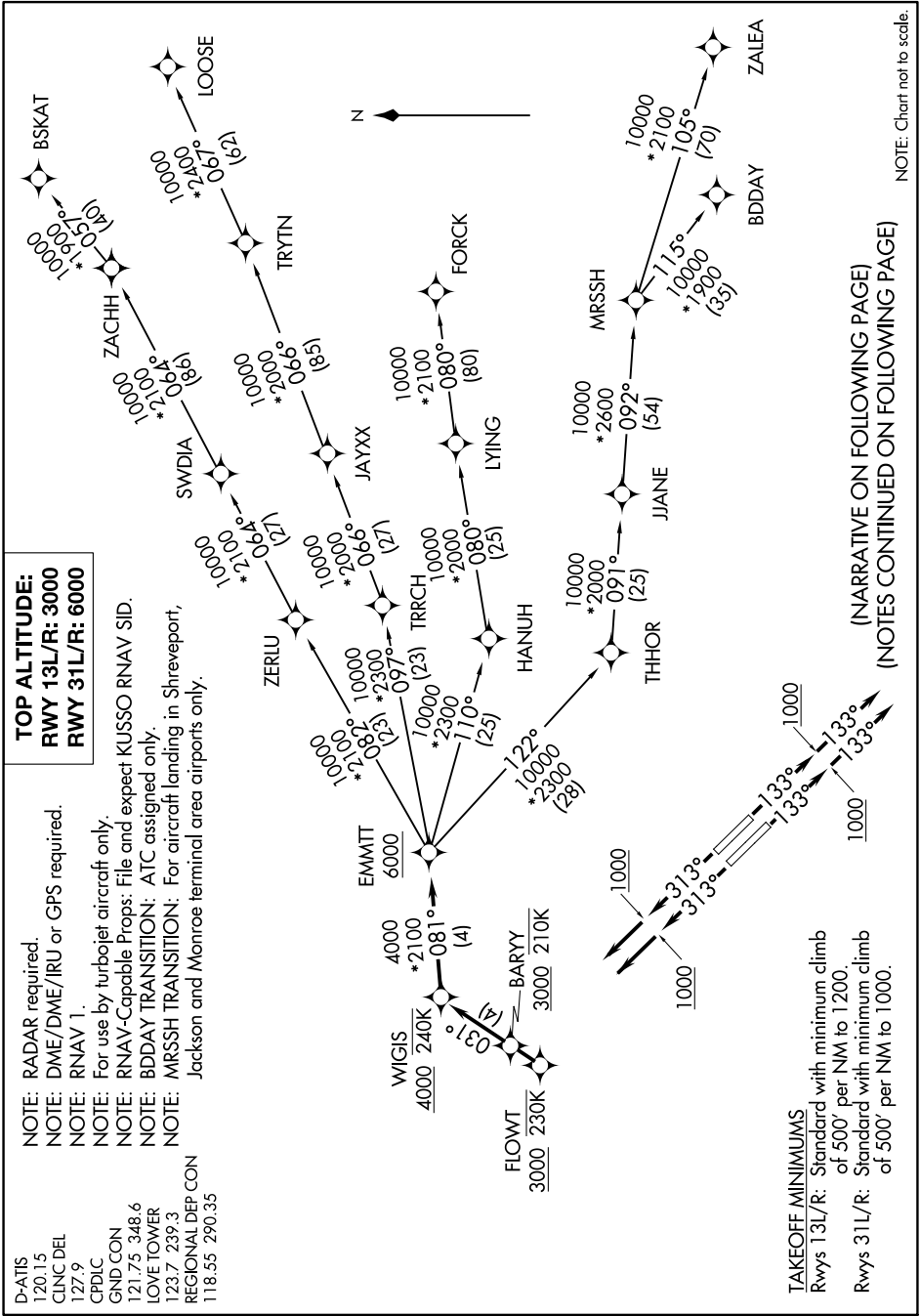
# EMMTT FOUR DEPARTURE (RNAV)

SC-2, 23 MAR 2023 to 20 APR 2023

D-ATIS 120.15  
 CLNC DEL 127.9  
 CPDLC  
 GND CON 121.75 348.6  
 LOVE TOWER 123.7 239.3  
 REGIONAL DEP CON 118.55 290.35

NOTE: RADAR required.  
 NOTE: DME/DME/IRU or GPS required.  
 NOTE: RNAV 1.  
 NOTE: For use by turbojet aircraft only.  
 NOTE: RNAV-Capable Props: File and expect KUSSO RNAV SID.  
 NOTE: BDDAY TRANSITION: ATC assigned only.  
 NOTE: MRSSH TRANSITION: For aircraft landing in Shreveport, Jackson and Monroe terminal area airports only.

**TOP ALTITUDE:**  
**RWY 13L/R: 3000**  
**RWY 31L/R: 6000**



**TAKEOFF MINIMUMS**  
 Rwy 13L/R: Standard with minimum climb of 500' per NM to 1200.  
 Rwy 31L/R: Standard with minimum climb of 500' per NM to 1000.

(NARRATIVE ON FOLLOWING PAGE)  
 (NOTES CONTINUED ON FOLLOWING PAGE)

NOTE: Chart not to scale.

SC-2, 23 MAR 2023 to 20 APR 2023