

WAAS CH 90105 W21A	APP CRS 206°	Rwy Idg TDZE 1486 Apt Elev 1503
--	------------------------	---

RNAV (GPS) RWY 21

ALTOONA/BLAIR COUNTY (A00)

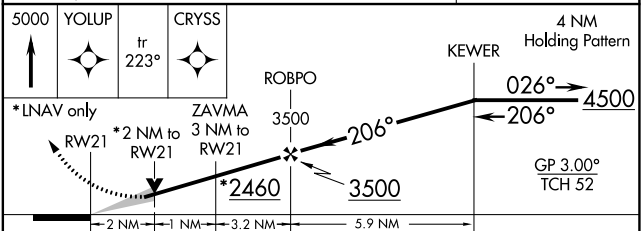
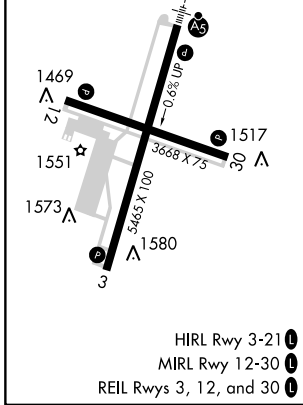
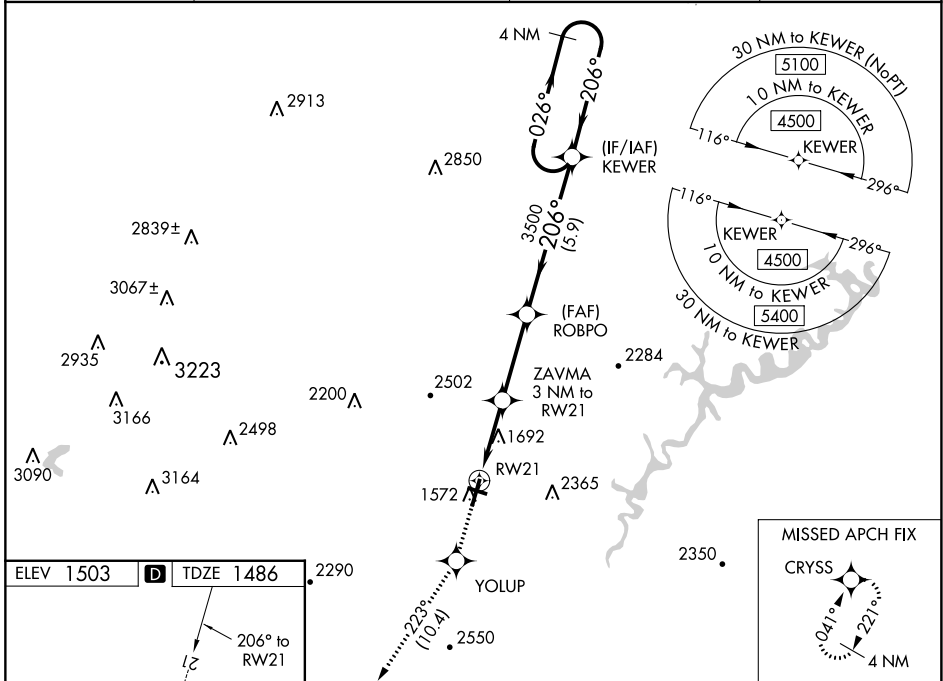
RNP APCH.

Baro-VNAV NA when using Bedford County altimeter setting. For uncompensated Baro-VNAV systems, LNAV/VNAV NA below -17°C or above 54°C. For inoperative ALS, increase LPV visibility all Cats to 1 1/2 SM. For inoperative ALS when using Bedford County altimeter setting, increase LPV and LNAV/VNAV all Cats visibility to 2 SM and increase LNAV Cats C/D visibility to 2 1/2 SM. When local altimeter setting not received, use Bedford County altimeter setting; increase all DA 84 feet and all MDA 100 feet. Increase all LPV and LNAV/VNAV visibilities 3/8 SM, LNAV Cats B, C and D and Circling Cat A 1/4 SM. Circling Rwy 3, 12, 30 NA at night.

MALSRL

MISSED APPROACH: Climb to 5000 direct YOLUP and on track 223° to CRYSS and hold, continue Climb-in-hold to 5000.

ASOS 127.125	JOHNSTOWN APP CON * 121.2 299.2	CTAF 123.60	UNICOM 123.0
------------------------	---	-----------------------	------------------------



CATEGORY	A	B	C	D
LPV DA		1977-1 1/8	491 (500-1 1/2)	
LNAV/VNAV DA		1999-1 1/4	513 (500-1 1/4)	
LNAV MDA	2160-1/2	674 (700-1/2)	2160-1 1/2	674 (700-1 1/2)
C CIRCLING	2240-1 737 (800-1)	2240-1 1/4 737 (800-1 1/4)	2800-3 1297 (1300-3)	2840-3 1337 (1400-3)

NE-4, 23 MAR 2023 to 20 APR 2023

NE-4, 23 MAR 2023 to 20 APR 2023