

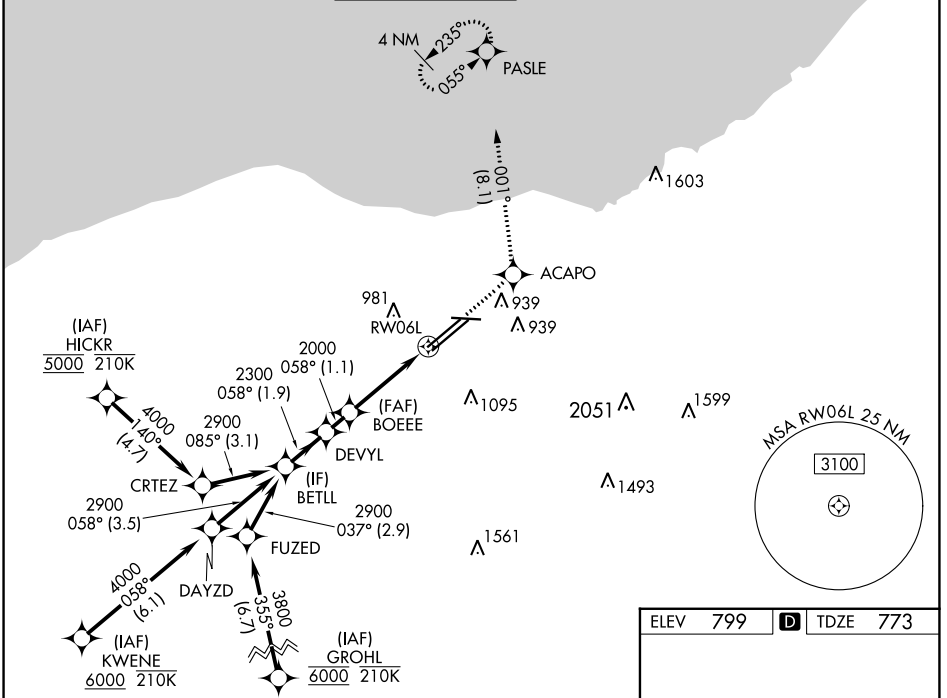
|  |                        |   |
|--|------------------------|---|
| WAAS<br>CH <b>56204</b><br><b>W06A</b> | APP CRS<br><b>058°</b> | Rwy Idg <b>9000</b><br>TDZE <b>773</b><br>Apt Elev <b>799</b> |
|--|------------------------|---|

# RNAV (GPS) Y RWY 6L

CLEVELAND-HOPKINS INTL (CLE)

|   |            |  |
|---|------------|--|
| RNP APCH.   | ALSF-2<br> | MISSED APPROACH: Climb to 3000 direct ACAPO and on track 001° to PASLE and hold. |
| <p><b>▼</b> For uncompensated Baro-VNAV systems, LNAV/VNAV NA below -18°C (0°F) or above 54°C (130°F). Circling Rwy 10 NA at night. For inop ALS, increase LNAV/VNAV all Cats visibility to RVR 5500 and increase LNAV Cats C/D visibility to 1 3/8 SM.</p> |            |  |

|   |  |  |                                |                                  |       |
|---|--|--|--------------------------------|----------------------------------|-------|
| D-ATIS<br>ARR <b>127.85</b><br>DEP <b>132.375</b> | CLEVELAND APP CON<br><b>126.55 346.325</b> | CLEVELAND TOWER<br><b>124.5 273.45</b> | GND CON<br><b>121.7 273.45</b> | CLNC DEL<br><b>125.05 273.45</b> | CPDLC |
|---|--|--|--------------------------------|----------------------------------|-------|



EC-2, 23 MAR 2023 to 20 APR 2023

EC-2, 23 MAR 2023 to 20 APR 2023

|  |                       |        |                            |        |
|--|-----------------------|--------|----------------------------|--------|
| VGSi and RNAV glidepath not coincident (VGSi Angle 3.00/TCH 69). |                       | 3000   | ACAPO                      | PASLE  |
| BETLL  |                       | ↑      |                            |        |
| 2900   |                       |        | tr                         | 001°   |
| 058°   |                       |        | *LNAV only.                |        |
| DEVYL  |                       |        | *1.3 NM to RW06L           | RW06L  |
| 2300   |                       |        |                            |        |
| BOEEE  |                       |        |                            |        |
| 2000   |                       |        |                            |        |
| GP 3.00°   |                       |        |                            |        |
| TCH 55   |                       |        |                            |        |
| 1.9 NM   |                       | 1.1 NM | 2.4 NM                     | 1.3 NM |
| CATEGORY   | A                     | B      | C                          | D      |
| LPV DA   | 973/18                |        | 200 (200-1/2)              |        |
| LNAV/VNAV DA   | 1120/30               |        | 347 (400-5/8)              |        |
| LNAV MDA   | 1260/24 487 (500-1/2) |        | 1260/50 487 (500-1)        |        |
| <b>C</b> CIRCLING  | 1420-1 621 (700-1)    |        | 1420-1 3/4 621 (700-1 3/4) |        |
|  |                       |        | 1420-2 621 (700-2)         |        |

