

LOC/DME I-PXP <b>110.7</b> Chan <b>44</b>	APP CRS <b>281°</b>	Rwy Idg TDZE <b>799</b> Apt Elev <b>799</b>	<b>6018</b>
---	------------------------	---	-------------

# ILS or LOC RWY 28

CLEVELAND-HOPKINS INTL (CLE)

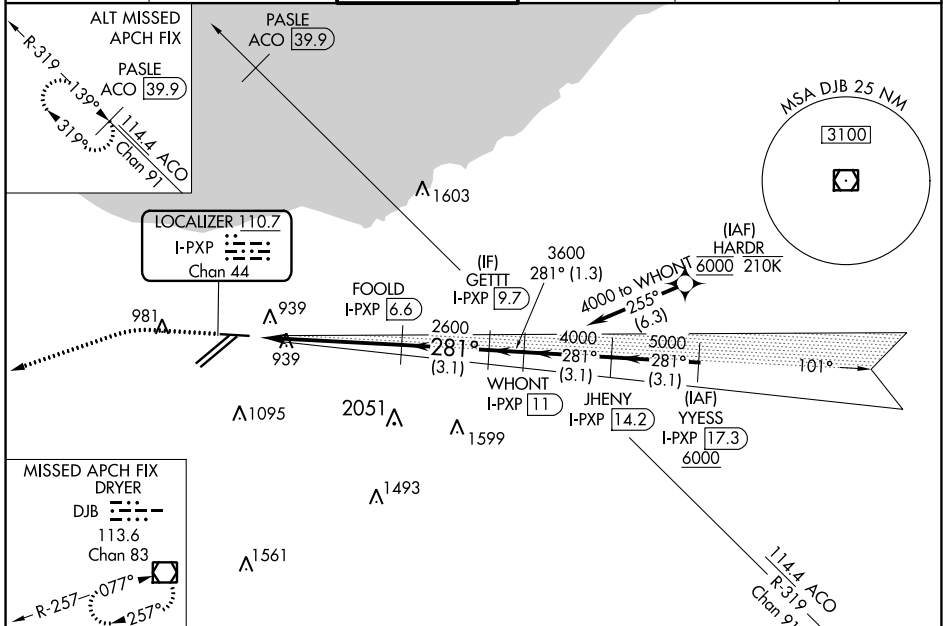
RNAV 1. From HARDR: RNAV 1-DME/DME/IRU or GPS required for procedure entry.  
Aircraft not DME/DME/IRU or GPS equipped - RADAR required for procedure entry.  
DME required.

▼ Circling Rwy 10 NA at night. Inop table does not apply to S-ILS 28.

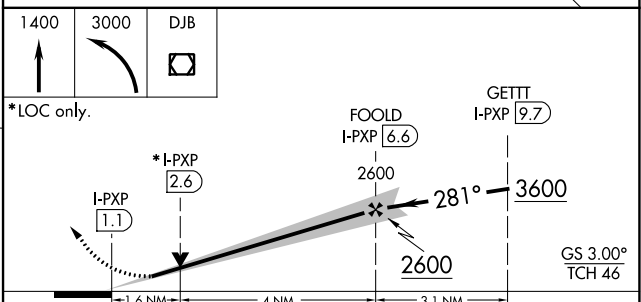
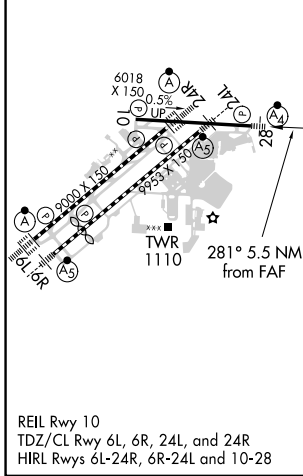
MALSF

MISSED APPROACH: Climb to 1400 then climbing left turn to 3000 direct DJB VOR/DME and hold.

D-ATIS ARR <b>127.85</b> DEP <b>132.375</b>	CLEVELAND APP CON <b>126.55 346.325</b>	CLEVELAND TOWER <b>124.5 273.45</b>	GND CON <b>121.7 273.45</b>	CLNC DEL <b>125.05 273.45</b>	CPDLC
---	--	--	--------------------------------	----------------------------------	-------



ELEV 799	<b>D</b>	TDZE 799
----------	----------	----------



CATEGORY	A	B	C	D
S-ILS 28	999/40		200 (200-¾)	
S-LOC 28	1340/40	541 (600-¾)	1340-1¾	541 (600-1¾)
<b>C</b> CIRCLING	1420-1	621 (700-1)	1420-1¾	1420-2
			621 (700-1¾)	621 (700-2)

EC-2, 23 MAR 2023 to 20 APR 2023

EC-2, 23 MAR 2023 to 20 APR 2023