

WAAS CH <b>58200</b> <b>W12A</b>	APP CRS <b>123°</b>	Rwy Idg <b>10201</b> TDZE <b>1359</b> Apt Elev <b>1384</b>
--	------------------------	--

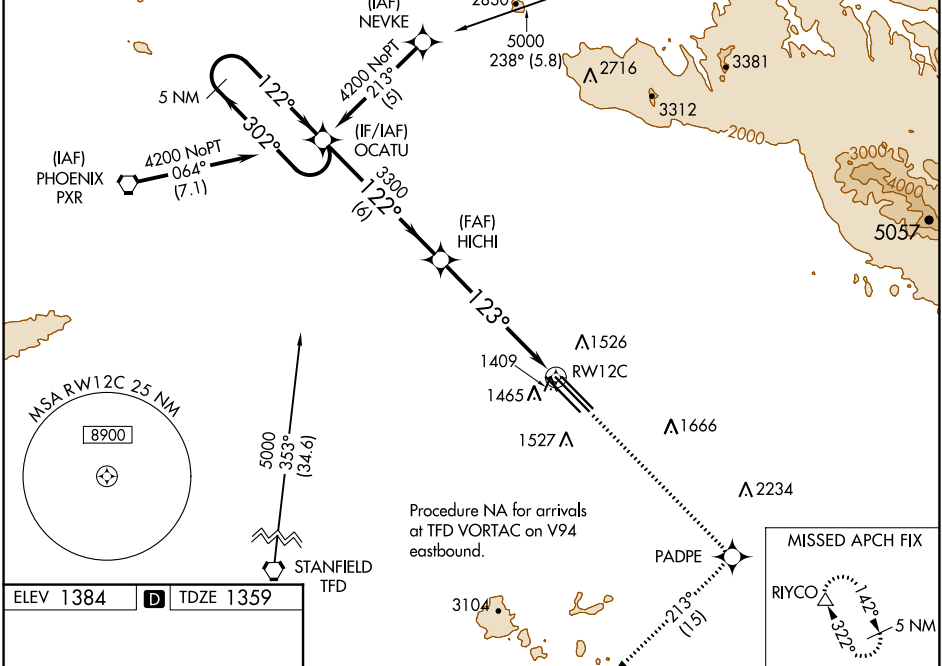
# RNAV (GPS) RWY 12C

PHOENIX-MESA GATEWAY (IWA)

**⚠** DME/DME RNP-0.3 NA.  
**⚠** For uncompensated Baro-VNAV systems LNAV/VNAV NA below -17°C (2°F) or above 46°C (115°F).  
 MISSED APPROACH: Climb to 5000 direct PADPE and on 213° track to RIYCO and hold.

ATIS ★ <b>133.5 270.275</b>	PHOENIX APP CON <b>124.9 353.8</b>	GATEWAY TOWER ★ <b>120.6 (CTAF) 289.4</b>	GND CON <b>128.25 275.8</b>	CLNC DEL <b>135.05</b>
--------------------------------	---------------------------------------	--	--------------------------------	---------------------------

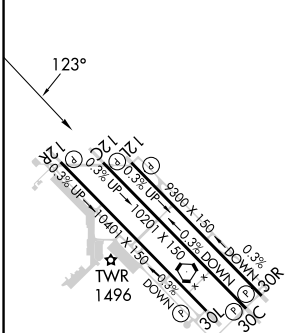
Procedure NA for arrivals on PXR VORTAC airway radials 321, CW 143.



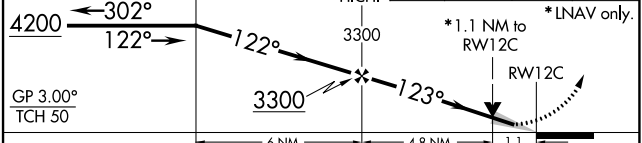
SW-4, 23 MAR 2023 to 20 APR 2023

SW-4, 23 MAR 2023 to 20 APR 2023

ELEV 1384	<b>D</b>	TDZE 1359
-----------	----------	-----------



5 NM Holding Pattern	OCATU	5000	PADPE	213° tr	RIYCO
----------------------	-------	------	-------	---------	-------



GP 3.00° TCH 50					
CATEGORY	A	B	C	D	E
LPV DA	1609-1 250 (300-1)				
LNAV/VNAV DA	1686-1¼ 327 (400-1¼)				
LNAV MDA	1740-1 381 (400-1)		1740-1¼ 381 (400-1¼)		
CIRCLING	1840-1¼ 456 (500-1¼)	1880-1½ 496 (500-1½)	2000-2 616 (700-2)	2020-2¼ 636 (700-2¼)	

MIRL Rwy 12R-30L  
 HIRL Rwys 12L-30R and 12C-30C  
 REL Rwys 12L and 30R