

LOC I-SYD <b>111.3</b>	APP CRS <b>032°</b>	Rwy ldg TDZE Apt Elev	<b>10165</b> <b>5328</b> <b>5344</b>
---------------------------	------------------------	-----------------------------	--

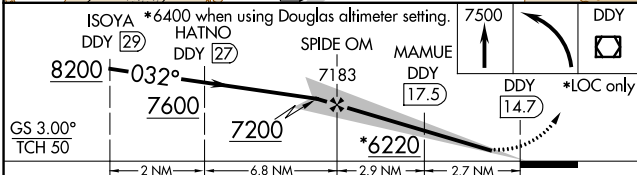
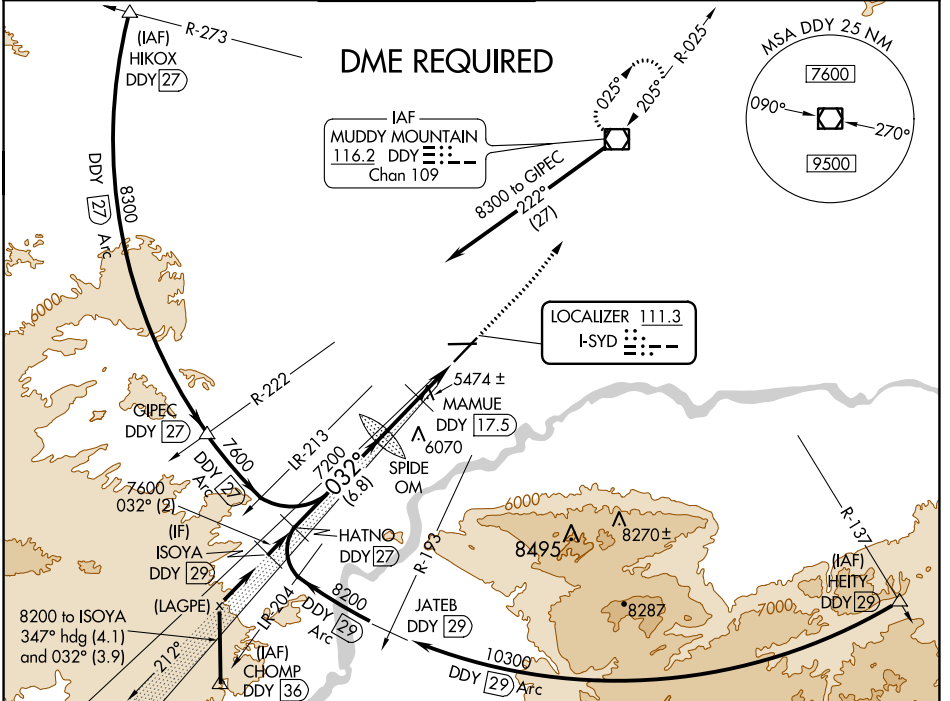
# ILS or LOC RWY 3

CASPER/NATRONA COUNTY INTL (CPR)

**▽** DME from DDY VOR/DME. Simultaneous reception of I-SYD and DDY DME required. When local altimeter setting not received, use Douglas altimeter setting and increase DA to 5697 feet and all MDAs 180 feet, increase S-ILS visibility all Cats ¼ SM and S-LOC visibility Cat B, C, D and Circling Cats B, C, D visibility ½ SM, increase MAMUE FIX MINIMUM Circling visibility Cat C ½ SM and Cat D ¼ SM. For inoperative MALSRS when using Douglas altimeter setting increase S-ILS visibility all Cats to 1½ mile. MAMUE FIX MINIMUMS: For inoperative MALSRS, increase S-LOC visibility Cats C, and D to 1½ mile. #RVR 1800 authorized with use of FD or HUD to DA.

**MALSRS**  
MISSED APPROACH:  
Climb to 7500  
then left turn direct  
DDY VOR/DME  
and hold.

ATIS <b>126.15</b>	CASPER APP CON * <b>120.65 354.1</b>	CASPER TOWER * <b>118.3 (CTAF) 257.8</b>	GND CON <b>121.9</b>	CLNC DEL <b>121.9 257.8</b>	UNICOM <b>122.95</b>
-----------------------	---	---	-------------------------	--------------------------------	-------------------------



ELEV 5344	TDZE 5328
REIL Rwy 21 HIRL Rwy 3-21 and 8-26	
FAF to MAP 5.6 NM	
Knots	60 90 120 150 180
Min:Sec	5:36 3:44 2:48 2:14 1:52

CATEGORY	A	B	C	D
S-ILS 3	#5528/24 200 (200-½)			
S-LOC 3	6220/40	892 (900-¾)	6220-2	892 (900-2)
CIRCLING	6220-1¼	876 (900-1¼)	6220-2½ 876 (900-2½)	6220-2¾ 876 (900-2¾)
MAMUE FIX MINIMUMS				
S-LOC 3	5740/24	412 (400-½)	5740/40	412 (400-¾)
CIRCLING	5740-1 396 (400-1)	5800-1 456 (500-1)	5860-1½ 516 (600-1½)	6200-2¾ 856 (900-2¾)

NW-1, 23 MAR 2023 to 20 APR 2023

NW-1, 23 MAR 2023 to 20 APR 2023