

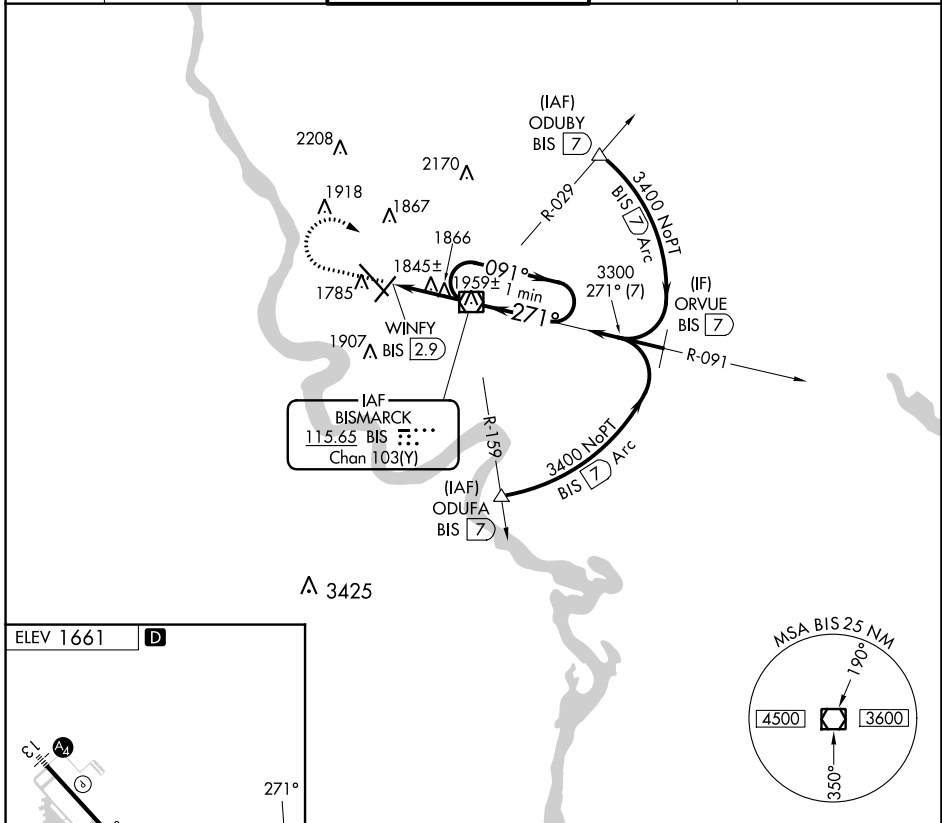
VOR/DME BIS 115.65 Chan 103(Y)	APP CRS 271°	Rwy ldg TDZE Apt Elev N/A N/A 1661
--	------------------------	--

VOR-A

BISMARCK MUNI (BIS)

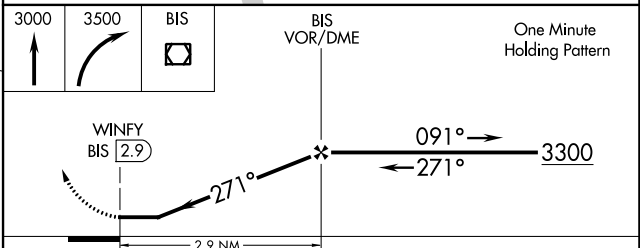
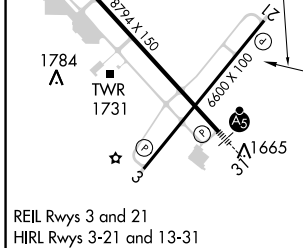
ASR	MISSED APPROACH: Climb to 3000 then climbing right turn to 3500 direct BIS VOR/DME and hold.
------------	--

ATIS 119.35	BISMARCK APP CON * 126.3 298.9	BISMARCK TOWER * 118.3 (CTAF) 0 257.8	GND CON 121.9	UNICOM 122.95
-----------------------	--	---	-------------------------	-------------------------



NC-1, 23 MAR 2023 to 20 APR 2023

NC-1, 23 MAR 2023 to 20 APR 2023



FAF to MAP 2.9 NM					
Knots	60	90	120	150	180
Min:Sec	2:54	1:56	1:27	1:10	0:58
CIRCLING	2200-1 539 (600-1)		2460-2¼ 799 (800-2¼)	2460-2½ 799 (800-2½)	