

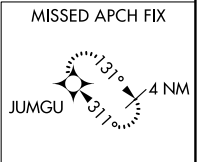
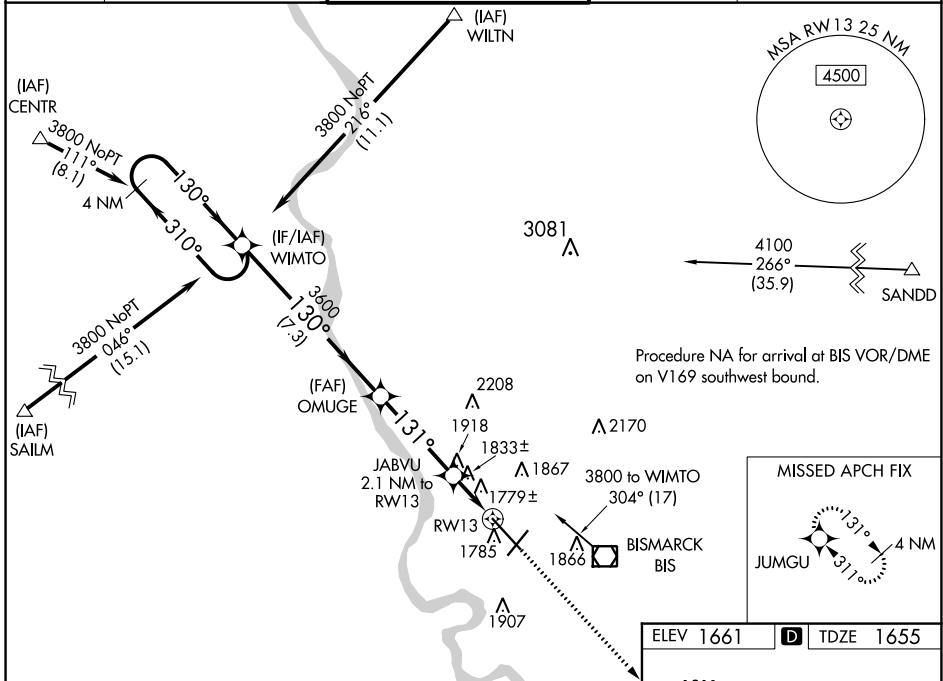
WAAS CH 86920 W13A	APP CRS 131°	Rwy Idg 8794 TDZE 1655 Apt Elev 1661
--	------------------------	---

RNAV (GPS) RWY 13

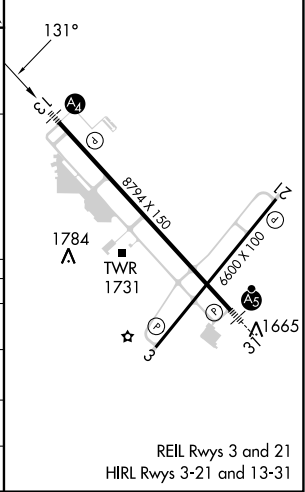
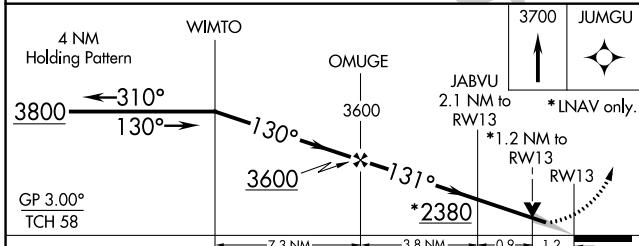
BISMARCK MUNI (BIS)

 	Inoperative table does not apply. For uncompensated Baro-VNAV systems, LNAV/VNAV NA below -18°C (0°F) or above 33°C (91°F). DME/DME RNP-0.3 NA.	MALS 	MISSED APPROACH: Climb to 3700 direct JUMGU and hold.

ATIS 119.35	BISMARCK APP CON * 126.3 298.9	BISMARCK TOWER * 118.3 (CTAF) 0 257.8	GND CON 121.9	UNICOM 122.95
-----------------------	--	---	-------------------------	-------------------------



ELEV 1661	D	TDZE 1655
-----------	----------	-----------



CATEGORY	A	B	C	D
LPV DA	1855- ³ / ₄		200 (200- ³ / ₄)	
LNAV/VNAV DA	2083-1 ³ / ₈		428 (500-1 ³ / ₈)	
LNAV MDA	2100-1	445 (500-1)	2100-1 ³ / ₈	445 (500-1 ³ / ₈)
C CIRCLING	2200-1	539 (600-1)	2460-2 ¹ / ₄ 799 (800-2 ¹ / ₄)	2460-2 ¹ / ₂ 799 (800-2 ¹ / ₂)

NC-1, 23 MAR 2023 to 20 APR 2023

NC-1, 23 MAR 2023 to 20 APR 2023

REIL Rws 3 and 21
HIRL Rws 3-21 and 13-31