

# IZZYY ONE DEPARTURE (RNAV) (IZZYY1•IZZYY)

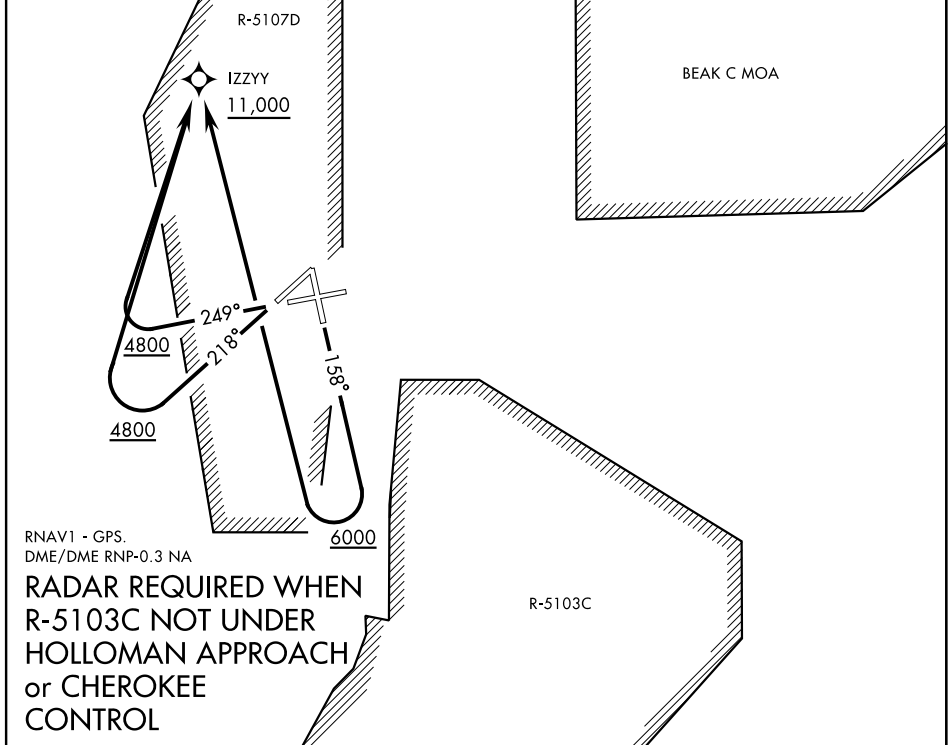
ALAMOGORDO, NEW MEXICO

ATIS ★ 273.5  
 CLNC DEL  
 126.7 289.4  
 GND CON  
 127.05 275.8  
 TOWER ★  
 119.3 254.4  
 DEP CON  
 128.1 284.0  
 ALBUQUERQUE CENTER  
 132.65 257.6

AL-7 [USAF]

Rwy	Knots	60	120	180	240	300	360
16	V/V(fpm)	425	850	1275	1700	2125	2550
22	V/V(fpm)	416	832	1248	1664	2080	2496
25	V/V(fpm)	480	960	1440	1920	2400	2880

Minimum climb to 11,000



RNAV1 - GPS  
 DME/DME RNP-0.3 NA

**RADAR REQUIRED WHEN  
 R-5103C NOT UNDER  
 HOLLOMAN APPROACH  
 or CHEROKEE  
 CONTROL**

## DEPARTURE ROUTE DESCRIPTION

**TAKEOFF RWY 16:** Climb on track 158° when leaving 6000 turn right direct IZZYY, then via assigned routing. Cross IZZYY at or above 11,000.

**TAKEOFF RWY 22:** Climb on track 218° when leaving 4800 turn right direct IZZYY, then via assigned routing. Cross IZZYY at or above 11,000.

**TAKEOFF RWY 25:** Climb on track 249° when leaving 4800 turn right direct IZZYY, then via assigned routing. Cross IZZYY at or above 11,000.

# IZZYY ONE DEPARTURE (RNAV) (IZZYY1•IZZYY)

ALAMOGORDO, NEW MEXICO

SW-1, 23 MAR 2023 to 20 APR 2023

SW-1, 23 MAR 2023 to 20 APR 2023