

APP CRS 228°	Rwy Idg 4300
	TDZE 2864
	Apt Elev 2869

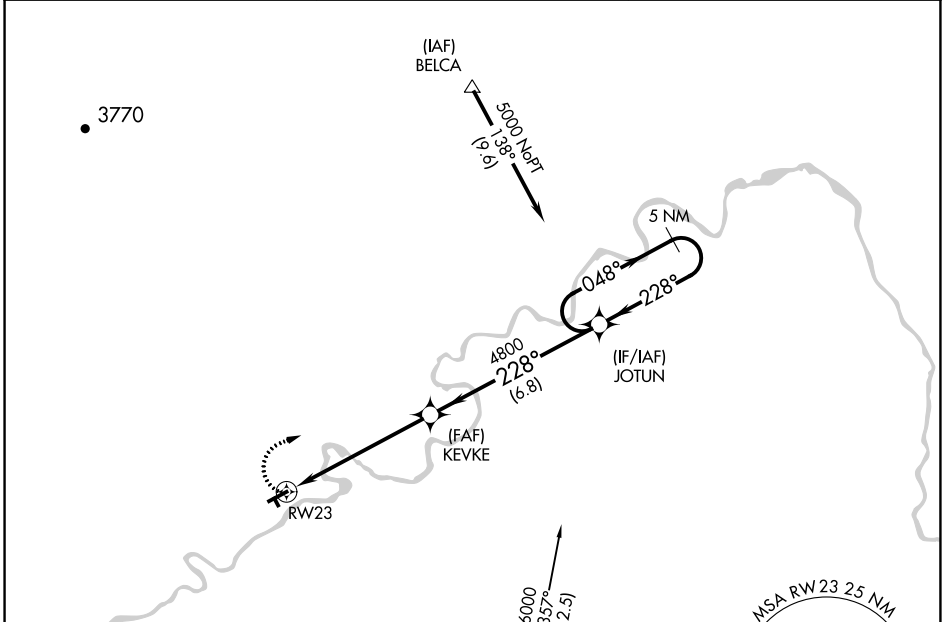
RNAV (GPS) RWY 23

FORT BENTON (79S)

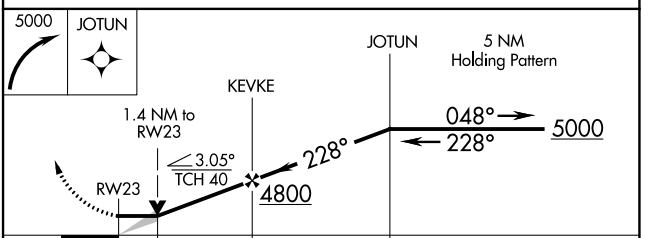
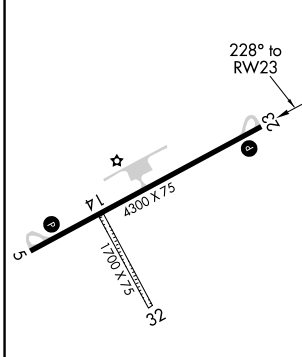
⚠ DME/DME RNP-0.3 NA. Procedure NA at night. When local altimeter setting not received, use Great Falls altimeter setting and increase all MDAs 200 feet and LNAV visibility Cat C ½ SM, and Circling visibility Cat C ¾ SM. Circling NA to Rwy 14-32.

⚠ MISSED APPROACH: Climbing right turn to 5000 direct JOTUN and hold.

AWOS-A 122.8	SALT LAKE CENTER 133.4 285.4	UNICOM 122.8 (CTAF)
------------------------	--	-------------------------------



ELEV 2869	TDZE 2864
-----------	-----------



CATEGORY	A	B	C	D
LNAV MDA	3340-1	476 (500-1)	3340-1¼ 476 (500-1¼)	NA
CIRCLING	3340-1	471 (500-1)	3460-1½ 591 (600-1½)	NA

NW-1, 23 FEB 2023 to 23 MAR 2023

NW-1, 23 FEB 2023 to 23 MAR 2023