

APP CRS	Rwy Idg	N/A
299°	TDZE	N/A
	Apt Elev	654

# RNAV (GPS)-B

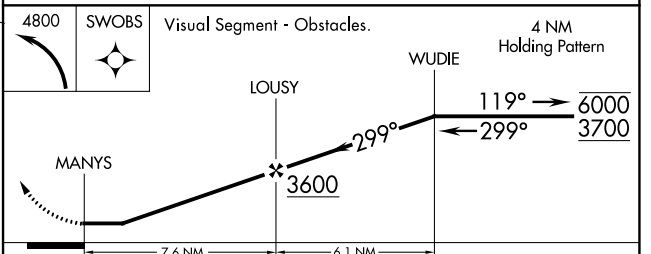
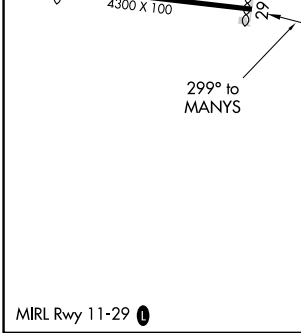
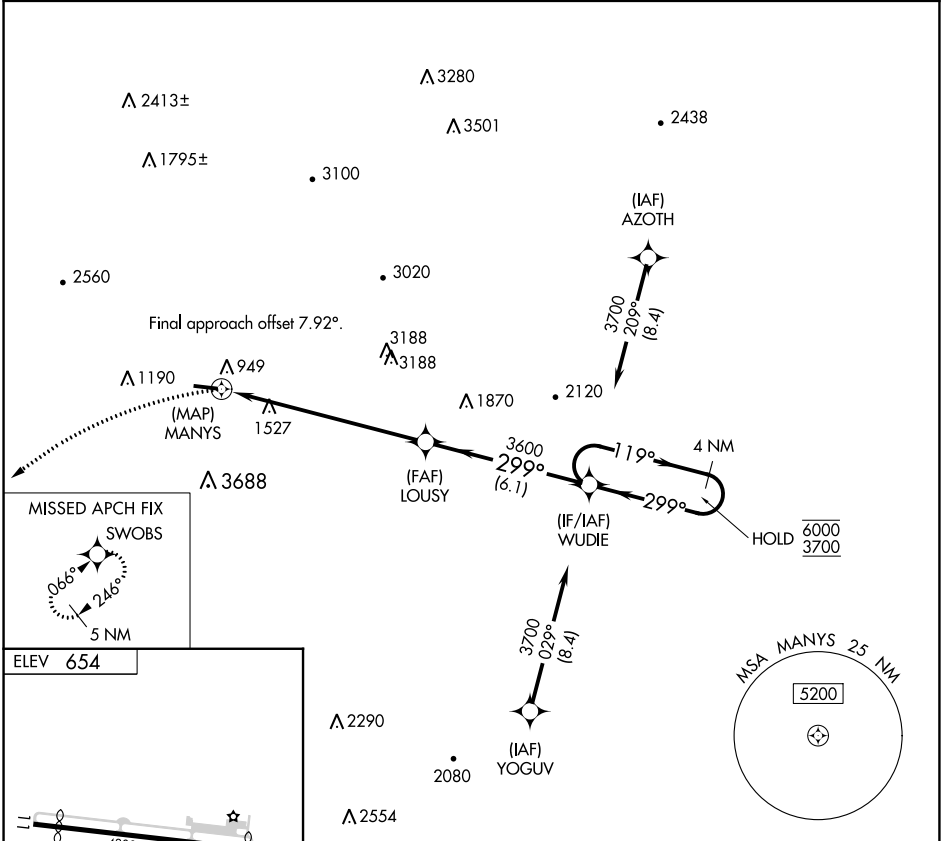
HARRIMAN-AND-WEST (A.Q.W)

RNP APCH.

**⚠** Circling NA south of Rwy 11-29. Procedure NA at night.  
**⚠** Rwy 29 helicopter visibility reduction below 1 SM NA.

MISSED APPROACH: Climbing left turn to 4800 direct SWOBS and hold.

ASOS <b>134.775</b>	ALBANY APP CON <b>132.825 307.2</b>	UNICOM <b>122.8</b> (CTAF) <b>0</b>
------------------------	--	--



CATEGORY	A	B	C	D
<b>0</b> CIRCLING	3280-1¼ 2626 (2700-1¼)	3280-1½ 2626 (2700-1½)	3280-3 2626 (2700-3)	NA

NE-1, 23 FEB 2023 to 23 MAR 2023

NE-1, 23 FEB 2023 to 23 MAR 2023