

WAAS CH <b>65645</b> <b>W18A</b>	APP CRS <b>178°</b>	Rwy Idg TDZE <b>1131</b> Apt Elev <b>1131</b>
--	------------------------	---

# RNAV (GPS) RWY 18

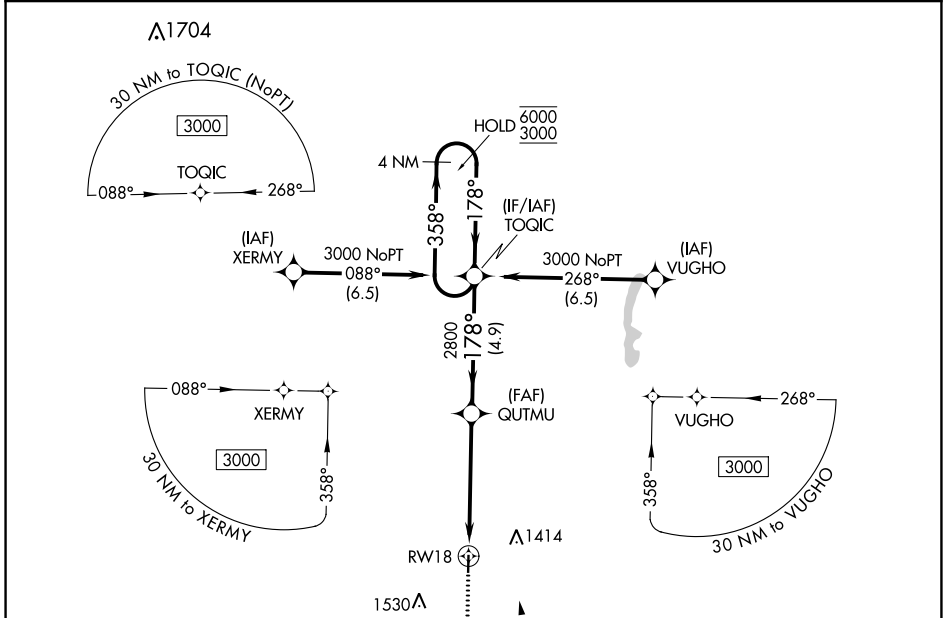
LAMONI MUNI (LWD)

RNP APCH-GPS.

**⚠** Circling NA west of Rwy 18-36. Rwy 18 helicopter visibility reduction below  $\frac{3}{4}$  SM NA. For uncompensated Baro-VNAV systems, LNAV/VNAV NA below -21°C or above 54°C.

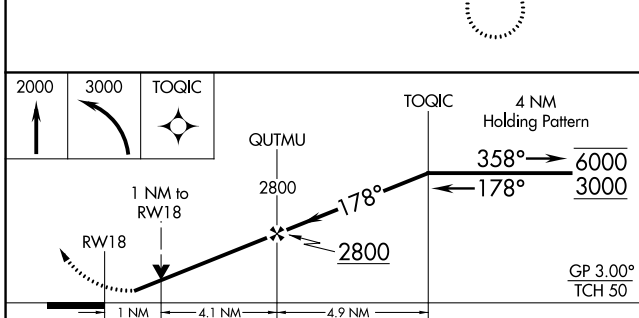
MISSED APPROACH: Climb to 2000, then climbing left turn 3000 direct TOQIC and hold.

ASOS <b>120.0</b>	MINNEAPOLIS CENTER <b>125.65 306.95</b>	CTAF <b>122.9</b> <b>0</b>
----------------------	--	-------------------------------



NC-3, 23 FEB 2023 to 23 MAR 2023

NC-3, 23 FEB 2023 to 23 MAR 2023



CATEGORY	A	B	C	D
LPV DA		1381-1	250 (300-1)	
LNAV/VNAV DA		1381-1	250 (300-1)	
LNAV MDA		1500-1	369 (400-1)	
<b>C</b> CIRCLING	1520-1 389 (400-1)	1720-1 589 (600-1)	1720-1½ 589 (600-1½)	1720-2 589 (600-2)

