

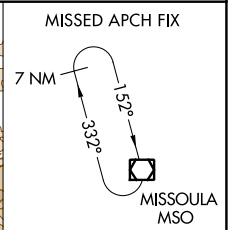
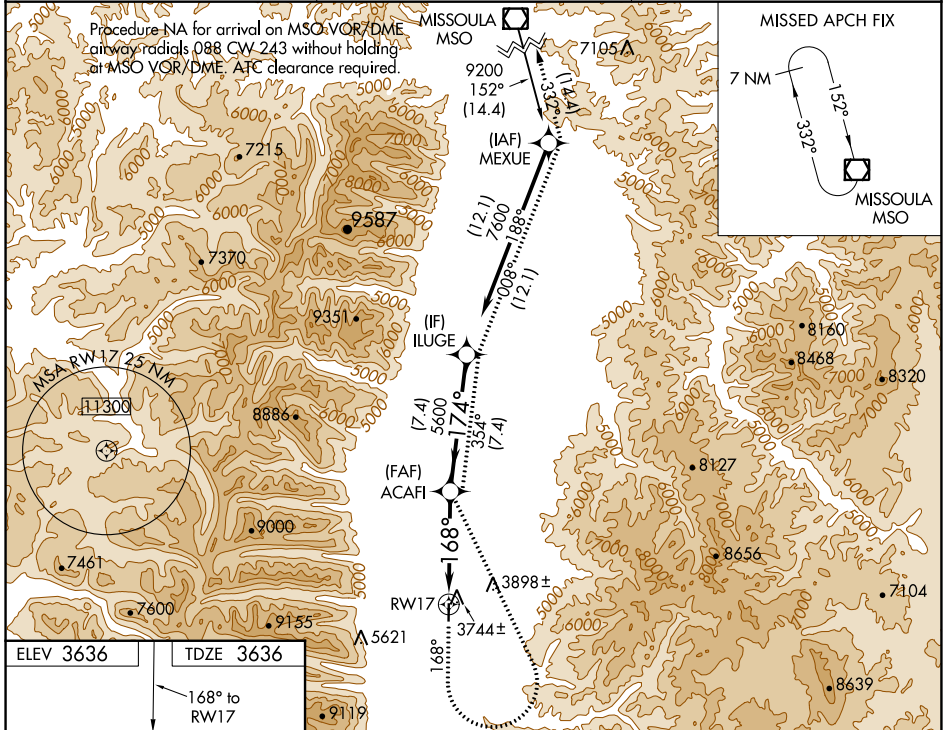
WAAS CH <b>60945</b> <b>W17A</b>	APP CRS <b>168°</b>	Rwy Idg TDZE Apt Elev	<b>5200</b> <b>3636</b> <b>3636</b>
--	------------------------	-----------------------------	---

# RNAV (GPS) RWY 17

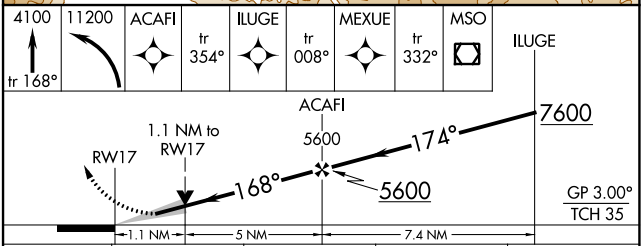
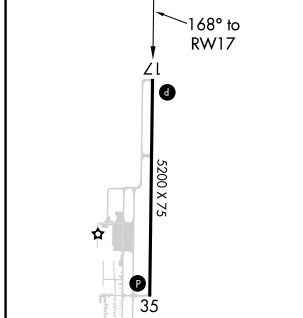
RAVALLI COUNTY (H.R.F.)

RNP APCH-GPS.	MISSED APPROACH: (Do not exceed 130K until ACAFI) Climb to 4100 on 168° then climbing left turn to 11200 direct ACAFI and track 354° to ILUGE and track 008° to MEXUE and track 332° to MISSOULA VOR/DME and hold.
---------------	---

AWOS-3P <b>119.825</b>	SALT LAKE CENTER <b>132.4 338.3</b>	UNICOM <b>122.8 (CTAF) 0</b>
---------------------------	--	---------------------------------



ELEV 3636	TDZE 3636
-----------	-----------



CATEGORY	A	B	C	D
LPV DA	3886-1	250 (300-1)		NA
LNAV/ VNAV DA	3920-1 284 (300-1)	4084-1 3/8 448 (500-1 1/2)		NA
LNAV MDA	4020-1 384 (400-1)	4320-1 684 (700-1)		NA
CIRCLING	4240-1 604 (700-1)	4320-1 684 (700-1)		NA

NW-1, 23 FEB 2023 to 23 MAR 2023

NW-1, 23 FEB 2023 to 23 MAR 2023