

WAAS CH 56444 W32A	APP CRS 321°	Rwy Idg TDZE 284 Apt Elev 284	3095 284 284
--	------------------------	---	---

RNAV (GPS) RWY 32

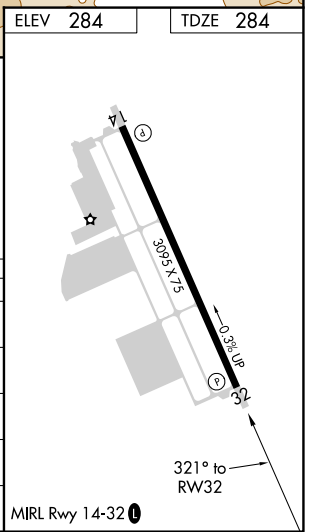
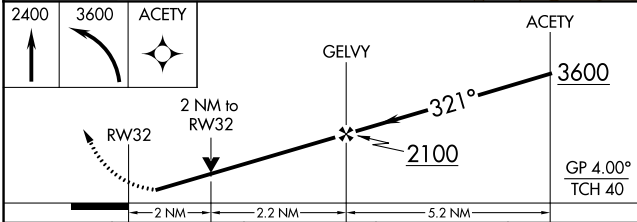
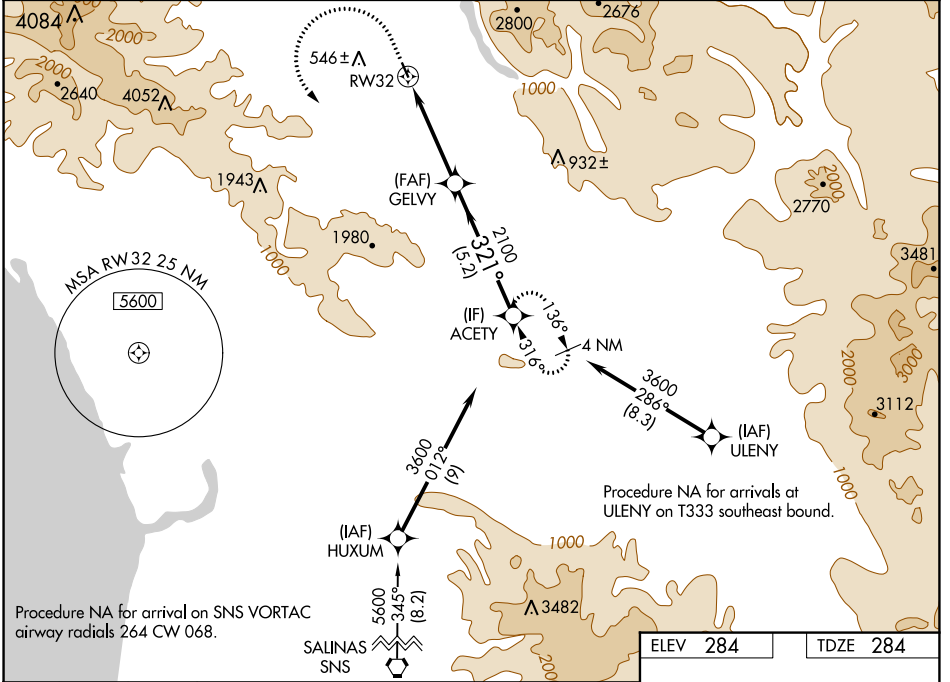
SAN MARTIN (E16)

RNP APCH - GPS.

⚠ Circling NA southwest of Rwy 14-32. Rwy 32 helicopter visibility reduction below $\frac{3}{4}$ SM NA.

MISSED APPROACH: Climb to 2400 then climbing left turn to 3600 direct ACETY and hold.
*Missed approach requires minimum climb of 260 feet per NM to 2400.

AWOS-3P 118.35	NORCAL APP CON 124.525 348.675	UNICOM 122.7 (CTAF) 0
--------------------------	--	---------------------------------



CATEGORY	A	B	C	D
LPV DA*	600- $\frac{7}{8}$	316 (400- $\frac{7}{8}$)		NA
LPV DA	954-1 $\frac{7}{8}$	670 (700-1 $\frac{7}{8}$)		NA
LNAV MDA*	1060-1 776 (800-1)	1060-1 $\frac{1}{4}$ 776 (800-1 $\frac{1}{4}$)		NA
LNAV MDA	1320-1 $\frac{1}{4}$ 1036 (1100-1 $\frac{1}{4}$)	1320-1 $\frac{1}{2}$ 1036 (1100-1 $\frac{1}{2}$)		NA
C CIRCLING	1320-1 $\frac{1}{4}$ 1036 (1100-1 $\frac{1}{4}$)	1320-1 $\frac{1}{2}$ 1036 (1100-1 $\frac{1}{2}$)		NA

SW-2, 23 FEB 2023 to 23 MAR 2023

SW-2, 23 FEB 2023 to 23 MAR 2023