

VORTAC TUL 114.4 Chan 91	APP CRS 060°	Rwy Idg TDZE Apt Elev	N/A N/A 733
--	------------------------	-----------------------------	--

VOR/DME-B

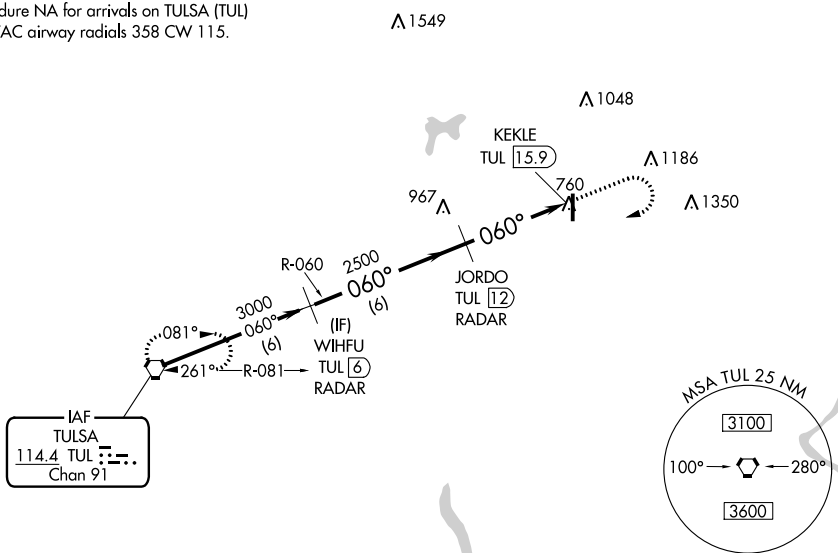
CLAREMORE RGNL (GCM)

▽ If local altimeter setting not received, use Tulsa Intl altimeter setting and increase all MDAs 60 feet.

MISSED APPROACH: Climb to 2500 then climbing right turn to 3000 direct TUL VORTAC and hold.

AWOS-3P 119.925	TULSA APP CON 119.1 360.825	UNICOM 122.7 (CTAF) ①
---------------------------	---------------------------------------	---------------------------------

Procedure NA for arrivals on TULSA (TUL)
VORTAC airway radials 358 CW 115.

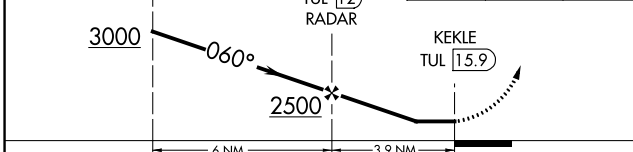


SC-1, 23 FEB 2023 to 23 MAR 2023

SC-1, 23 FEB 2023 to 23 MAR 2023



Procedure Turn NA	WIHFU TUL (6) RADAR	JORDO TUL (12) RADAR	KEKLE TUL (15.9)
-------------------	---------------------	----------------------	------------------



CATEGORY	A	B	C	D
① CIRCLING	1260-1	527 (600-1)	1380-1¾ 647 (700-1¾)	NA

ELEV 733

060° 3.9 NM from FAF

81
0.7% UP
5200 X 75
36

MIRL Rwy 18-36
REIL Rwy 36 ①