

WAAS CH <b>49016</b> <b>W34A</b>	APP CRS <b>346°</b>	Rwy Idg TDZE Apt Elev	<b>6101</b> <b>5012</b> <b>5024</b>
--	------------------------	-----------------------------	---

# RNAV (GPS) RWY 34

MC CALL MUNI (MYL)

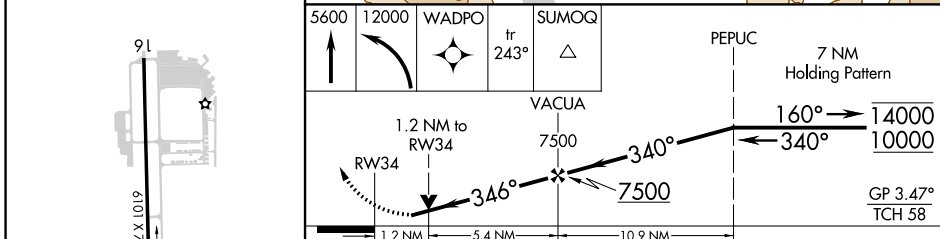
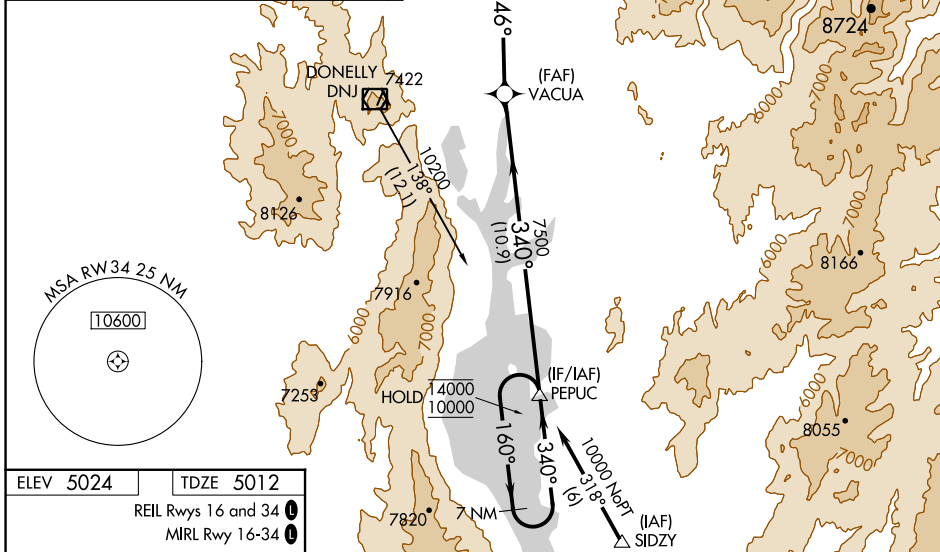
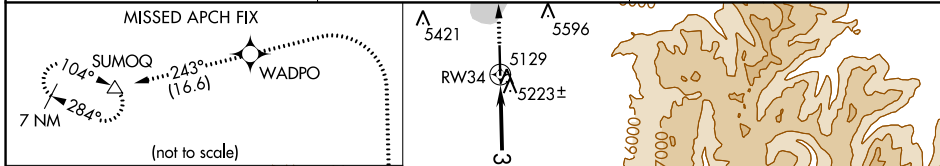
RNP AR APCH - GPS.

For uncompensated Baro-VNAV systems, LNAV/VNAV NA below -24°C or above 40°C. When local altimeter setting not received, procedure NA. Rwy 34 helicopter visibility reduction below 3/4 SM NA. Circling Rwy 16 NA at night.

MISSED APPROACH: Climb to 5600, then climbing left turn to 2000 direct WADPO and on track 243° to SUMOQ and hold, continue climb-in-hold to 12000.

\*Missed approach requires minimum climb of 265 feet per NM to 6380.

ASOS <b>119.925</b>	SALT LAKE CENTER <b>128.05 306.95</b>	UNICOM <b>122.8 (CTAF) 0</b>
------------------------	--	---------------------------------



ELEV 5024	TDZE 5012	REIL Rwy 16 and 34		MIRL Rwy 16-34				
		5600	12000	WADPO	tr 243°	SUMOQ	PEPUC	7 NM Holding Pattern
		1.2 NM to RWY34		VACUA		7500		14000 10000
		1.2 NM		5.4 NM		10.9 NM		GP 3.47° TCH 58
CATEGORY	A	B	C	D				
LPV DA	5375-1				363 (400-1)			
LNAV/VNAV DA	5683-1½				671 (700-1½)			
LNAV MDA*	5520-1		508 (500-1)		5520-1½		508 (500-1½)	
LNAV MDA	5680-1		668 (700-1)		5680-1½		668 (700-1½)	
CIRCLING	5700-1 676 (700-1)		5920-1¼ 896 (900-1¼)		6140-3 1116 (1200-3)		6660-3 1636 (1700-3)	

NW-1, 23 FEB 2023 to 23 MAR 2023

NW-1, 23 FEB 2023 to 23 MAR 2023